

Content

VOLUME 5

President's Report	001
May Meeting Flyer	002
Upcoming Events	003
Donald F. Dickerson Golf Tournament	004
VP Technical Report	006
CADD/Bim Training	012
IAPMO Washingto News	013



President's Report

Vahan Margaryan CPD, GPD President

Hello fellow ASPE LA members,

I hope this message finds you well.

We were pleasantly surprised by the strong interest in our April presentation, "Commercial Restroom Reinvented," delivered by Mr. Tim Schroeder of Kohler. The presentation was highly informative, with Mr. Schroeder offering valuable insights into innovative design approaches. However, the

unexpectedly large turnout did present some logistical challenges.

Our venue staff deserve recognition for their swift response in setting up additional seating to accommodate everyone. Unfortunately, we encountered an issue with the number of meals available. Typically, we order food based on RSVP numbers, with a 10% buffer. This time, however, there was a 50% increase in non-RSVP attendees,

Continued on page 3

AMERICAN SOCIETY OF PLUMBING ENGINEERS, LOS ANGELES CHAPTER

May 14, 2025, Meeting



**Panel discussion by
LADWP Distributed Energy Solutions –
Efficiency Solutions Engineering
Mr. Armen Saiyan P.E.
Mr. Jim Kemper C.I.P.D
Mr. Jorge Centeno P.E.**



A path to the future

WHAT YOU WILL LEARN:

- Building Electrification from a utility perspective.
- Anticipated Grid and Customer Billing Impacts.
- Installation of integrated heat pump water heaters (HPWH) in existing residential buildings for domestic water.
- The impact of electrification ordinance on plumbing systems operations & installations.
- Impact of electric heat pump water heaters and electric appliances on circuit breakers & Service size.
- AB 306 and energy code.
- Ventilation issues with heat pump water heaters.
- Noise issues.
- Who pulls the permit?
- Service & Maintenance.

SPEAKERS:

- **Armen Saiyan P.E.**– Assistant Manager of Efficiency Solutions Engineering
- **Jim Kemper C.I.P.D.**– Mechanical Engineering Associate – Subject Matter Expert for Codes & Standards
- **Jorge Centeno P.E.**– Interim Supervisor of Codes Standards & Ordinances

For more information, visit our website:
www.aspela.com.

Meeting Schedule:

- 4:30 pm – Check in.
- 5:00pm – Facilities tour (First group)
- 5:30pm – Facilities tour (Second group)
- 6:00pm – Dinner served.
- 6:30 pm – 9:00 pm – Presentation and panel discussion

Meeting Location:

In Person;
LADWP La Kretz Innovation Campus
525 South Hewitt Street Los Angeles CA 90013.
Parking is Validated.

Meeting Fee:

LADWP Sponsored event - ASPE members and affiliates are granted complimentary admission.
Limited seating - RSVP required.

RSVP Online: RSVP By: May12, 2025

No entry without RSVP



Upcoming Events

May 14, 2025

ASPE LA Meeting at LADWP La Kretz Innovation Campus

June 20, 2025

Donald F. Dickerson Golf Tournament

August 2025

ASPE LA Product Show and Technical Sessions

September 2025

ASPE LA Fishing Trip

October 2025

ASPE LA Family Picnic

December 13, 2025

2025 Holiday Party

Continued from page 1

resulting in a shortfall.

While we are thrilled to see such enthusiasm and appreciate your commitment to engaging with peers and industry affiliates, it is important that we maintain a positive and well-organized experience at our meetings. We kindly ask that you RSVP in advance to help us plan accordingly.

Registering is simple: visit ASPELA.com, click the “Meetings” button, select the meeting you’d like to attend, and complete your registration. If you encounter any login issues, you may register as a guest. Please note that online payment is not currently available—you’ll need to pay at the door on the day of the meeting. Thank you for your cooperation and understanding.

A reminder: our next ASPE LA meeting will take place on May 14th at the LADWP La Kretz Innovation Campus. Please refer to the event flyer for more details. LADWP has generously offered to host two facility tours. If you plan to participate in a tour, please arrive no later than 5:15 p.m.

Lastly, IAPMO® has launched WDC-Pro, a new web-based tool that enhances the efficiency and accuracy of water pipe sizing for multifamily, high-rise, and residential buildings. Building on the success of the original Water Demand Calculator®—now adopted in 10 states and multiple cities—WDC-Pro significantly streamlines complex calculations. It reduces design time by 50% or more, cuts calculation time for large-scale projects from six hours to just two or three, and helps optimize pipe sizing to lower construction costs and improve water efficiency.

WDC-Pro allows users to input the number and flow rate of each indoor fixture in a residential building. It then estimates the 99th percentile of instantaneous water demand during peak indoor usage. The tool is

Continued on page 8

DONALD F. DICKERSON GOLF TOURNAMENT 61ST ANNIVERSARY LA CHAPTER

Friday June 20, 2025



Brookside Golf & Country Club
1133 Rosemont Ave.
Pasadena, CA 91103 –T: 626-585-3594



**Team Best Ball Format
Shotgun Start @ 8:00am
Check in Begins @ 6:00am**

Sponsorship Opportunities Include:

Registration

Platinum Level: \$5000

- Special Recognition at Monthly ASPE Meetings
- 1-year Platinum Level Sponsor AD in ASPE-LA Website aspela.com
- Banner Recognition
- Three Golf Foursomes
- Ten Hole Sponsor Signs
- Extra Drink Tickets

Gold Level: \$2600

- Special Recognition at Monthly ASPE Meetings
- 1-year Gold Level Sponsor AD in ASPE-LA Website aspela.com
- Banner Recognition
- Two Golf Foursomes
- Six Hole Sponsor Signs
- Extra Drink Tickets

Silver Level: \$1800

- Special Recognition at Monthly ASPE Meetings
- 1-year Silver Level Sponsor AD in ASPE-LA Website aspela.com
- Banner Recognition
- One Golf Foursome
- Four Hole Sponsor Sign
- Extra Drink Tickets

Bronze Level: \$1200

- Special Recognition at Monthly ASPE Meetings
- 1-year Bronze Level sponsor AD in ASPE-LA Website aspela.com
- Banner Recognition
- One Golf Twosome
- Two Hole Sponsor Signs

Breakfast or Lunch: \$825

- Special Recognition at Monthly ASPE Meetings
- Banner Recognition
- Two Hole Sponsor Signs

Beverage Cart: \$550

- Special Recognition at Monthly ASPE Meetings
- Banner Recognition

Entry Fee: \$400 for 2 players (Minimum)

Foursome Discount Rate: \$750

- Golf w/Cart
- Breakfast and Lunch
- Drink Ticket and Prizes

Golf Tabletop Hole Sponsor:
Limited Availability. **First come first serve \$500** (\$400 if combined with any **Level Sponsorship**)

Golf Hole Sponsor:
Includes Signs on Both Courses \$250

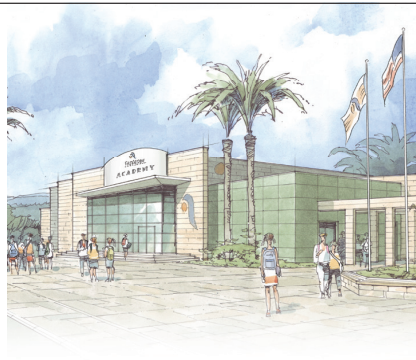
- Custom-designed golf sign/s with your company logo and/or products for all to see. They're yours to keep at the conclusion of the tournament.

All payments must be received no later than Friday, June 4th, 2025!! Receipt of payment is required for registration and/or inclusion in signage. Thank you for your cooperation. Please Note: All advertisements with Sponsorships will begin in our website as soon as sponsor payment is received. Anyone wanting to advertise in the ASPE-LA Newsletter should expect to pay at the beginning of the year.

Contact Name:		If less than a foursome, we will pair you with others.	
Firm Name:		Player Name	Player Company
Address:		1.	
City/St/Zip:		2.	
Phone:		3.	
E-mail:		4.	
Tabletop:		Player Registration Cost:	\$ _____
Make checks Payable to:	ASPE-LA	Sponsorship Cost:	\$ _____
Send form and checks to:	Thura Zin c/o ARUP 900 Wilshire Boulevard 19th Floor, Los Angeles, CA 90017 T: (213) 944-9178	TOTAL ENCLOSED:	\$ _____

NOTE: If paying by credit card, please email your completed form to Thura Zin at vptech.aspela@gmail.com so the payment can be run on the Square Device. Credit Card Number & Type of Card _____ CV# _____ Expiration Date _____, Billing zip code _____.

All proceeds from the tournament will benefit the ASPE Los Angeles Chapter. Reservations will be confirmed by receipt of registration and sponsorship fees.



T&S IS HERE >

T&S is proud to be a trusted name across a wide range of markets — staying at the forefront of today's evolving industry and providing a vast selection of reliable solutions that meet required codes and compliances.

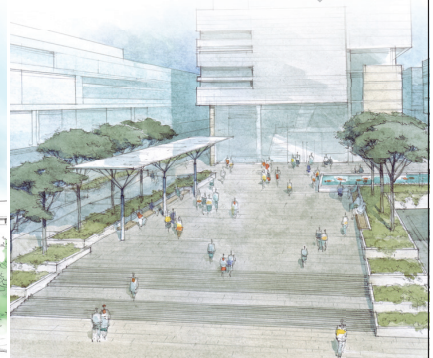
Learn more at tsbrass.com/markets.

EDUCATION

HEALTHCARE

PUBLIC VENUES

COMMERCIAL OFFICES



Find us in



T&S plumbing products reresented in So. Cal. by: **Delco Sales 714-888-2444**

New Representative: Mainline Sales

**One Mission.
One Focus.
No Distractions.**

Emergency equipment isn't just what we do. It's all we do. Your safety is too important to entrust to just anyone. All Guardian emergency eyewash and shower products are inspected, fully assembled, and 100% water-tested in our Chicago facility, which means you receive the most reliable emergency equipment each time, every time. Your safety isn't just a priority. It's our only priority.

Visit gesafety.com to learn more.



Guardian

EMERGENCY EYEWASH & SHOWER TECHNOLOGY



Represented by:
Mainline Sales
(877) 300-9346

Technical Report

BY Thura Zin CPD, GPD

The ASPE-LA monthly meeting was held on April 9, 2025, at the Courtyard in Burbank. On behalf of the ASPE-LA Board of Directors, we extend our sincere thanks to Mr. Tim Schroeder, Business Development Manager at Kohler.

Mr. Schroeder presented “An Introduction to Commercial Restrooms” and shared valuable insights into the trends shaping the future of restroom design. If you would like a copy of his presentation, please contact us.

We had a fantastic turnout, with 51 members and professionals in attendance—thank you to everyone who participated!

Upcoming Meeting – May 14, 2025

Please note: Our May meeting will be held at a new location—LADWP La Kretz Innovation Campus, not the Courtyard in Burbank.

We’re excited to host a Panel Discussion on LADWP’s Distributed Energy Solutions – Efficiency Solutions Engineering, featuring:

Mr. Armen Saiyan, P.E., Assistant Manager of Efficiency Solutions Engineering

Mr. Jim Kemper, Mechanical Engineering Associate – Subject Matter Expert for Codes & Standards

Mr. Jorge Centeno, P.E., Interim Supervisor of Codes, **Continued on page 10**





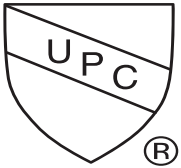
WASTEWATER DIVERSION SYSTEMS, INC.

ON DEMAND POLLUTION SOLUTIONS

On Demand Products for Automatically Diverting and Transferring Wash Water to Sewer and Rainwater to the Storm Drain.

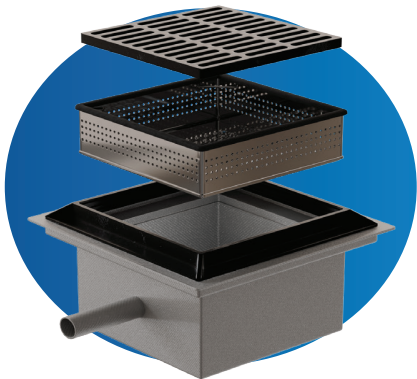


ELECTRICITY NOT NEEDED. ROOF NOT NEEDED.
MADE IN THE USA WITH AMERICAN LABOR, AMERICAN MATERIALS.

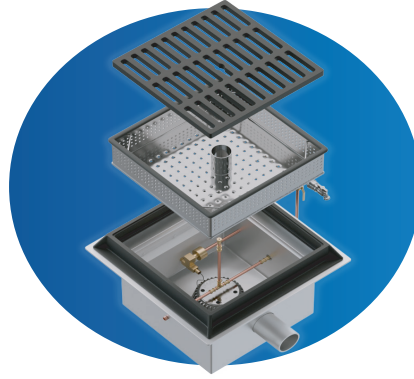


IAPMO IGC 234 2016
File Number 16834

Pits are Hand Crafted Chemical Resistant Fiberglass
Stainless Steel is 304L.
Brass Parts are C89833 Lead Free
Grate & Frames are Cast Iron ADA Compliant.



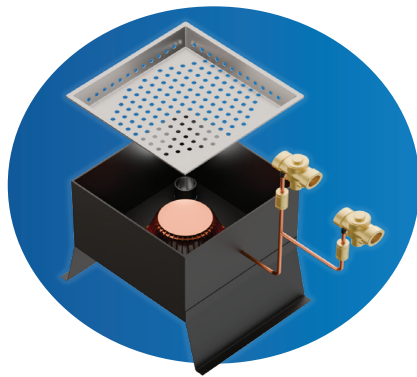
WDS-SSHCC
First Flush Containment Chamber



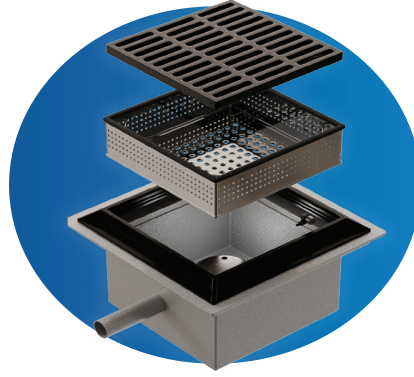
WDS-WDTS4X4CW
Trash Can Wash



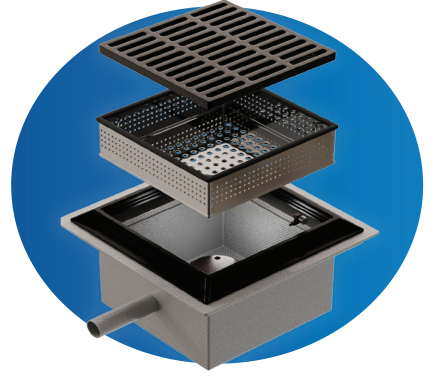
WDS-BDPSWTS
Beach, Deck, Pool Shower



WDS-USDWTS
Undersink Dish Water Transfer



WDS-CES
Chemical Exposure Shower



WDTS4X4
Vehicle & other Wash Down

Wastewater Diversion Systems, INC.
P.O. Box 389, Mechanicsville, VA 23111

Jeff Atlas

Territory Sales Manager

Rinnai America Corporation

103 International Drive | Peachtree City, GA 30269
Toll Free: 1-800-621-9419
Mobile: 661-456-6682 | Tech Support: 1-888-746-6247
E-mail: jatlas@rinnai.us
Website: rinnai.us

Rinnai



1006 Brighton Court
Vacaville, California 95687
www.daybreaktech.com

Brett Barron
SoCal Account Manager
C 714-904-2954
P 707-451-9335
F 707-451-9445

2500 E Imperial Hwy. #201
Brea, CA. 92821-6121
brett@daybreaktech.com
MANUFACTURERS' REPRESENTATIVE



Matthew Farrell

1450 Railroad Street
Corona, CA 92882-6929

WWW.RENCOSALES.COM



office - 800.273.6267
fax - 951.371.3635
fax - ariz/nev - 877.251.2659
cell - 951.339.0153
matthewf@rencosales.com

Continued from Page 3

available via monthly or annual subscription at wdcpro.iapmo.org.

Be well and stay well.

AT LAST – IT’S ARRIVED!

Just what you’ve been waiting for!



Independent third-party performance verification under a US test protocol for a **Physical Water Conditioner** - the alternative to the conventional water softener.

- **AT LOW COST**
(You can't afford not to treat hard water anymore)
- **ZERO PLANT ROOM FOOTPRINT**
(Attaches to the wall or to pipe work)
- **ZERO SERVICING**
(No Salt)
- **ZERO MAINTENANCE**
(Which means it is 100% reliable)
- **WARRANTED FOR 20 YEARS**



Case Study: Panorama Towers, Las Vegas, NV.

Cost to install: **\$55,000** ✓
Savings over conventional softener in year one: **\$168,000** ✓
Estimated 3-year savings: **\$500,000** ✓
Annual Running Costs: **\$200**

Download the Engineer's Specifier Guide from www.aqua-rex.com

Scale Down. Soften Up.



TEST REPORT

5001 E. Philadelphia Street
Ontario, California - USA 91761 - 2816
Ph: 909-472-4100 | Fax: 909-472-4243
<http://www.iapmortl.org>

Report Number: 2536-18001-002
Report Issued: February 26, 2018.
Client: Aqua-Rex
3301 Spring Mountain Road Ste 18
Las Vegas, NV 89102
Project No.: 29225
Contact: Jonny Seccombe

Source of Samples: The samples were shipped to IAPMO R&T Lab from Aqua-Rex, and received in good condition on October 11, 2017.

Date of Testing: October 25, 2017 through December 15, 2017.

Sample Description: Scale Prevention Device; model: Aqua-Rex WK1-E.

Scope of Testing: The purpose of the testing is to determine the efficacy of the Scale Prevention Device per section 5 of IAPMO IGC 335-2018, entitled "Rapid Scaling Test for Scale Prevention Devices".

CONCLUSION: **When tested per Section 5 of IAPMO IGC 335-2018, Aqua-Rex WK1-E reduced scaling by 83% when applied to Las Vegas water heated to 180°F.**

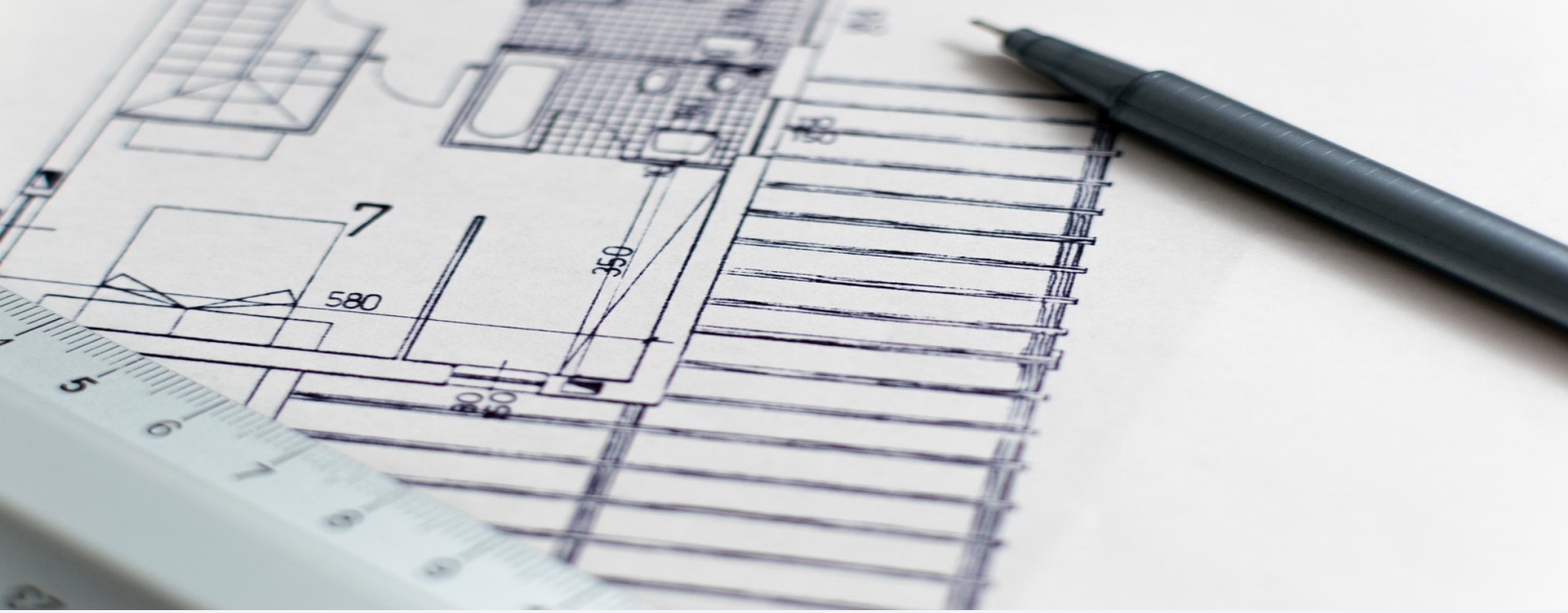
Tested by,

Reviewed by,

Hanks Ninh
Hanks Ninh, Project Engineer

Sean Vuu
Sean Vuu, P.E., Manager, Specialty Projects

 <p>Stainless Steel & Terrazzo Plumbing Fixtures</p>	 <p>Portable, surface, and wall mounted hand washing solutions.</p>	 <p>Thermostatic Mixing Valves & Electronic Tempering Systems.</p>	 <p>Eye Washes, Eye/Face Washes, Emergency Drench Showers, Hoses, & Mixing Valves.</p>
 <p>Vacuum Plumbing Systems for Correctional, Commercial, Water Conservation, and Infection Prevention.</p>	 <p>Polypropylene (PP-R) Pipe for use in pressurized plumbing and mechanical systems of all sizes.</p>	 <p>Refrigeration Copper Press Fitting for VRF Applications.</p>	 <p>Instantaneous Mini Tank & Tankless Electric Water Heater Solutions for Point of Use Applications.</p>
 <p>Energy Efficient Heat Pump Water Heaters for Commercial and Industrial Applications</p>	 <p>Access Panels, Lead Roof Flashings, and Roof Access Hatches.</p>	 <p>Engineered Plumbing & Drainage Products.</p>	 <p>3 PSI Differential Trap Primers, Electronic Trap Primers, Distribution Units, and Water Hammer Arrestors.</p>
 <p>Polypropylene, Polymer Concrete, Stainless Steel, Cast Iron, and Fiberglass Trench Drain Solutions</p>	 <p>Faucets, Tubs, Lavatories, & Accessories for Kitchen and Bathroom Applications.</p>	 <p>Bronze, Brass & Cast Iron Gate, Globe & Check Ball Valves.</p>	 <p>Indoor/Outdoor Drinking Fountains, Water Coolers, Bottle Fillers, & Hand Washing Stations.</p>
 <p>Custom Solutions for Modern Luxury Hospitality and Commercial Restrooms.</p>	 <p>Fire Protection Products.</p>	 <p>Sump, Effluent & Sewage Controls, Engineered Custom Controls, Embedded Controls, Ceramic Filtration Solutions.</p>	 <p>Stainless Steel Surgical Scrub Sinks, Toilets, & Accessories for Health Facilities.</p>



Continued from page 6

Standards & Ordinances

This promises to be an engaging and informative session—don't miss it! Two facility tours will be available. Please check the flyer for tour schedules.

2025 Golf Tournament – June 20, 2025

Our annual ASPE-LA Golf Tournament is scheduled for Friday, June 20, 2025. Sponsorship opportunities are still available. Invite engineers and contractors to join us for a fun day of golf and networking. We'll also have exciting raffle prizes!

Visit our website for:

Sponsorship Details – [Golf Tournament Sponsorship page](#)

Payment Update – Online payments are not yet available but will be soon

Event Flyer – Posted on the ASPE Los Angeles Chapter LinkedIn group and website

Current RSVP status:

(2) Platinum Sponsors

(3) Gold Sponsors

(5) Silver Sponsors

(5) Tabletops

(5) Foursomes

Continued on page 16

1450 Railroad Street
Corona, Ca 92882

**RENCO
SALES**
INC.

MANUFACTURERS REPRESENTATIVE

WWW.RENCOSALES.COM

Phone: 951-371-8848
Fax: 951-371-3635

**ADVANCED
AQUADUCK SYSTEMS**

Rectangular under walk drainage pipe and fittings waterheater pans and duck-pullers

WWW.AQUADUCKSYSTEMS.COM



ABS & PVC fittings, Irrigation, Pool & Spa, Plumbing, Agricultural and many other products.

WWW.DURAPLASTICS.COM

Gastite

Flexible gas corrugated stainless steel tubing, fittings, & accessories

WWW.GASTITE.COM

**FIAT
PRODUCTS**

Specialty products and plumbing fixtures designed for every application, including shower floors, mop basins, pet wash stations and more

WWW.FIATPRODUCTS.COM

JOSAM

A WATTS Brand

Commercial drainage products, stainless steel Push-Fit pipe & fittings, trench drains, stainless steel drains

WWW.JOSAM.COM

GATCO

FINE BATHWARE

High quality designer bathroom towel bars, mirrors, shower curtain rods and countertop accessories

WWW.GATCO-INC.COM

**MATCO
NORCA**

Supplier of globally sourced, code-compliant plumbing & PVF products for use in residential, commercial, & industrial

WWW.MATCO-NORCA.COM

OASIS

Since 1910 Water delivery system, Quasar, bottle filler, drinking fountain, retrofit for competing fillers, outdoor wall mount

WWW.OASISCOOLER.COM

Global Flex Mfg.

Seismic, Stainless steel, bronze & teflon hose assemblies in size ranging from 1/4" to 12" diameter

WWW.GLOBALFLEXMFG.COM



Plumbing specialty in cast brass p-traps, sink & lavatory drain strainers, Pro Wrap ADA, & heavy supply stops

WWW.MCGUIREMFG.COM



Terrazzo mop sinks, shower pans, & outdoor fountains

WWW.STERNWILLIAMS.COM

Commercial, industrial, institutional, food service, electronic, laboratory, & light commercial faucets

**CHICAGO
FAUCETS**

Geberit Group

WWW.CHICAGOFAUCETS.COM

Div 22

Thermostatic mixing valves, Keltech Heaters, Washfountains, Emergency Equipment, Showers, Lavatories, Patient Care, Anti Ligature



A WATTS Brand

Div 10

WWW.BRADLEYCORP.COM

Bathroom Accessories, Partitions Baked Enamel, Phenolic, Euro, Bradmar Plastic, Stainless Steel, Plastic Lockers, Benches and Cubbies



Commercial/Residential wall, roof, & yard hydrants for warm and freezing climates

WWW.WOODFORDMFG.COM



Laboratory service panels, utility controllers & solenoids

WWW.ISIMET.COM



Adjustable nylon based roof supports, Mechanical supports, and tracking

WWW.MAPAPRODUCTS.COM



Complete line of bath wastes, tub trim kits & lavatory drain accessories

WWW.WATCOMFG.COM

STATE-FUNDED CADD/BIM

TRAINING SCHEDULE



Interactive Online Live Instructor

Session 3

CLASS	DAYS	START	END
REVIT MEP	M-W (5:30 to 9:30 pm)	5/21/25	8/13/25
MEETING DATES: *May- 21, 28 *June- 2, 4, 9,11, 16, 18, 23, 25, 30 *July- 2, 7, 9, 14, 16, 21, 23, 28, 30 *August- 4, 6,11, 13, 18			
REVIT ARCHITECTURE	T-TH (5:30 to 9:30 pm)	5/22/25	8/14/25
MEETING DATES: *May- 22, 27, 29 *June- 3, 5, 10, 12,17, 19, 24, 26 *July- 1, 3, 8, 10, 15, 17, 22, 24, 29, 31 *August- 5, 7, 12, 14			
ENHANCED REVIT	T-TH (5:30 to 9:30 pm)	5/22/25	8/14/25
MEETING DATES: *May- 22, 27, 29 *June- 3, 5, 10, 12, 17, 19, 24, 26 *July- 1, 3, 8, 10, 15, 17, 22, 24, 28, 31 *August- 5, 7, 12, 14			
Civil 3D	T-TH (5:30 to 9:30 pm)	5/22/25	8/14/25
MEETING DATES: *May- 22, 27, 29 *June- 3, 5, 10, 12, 17, 19, 24, 26 *July- 1, 3, 8, 10, 15, 17, 22, 24, 28, 31 *August- 5, 7, 12, 14			
Bluebeam	T-TH (5:30 to 8:30 pm)	5/22/25	8/14/25
MEETING DATES: *May- 22, 27, 29 *June- 3, 5, 10, 12, 17, 19, 24, 26 *July- 1, 3, 8, 10, 15, 17, 22, 24, 28, 31 *August- 5, 7, 12			
Advanced AutoCAD *NEW*			
Friday (5:30 to 9:30 pm) Saturday (8 am to 12 pm)		5/23/25	8/23/25
MEETING DATES: *May- 23, 30, 32 *June- 6, 7,13, 14, 20, 21, 27, 28 *July- 11, 12, 18, 19, 25, 26 *August- 1, 2, 8, 9, 15, 16, 22, 23			

For Enrollment, please contact BARRY barry@ach.edu OR barry@westech.edu OR call 949-393-8866, you can also visit us at www.ach.edu and click on **State-Funded Training Program**.



Mike Brown

1450 Railroad Street
Corona, CA 92882-6929

WWW.RENCOSALES.COM

tel - 951.371.8848
fax - 951.371.3635
cell - 951.833.2805

mikeb@rencosales.com



Casey Wise

1450 Railroad Street
Corona, CA 92882-6929

WWW.RENCOSALES.COM

tel - 951.371.8848
fax - 951.371.3635
cell - 951.532.6109

caseyw@rencosales.com



WASHINGTON WEEKLY

Congress Tackles Water and Energy Priorities as Budget Season Kicks Off



Congress returned from spring break this week to a full calendar and budget work. Three notable water-related hearings took place on April 30. A House Energy and Commerce subcommittee discussed 14 energy bills, including transmission, critical minerals, and hydropower. A House Natural Resources subcommittee held a hearing on federal water and hydropower development. The Senate Committee on Environment and Public Works talked about federal water infrastructure funding.

[For More Information Click Here](#)

President Signs New Executive Order to Expand Registered Apprenticeships



On April 23, President Trump issued an executive order to overhaul U.S. workforce development programs and set a goal of 1 million new apprentices annually. The order tasks the Secretaries of Labor, Education, and Commerce with reviewing existing programs and proposing expansion plans within six months. It follows the March 2025 rescission of an executive order which emphasized labor-management collaboration in apprenticeships. The new order notably excludes any requirement to consult labor unions, despite their longstanding involvement in registered apprenticeship programs.

[For More Information Click Here](#)

Continued on page 19

SLOAN®



DRS120 DropSpot Bottle Filler with Bi-level Cooler in Stainless Steel finish.

DropSpot™

Bottle Fillers & Coolers

Ounce for ounce, a better option for hydration.

With our new Bottle Fillers and Coolers you can refill on style, safety, and sustainability, delivering fresh drinking water with every sip.



To learn more visit
sloan.com/dropspot



DRS100 DropSpot Bottle Filler in Stainless Steel finish.



DRS110 DropSpot Bottle Filler with Single-level Cooler in Stainless Steel finish.



UV-C LED WATER TREATMENT EXCLUSIVELY THROUGH OASIS

WHAT'S HIDING IN YOUR WATER?

- **Pathogen Inactivation:** Effective against a wide range of water-borne pathogens by 99.9%, including Legionella, Cryptosporidium, and Giardia
- **Chemical & Mercury Free:** Provides physical treatment of water without the use of harmful chemicals or altering taste
- **Constant Protection:** UV-C LEDs pulse on every 10 minutes to keep the dispense point sanitized
- **Low Power:** UV-C LEDs do not transfer heat to the treated water or waste energy



ACCESSIBILITY

Easy access to filter with just two screws to open bottle filler



UV-C DISINFECTION

Disinfects and treats water at the point of dispense on QUASAR models



EFFICIENT

Filter replacement and/or maintenance can be performed in minutes

NO OTHER BOTTLE FILLER ON THE MARKET TODAY
CAN PROVIDE THIS LEVEL OF PROTECTION.



WE KNOW WATER. / OASIS INTERNATIONAL / 222 East Campus View Blvd., Columbus, OH 43235 / www.oasiscoolers.com / 1-800-646-2747

OASIS is a registered trademark of LVD Acquisition, LLC dba OASIS International, © 2024 LVD Acquisition | AP0147-F-2403

(1) Twosome

Several Golf Hole Sponsors

Sponsorships and foursome spots are still available—don't wait!

2025 Product Show & Technical Seminar – August 13, 2025

Our Product Show & Technical Seminar returns on August 13, 2025!

Location: Quiet Cannon, 901 Via San Clemente, Montebello, CA 90640 (same venue as 2023)

Schedule: Two technical sessions in the morning, product show in the afternoon

Event Leadership: Chaired by myself, with Vahan as Co-Chair

Exhibitors: Outreach to manufacturers and reps will begin soon

Flyer: To be released in May

2025 Fishing Trip – Coming in September

Our ASPE-LA President, Vahan, is chairing this event. Sponsorship opportunities are available. Save the date and

join us for a day of fun and camaraderie!

The registration form and event details will be posted on our website soon.

2025 ASPE Technical Symposium – Orlando, Florida

Mark your calendars! The 2025 ASPE Tech Symposium will be held at the Rosen Centre Hotel in Orlando, Florida. More details to follow—stay tuned.

Get Involved

Do you have suggestions for future technical sessions? Please reach out to any board member with your ideas.

Watch your inbox for future meeting announcements, and don't forget to check our Technical Calendar for upcoming sessions.

Thank you for your continued participation and support. We look forward to seeing you at our events.

Stay safe and take care!





PLUMBING GROUP



Superior Performance & System Reliability

DuRa Pipe™ enhanced epoxy coating applied to cast iron soil pipe and fittings. It is well suited for aggressive DWV applications where greater performance is required.



ABIFoundry.com



Anaco-Husky.com



PIPE & COUPLING

TylerPipe.com



Mainline Sales has over forty years experience as a professional manufacturers' representative firm covering **California, Nevada, Arizona, and Hawaii** :

- Plumbing (Residential & Commercial)
- Mechanical
- Fire Protection
- Industrial
- Irrigation
- Waterworks (Water & Sewer).

Mainline Sales operates **(6)** distribution centers and **(7)** offices strategically located in **Anaheim, San Diego, The Bay, Sacramento, Las Vegas, Phoenix, and Hawaii** which are supported by a seasoned staff of professionals that are dedicated to satisfying the value chain (specifiers, architects, builders, contractors, municipalities and distributors) from the initial specification through the final shipment, and after-market service of installed product.

We believe in delivering superior results for the manufacturers we have the honor of representing, by supporting our strategic relationships with the best people, systems, and analytics.

Anaheim Headquarters
659 E. Ball Road | Anaheim, CA 92805

Customer Care (877) 300-9346
cs@mlsalesinc.com | www.mlsalesinc.com

EPA Administrator Demands Action from Mexico on Tijuana River Sewage Crisis



EPA Administrator Lee Zeldin visited the California-Mexico border on Earth Day to demand urgent action from Mexico to stop decades of raw sewage and toxic waste flowing into the Tijuana River and polluting Southern California's coast. Zeldin toured impacted sites, met with Navy SEALs affected by the contamination, and emphasized the crisis's impact on military readiness and public health. He announced plans to present Mexico with a list of cleanup projects and pledged rapid progress on expanding the U.S. wastewater treatment facility, backed by \$250 million in federal funding. Although EPA recently denied a request to designate the region a Superfund site, Zeldin signaled a more collaborative future with Mexico and local stakeholders.

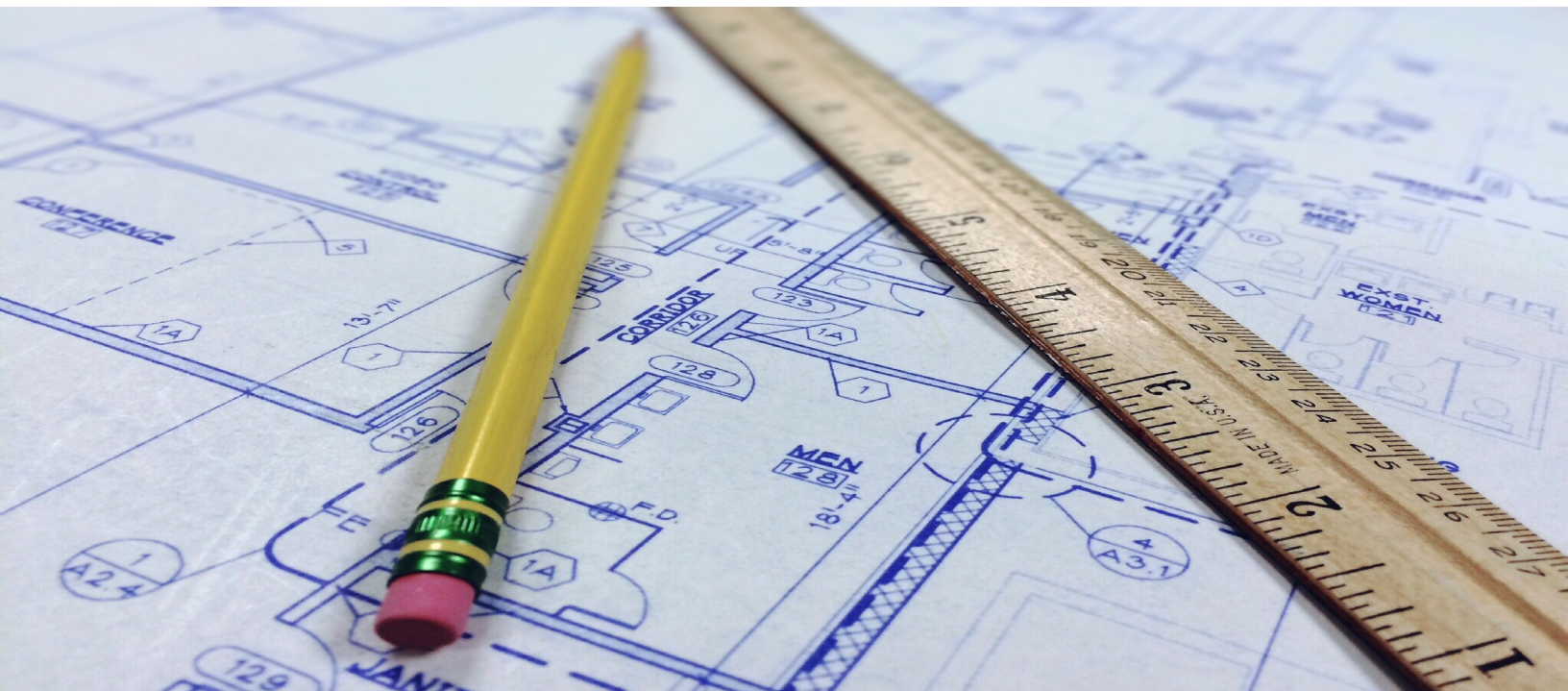
[For More Information Click Here](#)

The Growing Threat to Fire and Life Safety Codes



Across the United States, state legislatures are weakening fire and building safety codes through deregulation, delayed code updates, and preemption laws that prevent local communities from adopting stricter standards. In Ohio, a law requiring agencies to eliminate two regulations for every one added is forcing the fire marshal to gut two-thirds of the state fire code before it can be updated. Officials warn that these actions threaten public safety by sidelining expert input and compromising standards that were created to prevent tragedy.

[For More Information Click Here](#)



Rinnai® REHP SERIES™

Electric Heat Pump Water Heater

Technology and Comfort Combined

Rinnai now offers one of the most efficient and sustainable residential water heating solutions available, the Rinnai Electric Heat Pump Water Heater (REHP). The REHP delivers consistent hot water by extracting heat from the surrounding air and converting it to hot water while producing zero emissions.

When you install the REHP in your home, you are assured of meeting the highest efficiency standards and reduced energy usage and costs.

Product Highlights

Efficiency

- Energy Star® 5.0
- UEF of 3.75/50 GL and 4.0/80 GL
- Meets the highest level of Builder efficiency standards
 - Only Builder model with CTA-2045
 - Title 24 Compliant
- Meets the highest level of federal and state rebate requirements
 - IRA (45L) tax credit eligible
- NEEA Tier 4
- High Cool Climate Efficiency (CCE)

Performance

- Designed with variable speed fan for whisper quiet operation
- Wide Operating Range as low as 37°F - 109°F
- Designed with a Micro Channel Heat Exchanger Condenser to optimize the heat transfer and enhance energy savings for best in class recovery rate
- 4.5 KW back up elements for extra comfort
- Demand-Response Enabled- Save money by reducing energy usage during peak demand

Installation and Serviceability






- Zero Clearance- Gain back net living space with less install footprint for flexible installation
- Installs as easily as an electric water heater
- Easy troubleshooting and serviceability
- Duct ready to install in tight spaces

Rinnai. Learn more at rinnai.us



5 Operating Modes to meet any hot water demand



Part #	Included Accessories	
107000677	T&P Valve	
107000674	Drainage Pipe	
107000678	Drain Valve	
Part #	Optional Accessories	
103000120	EHPWH Ducting Kit	
103000119	EHPWH Leak Sensor Valve	

rinnai.us | rinnai.ca

Rinnai America Corporation | 103 International Drive | Peachtree City, Georgia 30269 | rinnai.us | rinnai.ca | 1-800-621-9419



Rinnai.

SH STEWART-HAAS

TSP INVESTMENT POLICE

PROUD SPONSOR



FOLDS OF HONOR

Official Water Heater of Stewart-Haas Racing and Tony Stewart Racing

2024166

Copyright 2024 Rinnai America Corporation. All rights reserved. Rinnai® and Creating a healthier way of living® are registered trademarks of Rinnai Corporation used under license by Rinnai America Corporation. Rinnai Electric Heat Pump Water Heater™ and Every Detail Matters™ are the trademarks of Rinnai America Corporation. Rinnai America Corporation continually updates materials, and as such, content is subject to change without notice.

2/2024

Your Premier Providers of Life, Property and Asset Protection Solutions

CLEAN AGENT FIRE SUPPRESSION

Our fire protection specialists bring you the finest in fire protection, including the most cost effective to the most environmentally green products available. Fike's **ECARO-25[®]** (using DuPont™ FE-25™ as the fire-extinguishing agent) is the best, most cost-effective clean agent system available. We offer a full line of leading-edge systems for a variety of applications:

- Cost-Effective Clean Agent Systems
- Green Inert Gas Systems
- Drop-in Halon Replacement
- In Cabinet / Small-Space Protection
- CO₂ Systems



FIRE ALARM AND LIFE SAFETY

Our code-compliant fire alarm systems with specialty detection utilize high quality equipment from industry-leading manufacturers. We have extensive experience in projects from small commercial buildings, to large high-rise facilities, to sprawling industrial complexes. Our NICET certified sales team, designers, project managers, and technicians strive to exceed our client expectations.



- Addressable, Conventional, and Networked Fire Alarm Systems
- Voice Evacuation
- Linear Heat Detection
- Air Sampling
- Pre-action Sprinkler Detection & Control



EMERGENCY POWER SHUTDOWN MANAGEMENT SYSTEM (EPSMS)

Fike's Emergency Power Shutdown Management System (EPSMS) is designed to consolidate and control equipment emergency power off in a timely, efficient and coordinated manner. EPSMS is used in many applications to:

- De-energize equipment during a fire
- Close fire dampers and turn off HVAC to contain fire and maintain proper concentration of fire suppressant
- Safely shutdown equipment during a flood or sprinkler system discharge
- Help protect fire department personnel from electrocution when fighting a fire



Call today for your life safety evaluation.



FACILITIES PROTECTION SYSTEMS

714-257-2244

www.fpsys.com



925-484-3701

www.gotoitsi.com

American Society of Plumbing Engineers

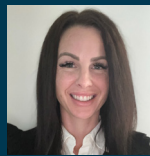
Officers - Board of Directors

Published by American Society of Plumbing Engineers, Los Angeles Chapter
www.aspela.com // news.aspela.com

Over fifty years of dedication to the health and safety of the Southern California Community.
A non-profit corporation. Local chapters do not speak for the society.



President
VAHAN MARGARYAN, CPD,
GPD
ARUP
(310) 422-7425
vahan.margaryan@arup.com



Corresponding Secretary
CASEY WISE
Renco Sales, Inc.
(951)532-6109
caseyw@rencosales.com



Editor
MATT FARRELL
Renco Sales, Inc.
(951)339-0153
news.aspela@gmail.com



Vice President Technical
THURA ZIN CPD, GPD
ARUP
(310) 650-7734
thurazin53@gmail.com



Treasurer
EDGAR OCHOA
Southcoast Engineering
Group
(818) 224-2700
eochoa@sceginco.com



Women of ASPE Region 4
Liaison
LINDA DEUNAY
Enviro Products West
(818) 687-6910
linda@epwest.com



Vice President Legislative
AMIR TABAKH
LADWP
amir.tabakh@ladwp.com



Administrative Secretary
JEFF ATLAS
Rinnai
(661) 478-4565
aspeneews@gmail.com



Chapter Affiliate Liaison:
GUILLERMO NEGRON
Lixil
giullermo.negron@lixil.com



Vice President Membership
GABRIEL STARKMAN
DeltaQ
gabriel@deltaqinc.com



Chairman Board of
Governors
COREY NAKANISHI
PBS Engineers, Inc.
cnakanishi@pbsengineers.com