

## Content

## VOLUME 3

President's Report	001
March Meeting Flyer	002
Upcoming Events	003
Donald F. Dickerson Golf Tournament	004
VP Technical Report	006
Shoot 4 Scouts	011
IAPMO Washingto News	013



## President's Report

Vahan Margaryan CPD, GPD President

Hello, fellow ASPE LA members,

I hope you are all doing well.

I would like to begin my report with a note of appreciation for our current ASPE LA Chapter Board of Directors. Their commitment and dedication to supporting ASPE LA and elevating its external exposure are truly commendable.

During the Board of Directors meeting on February 12th, we discussed several important topics. I would like to share a couple of them with you:

ASPE LA Monthly Meeting Attendance – While we have seen a significant increase in in-person attendance, we are still slightly below our pre-COVID numbers. At this point, we would like to hear from members who are still hesitant to join us in person.

Please share with us what is preventing you from

Continued on page 3

**AMERICAN SOCIETY OF PLUMBING ENGINEERS LOS ANGELES CHAPTER**

**March 12, 2025, Meeting  
“2024 UPC Key Provisions”  
By Mr. Enrique Gonzalez**

**Staff Liaison for the Uniform Plumbing Code/Manager of Codes Development  
International Association of Plumbing and Mechanical Officials**

**WHAT YOU WILL LEARN:**

The presentation will cover the following topics, with time for questions:

- Overview of the 2024 UPC
- Important Changes
- New to the 2024 edition

**MEETING LOCATION:**

In Person:

*COURTYARD BY MARRIOTT BURBANK  
2100 W EMPIRE AVE, BURBANK, CALIFORNIA 91504*

**MEETING SCHEDULE:**

5:30 pm – Check in

6:30 pm – 7:30 pm – Presentation

**COST: Pay at door only**

Meeting Fee:

RSVP - \$55 and Retired BOD: \$30

Without RSVP - \$60

**RSVP Online:**

[RSVP](#)

**By: March 7, 2025**

**THE SPEAKER:**



Enrique Gonzalez is the Manager of Code Development for the International Association of Plumbing and Mechanical Officials (IAPMO). In his role at IAPMO, Enrique manages the development process of the IAPMO/ANSI UPC, IAPMO/ANSI UMC, IAPMO/ANSI USPSHTC, IAPMO/ANSI USHGC, and IAPMO/ANSI WE-Stand codes. Enrique also serves as the Liaison for the development of IAPMO/ANSI UPC and IAPMO/ANSI USPSHTC. Enrique is a voting member of the NFPA 54 (National Fuel Gas Code) Technical Committee. Enrique has a Bachelor’s Degree in Mechanical Engineering with a minor in Materials Engineering and is a certified Engineer in Training (EIT) for the State of California. Enrique is also a certified Plumbing Inspector and Plumbing Plans Examiner.

If you have additional questions or needed information on his presentation, you can reach him at: [Enrique.Gonzalez@iapmo.org](mailto:Enrique.Gonzalez@iapmo.org)

For more information, visit our website:

[www.aspela.com](http://www.aspela.com) or IAPMO’s:

<https://iapmo.org/codes-standards-development/code-development>



## Upcoming Events

### May 14, 2025

ASPE LA Meeting at LADWP La Kretz Innovation Campus

### June 20, 2025

Donald F. Dickerson Golf Tournament

### August 2025

ASPE LA Product Show and Technical Sessions

### September 2025

ASPE LA Fishing Trip

### October 2025

ASPE LA Family Picnic

### December 13, 2025

2025 Holiday Party

Continued from page 1

attending the meetings. Is it the location, commute, selected date or time, food, or presentation topics? Let us know what changes would encourage you to participate. Don't hesitate to send an email with your recommendations to me, Thura, or any board member. You can also share your suggestions with our active affiliates and manufacturer representatives—they have agreed to relay your feedback to us.

ASPE LA Picnic – We are aiming to host our annual picnic on October 11, 2025. While many participants last year enjoyed Robert Gross Park in Burbank for its cozy atmosphere, uncrowded space, large playground, baseball field, and ample parking, attendance was lower than expected. Therefore, we are reaching out for park recommendations. Please keep in mind that parks get booked quickly, so submit your recommendations by April. Otherwise, we will proceed with Robert Gross Park again.

During our February meeting, Terrese Tuchscher from Oatey delivered an excellent presentation on the pros and cons of shower linear drain installation. Delco Sales conveniently provided a tabletop display with samples of QuickDrain products, including various grates, drain bodies, waterproofing materials, and all other elements necessary for proper installation. This hands-on display enhanced the presentation. Thank you, Terrese, for a great presentation, and thank you, Adam Hausman, for guiding us through the selection options.

The 2025 Certified in Plumbing Design (CPD) exam will be held via remote proctoring from April 7–18, and registration is now open for eligible candidates on ASPE Education.

A quick reminder: If you are considering taking the CPD exam this year or in the future, ASPE is offering a virtual workshop in March to help you prepare. This workshop will take place over six days: March 4, 6, 11,

Continued on page 8

# DONALD F. DICKERSON GOLF TOURNAMENT 61<sup>ST</sup> ANNIVERSARY LA CHAPTER

Friday June 20, 2025



Brookside Golf & Country Club  
1133 Rosemont Ave.  
Pasadena, CA 91103 –T: 626-585-3594



**Team Best Ball Format  
Shotgun Start @ 8:00am  
Check in Begins @ 6:00am**

**Sponsorship Opportunities Include:**

**Registration**

**Platinum Level:** \$5000

- Special Recognition at Monthly ASPE Meetings
- 1-year Platinum Level Sponsor AD in ASPE-LA Website [aspela.com](http://aspela.com)
- Banner Recognition
- Three Golf Foursomes
- Ten Hole Sponsor Signs
- Extra Drink Tickets

**Gold Level:** \$2600

- Special Recognition at Monthly ASPE Meetings
- 1-year Gold Level Sponsor AD in ASPE-LA Website [aspela.com](http://aspela.com)
- Banner Recognition
- Two Golf Foursomes
- Six Hole Sponsor Signs
- Extra Drink Tickets

**Silver Level:** \$1800

- Special Recognition at Monthly ASPE Meetings
- 1-year Silver Level Sponsor AD in ASPE-LA Website [aspela.com](http://aspela.com)
- Banner Recognition
- One Golf Foursome
- Four Hole Sponsor Sign
- Extra Drink Tickets

**Bronze Level:** \$1200

- Special Recognition at Monthly ASPE Meetings
- 1-year Bronze Level sponsor AD in ASPE-LA Website [aspela.com](http://aspela.com)
- Banner Recognition
- One Golf Twosome
- Two Hole Sponsor Signs

**Breakfast or Lunch:** \$825

- Special Recognition at Monthly ASPE Meetings
- Banner Recognition
- Two Hole Sponsor Signs

**Beverage Cart:** \$550

- Special Recognition at Monthly ASPE Meetings
- Banner Recognition

Entry Fee: \$400 for 2 players (Minimum)

Foursome Discount Rate: \$750

- Golf w/Cart
- Breakfast and Lunch
- Drink Ticket and Prizes

**Golf Tabletop Hole Sponsor:**  
Limited Availability. **First come first serve \$500** (\$400 if combined with any **Level** Sponsorship)

**Golf Hole Sponsor:**  
Includes Signs on Both Courses \$250

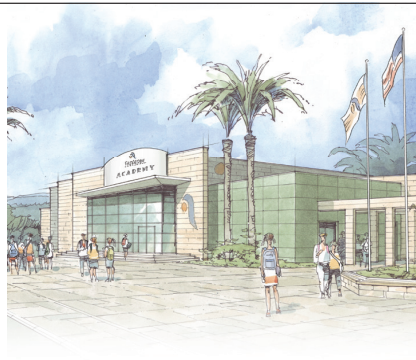
- Custom-designed golf sign/s with your company logo and/or products for all to see. They're yours to keep at the conclusion of the tournament.

**All payments must be received no later than Friday, June 4<sup>th</sup>, 2025!! Receipt of payment is required for registration and/or inclusion in signage. Thank you for your cooperation. Please Note: All advertisements with Sponsorships will begin in our website as soon as sponsor payment is received. Anyone wanting to advertise in the ASPE-LA Newsletter should expect to pay at the beginning of the year.**

<b>Contact Name:</b>		<b>If less than a foursome, we will pair you with others.</b>	
<b>Firm Name:</b>		<b>Player Name</b>	<b>Player Company</b>
<b>Address:</b>		1.	
<b>City/St/Zip:</b>		2.	
<b>Phone:</b>		3.	
<b>E-mail:</b>		4.	
<b>Tabletop:</b>		<b>Player Registration Cost:</b>	\$ _____
<b>Make checks Payable to:</b>	<b>ASPE-LA</b>	<b>Sponsorship Cost:</b>	\$ _____
<b>Send form and checks to:</b>	Thura Zin c/o ARUP 900 Wilshire Boulevard 19 <sup>th</sup> Floor, Los Angeles, CA 90017 T: (213) 944-9178	<b>TOTAL ENCLOSED:</b>	\$ _____

**NOTE: If paying by credit card, please email your completed form to Thura Zin at [vptech.aspela@gmail.com](mailto:vptech.aspela@gmail.com) so the payment can be run on the Square Device. Credit Card Number & Type of Card \_\_\_\_\_ CV# \_\_\_\_\_ Expiration Date \_\_\_\_\_, Billing zip code \_\_\_\_\_.**

**All proceeds from the tournament will benefit the ASPE Los Angeles Chapter. Reservations will be confirmed by receipt of registration and sponsorship fees.**



## T&S IS HERE >

T&S is proud to be a trusted name across a wide range of markets — staying at the forefront of today's evolving industry and providing a vast selection of reliable solutions that meet required codes and compliances.

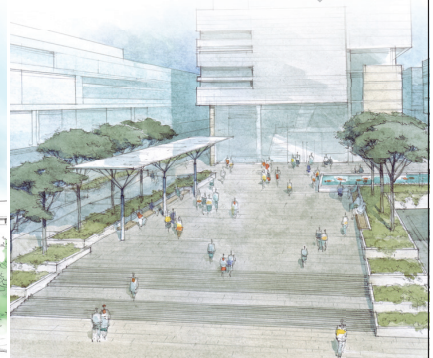
Learn more at [tsbrass.com/markets](http://tsbrass.com/markets).

EDUCATION

HEALTHCARE

PUBLIC VENUES

COMMERCIAL OFFICES



Find us in



T&S plumbing products reresented in So. Cal. by: **Delco Sales 714-888-2444**

## New Representative: Mainline Sales

**One Mission.  
One Focus.  
No Distractions.**

**Emergency equipment isn't just what we do. It's all we do.** Your safety is too important to entrust to just anyone. All Guardian emergency eyewash and shower products are inspected, fully assembled, and 100% water-tested in our Chicago facility, which means you receive the most reliable emergency equipment each time, every time. Your safety isn't just a priority. It's our only priority.

Visit [gesafety.com](http://gesafety.com) to learn more.



**Guardian**

EMERGENCY EYEWASH & SHOWER TECHNOLOGY



Represented by:  
**Mainline Sales**  
(877) 300-9346

**KIMAX® Glass Drain and Vent Systems**

**Sustainable**  
Low VOC's, no offgassing

**Durable**  
Maximum corrosion resistance

**Flexible**  
Easy to install

**Economical**  
Lowest life-cycle costs

**BIM**  
BIM Objects available

Your Local Distributor  
**The George Yardley Company**  
1-714-241-7700  
rob@georgeyardley.com

**SCHOTT North America, Inc.**  
info.drainline@us.schott.com  
us.schott.com/drainline

**SCHOTT**  
glass made of ideas

# Technical Report

BY Thura Zin CPD, GPD

The ASPE-LA monthly meeting was held on February 12, 2025, at the Courtyard, Burbank. On behalf of the ASPE-LA Board of Directors, we would like to thank Ms. Terrese Tuchscher, Manager of Commercial Sales West at Oatey.

In her presentation, Ms. Tuchscher covered universal design principles for showers, including curbless shower design and more. If you would like a copy of her presentation and reference materials, please contact Ms. Terrese at [ttuchscher@oatey.com](mailto:ttuchscher@oatey.com).

We had 37 members in attendance at the February meeting. Thank you to everyone who joined us!

Looking ahead, our March 12, 2025, meeting will

feature Mr. Enrique Gonzalez, Staff Liaison for the Uniform Plumbing Code and Manager of Codes Development at IAPMO. He will present on the key provisions of the 2024 UPC. This is sure to be another interesting topic, covering an overview of the 2024 UPC, important changes, and what's new in the Uniform Plumbing Code. We hope you can join us!

We're also excited to announce that our golf tournament flyer is now available on our website: <https://aspela.com/meetinginfo.php?id=14&ts=1740966080>.

Registration is open there, and the flyer will also be available on the ASPE Los Angeles Chapter LinkedIn page:

**Continued on page 10**



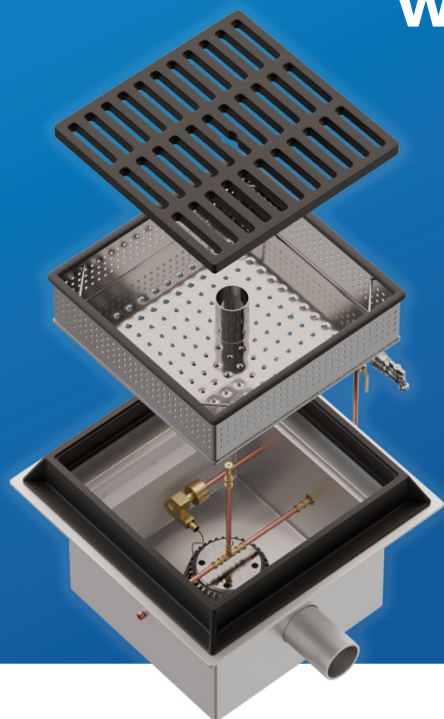


# WASTEWATER DIVERSION SYSTEMS, INC.

## WDS ON DEMAND

Over 45 years Experience | 100% American-Owned and Operated

### WDS DEMAND DRIVEN WASH DOWN WITH CAN WASH



Trash can washout is no longer a polluting problem. Simply place the inverted trash can on the cast iron grate, turn on the water and like a flash, the trash can is clean.

The wash area is also clean because the pit-mounted transfer valve automatically opens with water use, transferring contaminated wash water to the sewer.

Stormwater goes to the storm drain when the transfer valve is closed.



### Model WDS-WDTS4X4CW

Suitable for but not limited to the following uses:

Airport Wash Sites, Container Wash Bays, Dog Kennels and Dog Parks, Emergency, Pool, Deck and Beach Showers, Fast Food, and all Trash Bin Locations, Fire Truck Wash Down, Trash Can Wash Down, Loading Docks, Marinas, Military Equipment Wash Pads, Rental Car Locations, Schools Food and Trash Bin Areas and other Unroofed Wash Pads.

Specs and drawings available at [eeeusa.net](http://eeeusa.net)



Made in AMERICA



## Jeff Atlas

Territory Sales Manager

**Rinnai America Corporation**  
 103 International Drive | Peachtree City, GA 30269  
 Toll Free: 1-800-621-9419  
 Mobile: 661-456-6682 | Tech Support: 1-888-746-6247  
 E-mail: jatlas@rinnai.us  
 Website: rinnai.us

**Rinnai**



1006 Brighton Court  
 Vacaville, California 95687  
 www.daybreaktech.com

**Brett Barron**  
 SoCal Account Manager  
**C** 714-904-2954  
**P** 707-451-9335  
**F** 707-451-9445

2500 E Imperial Hwy. #201  
 Brea, CA. 92821-6121  
 brett@daybreaktech.com  
**MANUFACTURERS' REPRESENTATIVE**



## Matthew Farrell

1450 Railroad Street  
 Corona, CA 92882-6929  
 WWW.RENCOSALES.COM



office - 800.273.6267  
 fax - 951.371.3635  
 fax - ariz/nev - 877.251.2659  
 cell - 951.339.0153  
 matthewf@rencosales.com

### Continued from page 3

13, 25, and 27, from 5-7 p.m. CDT each day. The cost is \$300 for ASPE members and \$500 for non-members, and registration is available on the ASPE Education website: ASPE Education: CPD Review Classes.

Be well, stay well.

# AT LAST - IT'S ARRIVED!

## Just what you've been waiting for!



Independent third-party performance verification under a US test protocol for a **Physical Water Conditioner** - the alternative to the conventional water softener.

- **AT LOW COST**  
(You can't afford not to treat hard water anymore)
- **ZERO PLANT ROOM FOOTPRINT**  
(Attaches to the wall or to pipe work)
- **ZERO SERVICING**  
(No Salt)
- **ZERO MAINTENANCE**  
(Which means it is 100% reliable)
- **WARRANTED FOR 20 YEARS**



### Case Study: Panorama Towers, Las Vegas, NV.

Cost to install: **\$55,000** ✓  
 Savings over conventional softener in year one: **\$168,000** ✓  
 Estimated 3-year savings: **\$500,000** ✓  
 Annual Running Costs: **\$200**

Download the Engineer's Specifier Guide from [www.aqua-rex.com](http://www.aqua-rex.com)

Scale Down. Soften Up.

aqua-rex.com 877-640-2170  
**AQUAREX**



### TEST REPORT

5001 E. Philadelphia Street  
 Ontario, California - USA 91761 - 2816  
 Ph: 909-472-4100 | Fax: 909-472-4243  
<http://www.iapmortl.org>

Report Number: 2536-18001-002 Project No.: 29225  
 Report Issued: February 26, 2018.  
 Client: Aqua-Rex  
 3301 Spring Mountain Road Ste 18  
 Las Vegas, NV 89102 Contact: Jonny Seccombe  
 Source of Samples: The samples were shipped to IAPMO R&T Lab from Aqua-Rex, and received in good condition on October 11, 2017.  
 Date of Testing: October 25, 2017 through December 15, 2017.  
 Sample Description: Scale Prevention Device; model: Aqua-Rex WK1-E.  
 Scope of Testing: The purpose of the testing is to determine the efficacy of the Scale Prevention Device per section 5 of IAPMO IGC 335-2018, entitled "Rapid Scaling Test for Scale Prevention Devices".  
**CONCLUSION:** When tested per Section 5 of IAPMO IGC 335-2018, Aqua-Rex WK1-E reduced scaling by 83% when applied to Las Vegas water heated to 180°F.

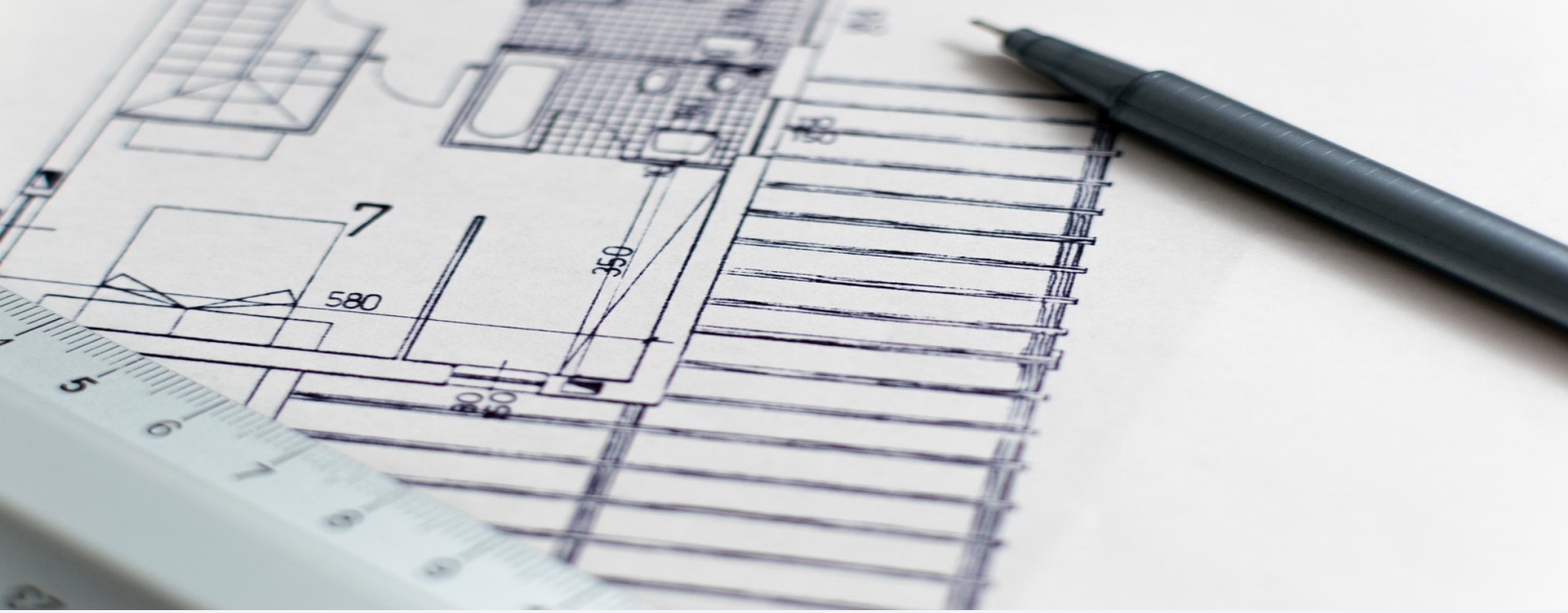
Tested by,

Reviewed by,

*Hank Ninh*  
 Hanks Ninh, Project Engineer

*Sean Vuu*  
 Sean Vuu, P.E., Manager, Specialty Projects

 <p>Stainless Steel &amp; Terrazzo Plumbing Fixtures</p>	 <p>Portable, surface, and wall mounted hand washing solutions.</p>	 <p>Thermostatic Mixing Valves &amp; Electronic Tempering Systems.</p>	 <p>Eye Washes, Eye/Face Washes, Emergency Drench Showers, Hoses, &amp; Mixing Valves.</p>
 <p>Vacuum Plumbing Systems for Correctional, Commercial, Water Conservation, and Infection Prevention.</p>	 <p>Polypropylene (PP-R) Pipe for use in pressurized plumbing and mechanical systems of all sizes.</p>	 <p>Refrigeration Copper Press Fitting for VRF Applications.</p>	 <p>Instantaneous Mini Tank &amp; Tankless Electric Water Heater Solutions for Point of Use Applications.</p>
 <p>Energy Efficient Heat Pump Water Heaters for Commercial and Industrial Applications</p>	 <p>Access Panels, Lead Roof Flashings, and Roof Access Hatches.</p>	 <p>Engineered Plumbing &amp; Drainage Products.</p>	 <p>3 PSI Differential Trap Primers, Electronic Trap Primers, Distribution Units, and Water Hammer Arrestors.</p>
 <p>Polypropylene, Polymer Concrete, Stainless Steel, Cast Iron, and Fiberglass Trench Drain Solutions</p>	 <p>Faucets, Tubs, Lavatories, &amp; Accessories for Kitchen and Bathroom Applications.</p>	 <p>Bronze, Brass &amp; Cast Iron Gate, Globe &amp; Check Ball Valves.</p>	 <p>Indoor/Outdoor Drinking Fountains, Water Coolers, Bottle Fillers, &amp; Hand Washing Stations.</p>
 <p>Custom Solutions for Modern Luxury Hospitality and Commercial Restrooms.</p>	 <p>Fire Protection Products.</p>	 <p>Sump, Effluent &amp; Sewage Controls, Engineered Custom Controls, Embedded Controls, Ceramic Filtration Solutions.</p>	 <p>Stainless Steel Surgical Scrub Sinks, Toilets, &amp; Accessories for Health Facilities.</p>



**Continued from page 5**

<https://www.linkedin.com/groups/13887960>.

The Golf Tournament will be held on Friday, June 20, 2025. Sponsorship opportunities are available. Save the date, and invite your engineer and contractor colleagues to come out and play!

Another exciting event this year is our LA Chapter Product Show, taking place on August 13. We are planning two technical sessions in the morning, followed by the product show after lunch. I will be chairing this year's show.

Manufacturers' sales representatives who are interested in participating, please contact me or any board member for booth layouts and exhibitor registration details. We will have 54 booths available, and they are expected to fill up quickly!

If you are interested in volunteering for this event, please let me know. Save the date, and we look forward to seeing you at this and all of our exciting upcoming events! For those attending technical sessions, please check our website — we will post a registration form as soon as possible.

Lastly, don't forget about the 2025 ASPE Tech Symposium, a 2.5-day conference being held at the Rosen Centre Hotel in Orlando, Florida. Registration will open in the spring, so please save the dates and plan to

attend. We hope to see you there!

As always, please feel free to email any board member if you have topics you'd like to see covered in our technical programs. Watch your email for the next meeting details, and we hope to see you all there. Don't forget to check our Technical Calendar for upcoming sessions.

Take care of yourselves and each other. Stay safe!



1450 Railroad Street

Corona, Ca 92882

**RENCO  
SALES**  
INC.

MANUFACTURERS REPRESENTATIVE

WWW.RENCOSALES.COM

Phone: 951-371-8848

Fax: 951-371-3635

**ADVANCED  
AQUADUCK SYSTEMS**

Rectangular under walk drainage pipe and fittings waterheater pans and duck-pullers

WWW.AQUADUCKSYSTEMS.COM



ABS & PVC fittings, Irrigation, Pool & Spa, Plumbing, Agricultural and many other products.

WWW.DURAPLASTICS.COM

**Gastite**

Flexible gas corrugated stainless steel tubing, fittings, & accessories

WWW.GASTITE.COM

**FIAT  
PRODUCTS**

Specialty products and plumbing fixtures designed for every application, including shower floors, mop basins, pet wash stations and more

WWW.FIATPRODUCTS.COM

**JOSAM**

A WATTS Brand

Commercial drainage products, stainless steel Push-Fit pipe & fittings, trench drains, stainless steel drains

WWW.JOSAM.COM

**GATCO**

FINE BATHWARE

High quality designer bathroom towel bars, mirrors, shower curtain rods and countertop accessories

WWW.GATCO-INC.COM

**MATCO  
NORCA**

Supplier of globally sourced, code-compliant plumbing & PVF products for use in residential, commercial, & industrial

WWW.MATCO-NORCA.COM

**OASIS**

Since 1910 Water delivery system, Quasar, bottle filler, drinking fountain, retrofit for competing fillers, outdoor wall mount

WWW.OASISCOOLER.COM

**Global Flex Mfg.**

Seismic, Stainless steel, bronze & teflon hose assemblies in size ranging from 1/4" to 12" diameter

WWW.GLOBALFLEXMFG.COM



Plumbing specialty in cast brass p-traps, sink & lavatory drain strainers, Pro Wrap ADA, & heavy supply stops

WWW.MCGUIREMFG.COM



Terrazzo mop sinks, shower pans, & outdoor fountains

WWW.STERNWILLIAMS.COM

Commercial, industrial, institutional, food service, electronic, laboratory, & light commercial faucets

**CHICAGO  
FAUCETS**

Geberit Group

WWW.CHICAGOFAUCETS.COM

**Div 22**

Thermostatic mixing valves, Keltech Heaters, Washfountains, Emergency Equipment, Showers, Lavatories, Patient Care, Anti Ligature



A WATTS Brand

**Div 10**

WWW.BRADLEYCORP.COM

Bathroom Accessories, Partitions Baked Enamel, Phenolic, Euro, Bradmar Plastic, Stainless Steel, Plastic Lockers, Benches and Cubbies



Commercial/Residential wall, roof, & yard hydrants for warm and freezing climates

WWW.WOODFORDMFG.COM



Laboratory service panels, utility controllers & solenoids

WWW.ISIMET.COM



Adjustable nylon based roof supports, Mechanical supports, and tracking

WWW.MAPAPRODUCTS.COM



Complete line of bath wastes, tub trim kits & lavatory drain accessories

WWW.WATCOMFG.COM

# SHOOT 4 SCOUTS

*BENEFITING TROOP 209 BURBANK*

**SAT, MARCH 22, 2025**

**THIS EVENT IS HOSTED BY**

**\$160**  
PER PERSON



**ENTRY FEE INCLUDES**

**NSCA REGISTERED**

100 CLAYS, 100 SHOT SHELLS  
(AMMO) BBQ LUNCH, EAR & EYE  
PROTECTION, LOANER SHOTGUNS  
ARE AVAILABLE IF NEEDED. WE'LL EVEN  
THROW IN A GREAT TIME!



## RAFFLE DRAWING

**BERETTA A400 SEMI-AUTO  
SHOTGUN SPORTING CLAYS  
LESSONS SHOOTING  
ACCESSORIES AND CLOTHING**

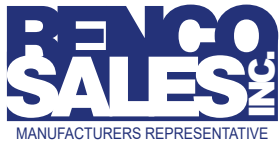


Scan me!

**SIGN UP NOW!**

**MOORENMOORE.COM/SHOOT-4-SCOUTS**





**Mike Brown**

1450 Railroad Street  
Corona, CA 92882-6929

WWW.RENCOSALES.COM

tel - 951.371.8848  
fax - 951.371.3635  
cell - 951.833.2805

mikeb@rencosales.com



**Casey Wise**

1450 Railroad Street  
Corona, CA 92882-6929

WWW.RENCOSALES.COM

tel - 951.371.8848  
fax - 951.371.3635  
cell - 951.532.6109

caseyw@rencosales.com



**WASHINGTON WEEKLY**

**Republicans Seek to Undo Biden's Lead Limits on Water Regulations**



Republicans, along with the Trump administration, are working to repeal Biden-era rules that mandate the replacement of lead pipes across the U.S. over the next 13 years and lower the lead limit in drinking water. Environmentalists are alarmed by these efforts, as a repeal would prevent future lead line replacements and lower lead standards, exposing millions to lead contamination. Additionally, the Trump administration is attempting to reverse a ban on TCE, a toxic water pollutant linked to various health issues, particularly on military bases. Both moves are being pushed through using the Congressional Review Act, which could fast-track their repeal.

[For More Information Click Here](#)

**Effort to Overturn Appliance Efficiency Standards, Including Showerheads, Toilets**



President Donald Trump has directed the Environmental Protection Agency to revert to previous water and energy standards for household appliances, including light bulbs, sinks, toilets, showers, washing machines, and dishwashers. This move comes a day after he signed an order promoting plastic straws and rescinding a plan to reduce single-use plastics. Trump criticized President Biden's energy-efficiency regulations and called for a return to his own environmental policies, labeling them "common sense."

[For More Information Click Here](#)

Continued on page 18

SLOAN®



*DRS120 DropSpot Bottle Filler with Bi-level Cooler in Stainless Steel finish.*

## DropSpot™

Bottle Fillers & Coolers

**Ounce for ounce, a better option for hydration.**

With our new Bottle Fillers and Coolers you can refill on style, safety, and sustainability, delivering fresh drinking water with every sip.



To learn more visit  
[sloan.com/dropspot](https://sloan.com/dropspot)



*DRS100 DropSpot Bottle Filler in Stainless Steel finish.*



*DRS110 DropSpot Bottle Filler with Single-level Cooler in Stainless Steel finish.*

# Made to comply. Made to last.

Your Trusted Partner for Domestic  
Compliant Drainage Solutions.



Josam proudly offers a comprehensive portfolio of drainage products that meet stringent federal procurement laws, including the **Buy American Act (BAA)**, **Build America, Buy America Act (BABA)**, **Trade Agreements Act (TAA)**, and **American Iron and Steel (AIS) regulations**. Josam's compliance solutions ensure reliability, quality, and peace of mind.

Designed for federally funded projects such as

- Military Bases
- Waste Water Treatment Plants
- Government Buildings
- Hospitals
- Airports
- Universities



Learn More



A **WATTS** Brand



PLUMBING GROUP



## Superior Performance & System Reliability

DuRa Pipe™ enhanced epoxy coating applied to cast iron soil pipe and fittings. It is well suited for aggressive DWV applications where greater performance is required.



[ABIFoundry.com](http://ABIFoundry.com)



[Anaco-Husky.com](http://Anaco-Husky.com)



PIPE & COUPLING

[TylerPipe.com](http://TylerPipe.com)



Mainline Sales has over forty years experience as a professional manufacturers' representative firm covering **California, Nevada, Arizona, and Hawaii** :

- Plumbing (Residential & Commercial)
- Mechanical
- Fire Protection
- Industrial
- Irrigation
- Waterworks (Water & Sewer).

Mainline Sales operates **(6)** distribution centers and **(7)** offices strategically located in **Anaheim, San Diego, The Bay, Sacramento, Las Vegas, Phoenix, and Hawaii** which are supported by a seasoned staff of professionals that are dedicated to satisfying the value chain (specifiers, architects, builders, contractors, municipalities and distributors) from the initial specification through the final shipment, and after-market service of installed product.

We believe in delivering superior results for the manufacturers we have the honor of representing, by supporting our strategic relationships with the best people, systems, and analytics.

Anaheim Headquarters  
659 E. Ball Road | Anaheim, CA 92805

Customer Care (877) 300-9346  
cs@mlsalesinc.com | www.mlsalesinc.com

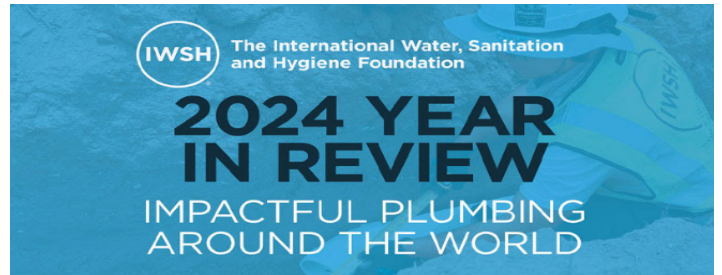
### Republicans Seek to Undo Biden's Lead Limits on Water Regulations



As the Super Bowl captivated millions, the New York City Department of Environmental Protection (DEP) prepared for a different kind of game day — the “Super Flush.” Water usage surges at three key moments: the start and end of the halftime show and the final whistle, with demand spiking to the equivalent of nearly 468,000 additional toilet flushes. To ensure stable water pressure, DEP operators send extra water to the Hillview Reservoir, maintaining seamless service for the city’s residents. Having monitored this trend for decades, DEP was well-prepared to manage the biggest municipal water supply in the country during the year’s most-watched event.

[For More Information Click Here](#)

### Republicans Seek to Undo Biden's Lead Limits on Water Regulations



In 2024, the International Water, Sanitation, and Hygiene Foundation (IWSH) changed lives through plumbing-driven solutions in underserved communities across the globe. From the Navajo Nation to Indigenous communities in Australia, IWSH improved water access and sanitation for more than 1,000 people in seven communities globally in 2024.

Our projects and impact are detailed in our beautiful IWSH 2024 Year in Review, demonstrating how plumbing expertise creates lasting change.

[For More Information Click Here](#)



# Rinnai® REHP SERIES™

## Electric Heat Pump Water Heater

### Technology and Comfort Combined

Rinnai now offers one of the most efficient and sustainable residential water heating solutions available, the Rinnai Electric Heat Pump Water Heater (REHP). The REHP delivers consistent hot water by extracting heat from the surrounding air and converting it to hot water while producing zero emissions.

When you install the REHP in your home, you are assured of meeting the highest efficiency standards and reduced energy usage and costs.

### Product Highlights

#### Efficiency

- Energy Star® 5.0
- UEF of 3.75/50 GL and 4.0/80 GL
- Meets the highest level of Builder efficiency standards
  - Only Builder model with CTA-2045
  - Title 24 Compliant
- Meets the highest level of federal and state rebate requirements
  - IRA (45L) tax credit eligible
- NEEA Tier 4
- High Cool Climate Efficiency (CCE)

#### Performance

- Designed with variable speed fan for whisper quiet operation
- Wide Operating Range as low as 37°F - 109°F
- Designed with a Micro Channel Heat Exchanger Condenser to optimize the heat transfer and enhance energy savings for best in class recovery rate
- 4.5 KW back up elements for extra comfort
- Demand-Response Enabled- Save money by reducing energy usage during peak demand

#### Installation and Serviceability






- Zero Clearance- Gain back net living space with less install footprint for flexible installation
- Installs as easily as an electric water heater
- Easy troubleshooting and serviceability
- Duct ready to install in tight spaces

**Rinnai.** Learn more at [rinnai.us](http://rinnai.us)



**5 Operating Modes to meet any hot water demand**



Part #	Included Accessories	
107000677	T&P Valve	
107000674	Drainage Pipe	
107000678	Drain Valve	
Part #	Optional Accessories	
103000120	EHPWH Ducting Kit	
103000119	EHPWH Leak Sensor Valve	

[rinnai.us](http://rinnai.us) | [rinnai.ca](http://rinnai.ca)

Rinnai America Corporation | 103 International Drive | Peachtree City, Georgia 30269 | [rinnai.us](http://rinnai.us) | [rinnai.ca](http://rinnai.ca) | 1-800-621-9419



PROUD SPONSOR



Official Water Heater of Stewart-Haas Racing and Tony Stewart Racing

FOLDS OF HONOR

2024165

Copyright 2024 Rinnai America Corporation. All rights reserved. Rinnai® and Creating a healthier way of living® are registered trademarks of Rinnai Corporation used under license by Rinnai America Corporation. Rinnai Electric Heat Pump Water Heater™ and Every Detail Matters™ are the trademarks of Rinnai America Corporation. Rinnai America Corporation continually updates materials, and as such, content is subject to change without notice.

2/2024

# Your Premier Providers of Life, Property and Asset Protection Solutions

## CLEAN AGENT FIRE SUPPRESSION

Our fire protection specialists bring you the finest in fire protection, including the most cost effective to the most environmentally green products available. Fike's **ECARO-25<sup>®</sup>** (using DuPont™ FE-25™ as the fire-extinguishing agent) is the best, most cost-effective clean agent system available. We offer a full line of leading-edge systems for a variety of applications:

- Cost-Effective Clean Agent Systems
- Green Inert Gas Systems
- Drop-in Halon Replacement
- In Cabinet / Small-Space Protection
- CO<sub>2</sub> Systems



## FIRE ALARM AND LIFE SAFETY

Our code-compliant fire alarm systems with specialty detection utilize high quality equipment from industry-leading manufacturers. We have extensive experience in projects from small commercial buildings, to large high-rise facilities, to sprawling industrial complexes. Our NICET certified sales team, designers, project managers, and technicians strive to exceed our client expectations.



- Addressable, Conventional, and Networked Fire Alarm Systems
- Voice Evacuation
- Linear Heat Detection
- Air Sampling
- Pre-action Sprinkler Detection & Control



## EMERGENCY POWER SHUTDOWN MANAGEMENT SYSTEM (EPSMS)

Fike's Emergency Power Shutdown Management System (EPSMS) is designed to consolidate and control equipment emergency power off in a timely, efficient and coordinated manner. EPSMS is used in many applications to:

- De-energize equipment during a fire
- Close fire dampers and turn off HVAC to contain fire and maintain proper concentration of fire suppressant
- Safely shutdown equipment during a flood or sprinkler system discharge
- Help protect fire department personnel from electrocution when fighting a fire



Call today for your life safety evaluation.



FACILITIES PROTECTION SYSTEMS

714-257-2244

[www.fpsys.com](http://www.fpsys.com)



925-484-3701

[www.gotoitsi.com](http://www.gotoitsi.com)

**American Society of Plumbing Engineers**

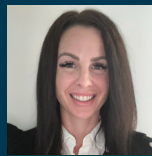
**Officers - Board of Directors**

Published by American Society of Plumbing Engineers, Los Angeles Chapter  
www.aspela.com // news.aspela.com

Over fifty years of dedication to the health and safety of the Southern California Community.  
A non-profit corporation. Local chapters do not speak for the society.



**President**  
**VAHAN MARGARYAN, CPD,**  
GPD  
ARUP  
(310) 422-7425  
vahan.margaryan@arup.com



**Corresponding Secretary**  
**CASEY WISE**  
Renco Sales, Inc.  
(951)532-6109  
caseyw@rencosales.com



**Editor**  
**MATT FARRELL**  
Renco Sales, Inc.  
(951)339-0153  
news.aspela@gmail.com



**Vice President Technical**  
**THURA ZIN CPD, GPD**  
ARUP  
(310) 650-7734  
thurazin53@gmail.com



**Treasurer**  
**EDGAR OCHOA**  
Southcoast Engineering  
Group  
(818) 224-2700  
eochoa@sceginco.com



**Women of ASPE Region 4  
Liaison**  
**LINDA DEUNAY**  
Enviro Products West  
(818) 687-6910  
linda@epwest.com



**Vice President Legislative**  
**AMIR TABAKH**  
LADWP  
amir.tabakh@ladwp.com



**Administrative Secretary**  
**JEFF ATLAS**  
Rinnai  
(661) 478-4565  
aspeneews@gmail.com



**Chapter Affiliate Liaison:**  
**GUILLERMO NEGRON**  
Lixil  
giullermo.negron@lixil.com



**Vice President Membership**  
**GABRIEL STARKMAN**  
DeltaQ  
gabriel@deltaqinc.com



**Chairman Board of  
Governors**  
**COREY NAKANISHI**  
PBS Engineers, Inc.  
cnakanishi@pbsengineers.com