

Content

VOLUME 6

President's Report	001
June Meeting Flyer	002
Upcoming Events	003
Donald F. Dickerson Golf Tournament	004
VP Technical Report	006
CADD/Bim Training	012



President's Report

Vahan Margaryan CPD, GPD President

Hello fellow ASPE LA members,

I hope you are all doing well.

On behalf of the ASPE LA Board and all ASPE members, I would like to extend our sincere appreciation to the LADWP La Kretz Innovation Campus staff for organizing an exceptionally well-executed event: the May 2025 ASPE LA Chapter meeting. The event was a great success, with an

impressive turnout of 107 participants. Armen Saiyan and Jorge Centeno delivered a presentation on LADWP's current strategy focused on electrification and decarbonization, addressing both the financial impacts on customers and potential rebate programs.

If you missed the presentation and would like a copy, please feel free to reach out to Thura or me.

Continued on page 3

AMERICAN SOCIETY OF PLUMBING ENGINEERS LOS ANGELES CHAPTER

June 11, 2025, Meeting
“Use of a Flexible Coupling”
By Mr. Steve Wortmann
Principal Engineer
Victaulic

WHAT YOU WILL LEARN:

The presentation will cover the following topics, with time for questions:

- Grooved Joint
- Flexible vs Rigid Coupling
- Flexible Coupling for Axial and Angular Deflection
- Flexible Coupling for Noise and Vibration Attenuation

MEETING LOCATION:

In Person:

*COURTYARD BY MARRIOTT BURBANK
2100 W EMPIRE AVE, BURBANK, CALIFORNIA 91504*

MEETING SCHEDULE:

5:30 pm – Check in.

6:30 pm – 7:30 pm – Presentation

COST: Pay at door only

Meeting Fee:

RSVP - \$55 and Retired BOD: \$30

Without RSVP - \$60

RSVP Online:

[RSVP](#)

By: June 10, 2025

THE SPEAKER:



Steve Wortmann is the Principal Engineer for Victaulic. With over 25 years of experience, he studied Mechanical Engineering at Lafayette University and is currently pursuing a master’s degree in acoustics from Penn State. Steve has contributed to our industry in many ways, being a lead member of ASPE, ASHRAE and ASA (Acoustical Society of America) and holds 10 patents for inventions in valving and fluid control. If you have any questions about the presentation, please contact Steve.Wortmann@Victaulic.com

For more information, visit our website [@www.aspe.com](http://www.aspe.com).



Continued from page 1

Special thanks go to Amir Tabakh, Armen Saiyan, Jim Kemper, Jorge Centeno, Richard Garcia, and the entire LADWP La Kretz team for making this event a truly memorable gathering. Please mark your calendars—ASPE LA will return to this extraordinary facility in May 2026.

The annual ASPE LA Donald Dickerson Golf Tournament is fast approaching, and there is still time to support or register for the event. For sponsorship opportunities and additional details, please refer to the event flyer.

At this time, there are no updates regarding our upcoming family picnic or fishing trip. Please stay tuned for further information.

Looking ahead, the 2025 ASPE Tech Symposium will be held at the Rosen Centre Hotel in Orlando, Florida, from Thursday, September 25 to Sunday, September 28, 2025. This premier event offers plumbing engineers and designers at all career levels the chance to engage in technical learning and valuable networking. The Product Show at the Tech Symposium provides a unique opportunity for attendees to interact directly with manufacturers of the products they specify, ask product-related questions, and even influence future product designs.

In addition, the Tech Symposium features professional development sessions led by industry experts. Each session provides 0.15 CEUs, which may be used to meet continuing education requirements for licenses and certifications.

Be well, stay well.

Upcoming Events

June 20, 2025

Donald F. Dickerson Golf
Tournament

August 2025

ASPE LA Product Show and
Technical Sessions

September 2025

ASPE LA Fishing Trip

October 2025

ASPE LA Family Picnic

December 13, 2025

2025 Holiday Party

DONALD F. DICKERSON GOLF TOURNAMENT 61ST ANNIVERSARY LA CHAPTER

Friday June 20, 2025



Brookside Golf & Country Club
1133 Rosemont Ave.
Pasadena, CA 91103 –T: 626-585-3594



**Team Best Ball Format
Shotgun Start @ 8:00am
Check in Begins @ 6:00am**

Sponsorship Opportunities Include:

Registration

Platinum Level: \$5000

- Special Recognition at Monthly ASPE Meetings
- 1-year Platinum Level Sponsor AD in ASPE-LA Website aspela.com
- Banner Recognition
- Three Golf Foursomes
- Ten Hole Sponsor Signs
- Extra Drink Tickets

Gold Level: \$2600

- Special Recognition at Monthly ASPE Meetings
- 1-year Gold Level Sponsor AD in ASPE-LA Website aspela.com
- Banner Recognition
- Two Golf Foursomes
- Six Hole Sponsor Signs
- Extra Drink Tickets

Silver Level: \$1800

- Special Recognition at Monthly ASPE Meetings
- 1-year Silver Level Sponsor AD in ASPE-LA Website aspela.com
- Banner Recognition
- One Golf Foursome
- Four Hole Sponsor Sign
- Extra Drink Tickets

Bronze Level: \$1200

- Special Recognition at Monthly ASPE Meetings
- 1-year Bronze Level sponsor AD in ASPE-LA Website aspela.com
- Banner Recognition
- One Golf Twosome
- Two Hole Sponsor Signs

Breakfast or Lunch: \$825

- Special Recognition at Monthly ASPE Meetings
- Banner Recognition
- Two Hole Sponsor Signs

Beverage Cart: \$550

- Special Recognition at Monthly ASPE Meetings
- Banner Recognition

Entry Fee: \$400 for 2 players (Minimum)

Foursome Discount Rate: \$750

- Golf w/Cart
- Breakfast and Lunch
- Drink Ticket and Prizes

Golf Tabletop Hole Sponsor:
Limited Availability. **First come first serve \$500** (\$400 if combined with any **Level Sponsorship**)

Golf Hole Sponsor:
Includes Signs on Both Courses \$250

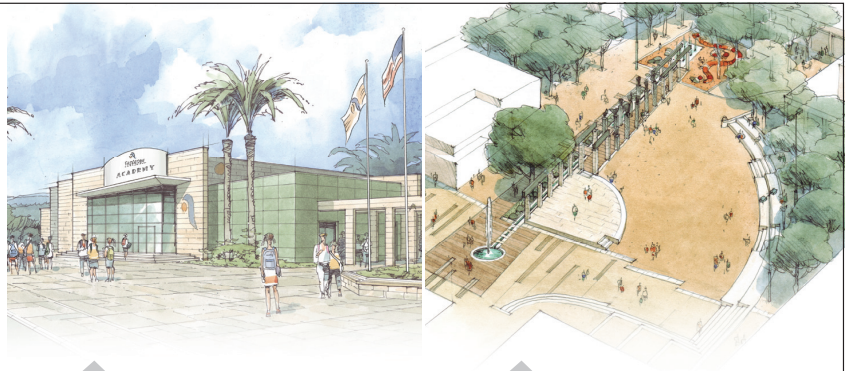
- Custom-designed golf sign/s with your company logo and/or products for all to see. They're yours to keep at the conclusion of the tournament.

All payments must be received no later than Friday, June 4th, 2025!! Receipt of payment is required for registration and/or inclusion in signage. Thank you for your cooperation. Please Note: All advertisements with Sponsorships will begin in our website as soon as sponsor payment is received. Anyone wanting to advertise in the ASPE-LA Newsletter should expect to pay at the beginning of the year.

Contact Name:		If less than a foursome, we will pair you with others.	
Firm Name:		Player Name	Player Company
Address:		1.	
City/St/Zip:		2.	
Phone:		3.	
E-mail:		4.	
Tabletop:		Player Registration Cost:	\$ _____
Make checks Payable to:	ASPE-LA	Sponsorship Cost:	\$ _____
Send form and checks to:	Thura Zin c/o ARUP 900 Wilshire Boulevard 19th Floor, Los Angeles, CA 90017 T: (213) 944-9178	TOTAL ENCLOSED:	\$ _____

NOTE: If paying by credit card, please email your completed form to Thura Zin at vptech.aspela@gmail.com so the payment can be run on the Square Device. Credit Card Number & Type of Card _____ CV# _____ Expiration Date _____, Billing zip code _____.

All proceeds from the tournament will benefit the ASPE Los Angeles Chapter. Reservations will be confirmed by receipt of registration and sponsorship fees.



T&S IS HERE >

EDUCATION

HEALTHCARE

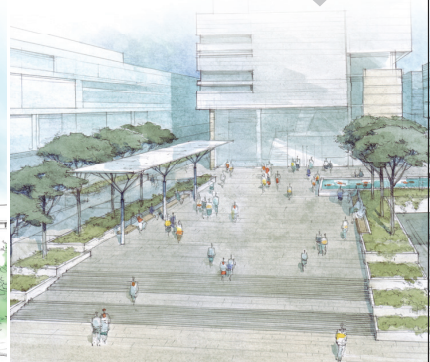
PUBLIC VENUES

COMMERCIAL OFFICES

T&S is proud to be a trusted name across a wide range of markets — staying at the forefront of today's evolving industry and providing a vast selection of reliable solutions that meet required codes and compliances.

Learn more at tsbrass.com/markets.

Find us in



T&S plumbing products reresented in So. Cal. by: **Delco Sales 714-888-2444**

New Representative: Mainline Sales

**One Mission.
One Focus.
No Distractions.**

Emergency equipment isn't just what we do. It's all we do. Your safety is too important to entrust to just anyone. All Guardian emergency eyewash and shower products are inspected, fully assembled, and 100% water-tested in our Chicago facility, which means you receive the most reliable emergency equipment each time, every time. Your safety isn't just a priority. It's our only priority.

Visit gesafety.com to learn more.



Guardian

EMERGENCY EYEWASH & SHOWER TECHNOLOGY



Represented by:
Mainline Sales
(877) 300-9346



KIMAX® Glass Drain and Vent Systems

- Sustainable**
Low VOC's, no offgassing 
- Durable**
Maximum corrosion resistance 
- Flexible**
Easy to install 
- Economical**
Lowest life-cycle costs 
- BIM**
BIM Objects available 

Your Local Distributor
The George Yardley Company
 1-714-241-7700
 rob@georgeyardley.com

SCHOTT North America, Inc.
 info.drainline@us.schott.com
 us.schott.com/drainline



SCHOTT
glass made of ideas

Technical Report

BY Thura Zin CPD, GPD

The ASPE-LA monthly meeting was held on May 14, 2025, at the LADWP La Kretz Innovation Campus. On behalf of the ASPE-LA Board of Directors, we would like to thank Mr. Armen Saiyan, P.E., Mr. Jim Kemper, and Mr. Jorge Centeno, P.E., for their insightful contributions. We also extend our thanks to Amir and the LADWP La Kretz Innovation Campus staff for helping organize this successful chapter event.

Mr. Saiyan and Mr. Centeno presented LADWP's current strategies focused on electrification and decarbonization, addressing both the financial impacts on customers and potential rebate programs. If you would like a copy of the presentation, please contact us.

We had a great turnout—59 ASPE members and professionals, and 48 LADWP and LA City staff—for a total of 107 attendees. Thank you to all who participated!

Upcoming Meeting – June 11, 2025 (Back at Courtyard by Marriott, Burbank)

We're excited to return to the Courtyard in Burbank for our June meeting.

Our next meeting will be held on Wednesday, June 11, 2025, featuring a technical presentation by Mr. Steve Wortmann, Principal Engineer at Victaulic. His presentation, titled "Use of a Flexible Coupling," will cover:

Continued on page 10



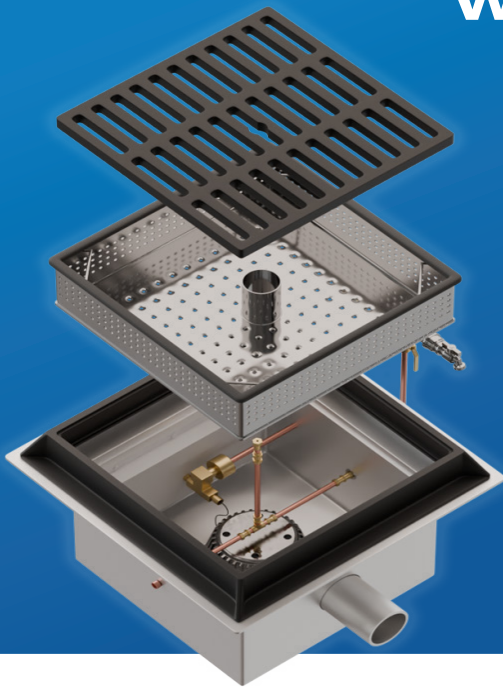


WASTEWATER DIVERSION SYSTEMS, INC.

WDS ON DEMAND

Over 45 years Experience | 100% American-Owned and Operated

WDS DEMAND DRIVEN WASH DOWN WITH CAN WASH



Trash can wash out CANNOT go to the stormwater. It must be contained and sent to the sewer. WDS solved the problem by incorporating our can wash into our wash-down systems.

Trash cans are clean & wash pads are clean because our lead-free diversion valve opens with water use to send all wash water to the sewer. When the wash is finished, the diversion valve automatically closes, sealing the sewer & directing clean rainwater to the storm drain.

WDS uses American made materials from American companies to build an American made product.

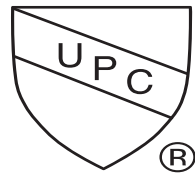
Model WDS-WDTS4X4CW

Suitable for but not limited to the following uses:

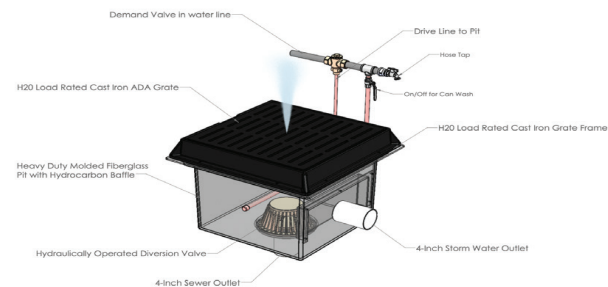
Airport Wash Sites, Container Wash Bays, Dog Kennels and Dog Parks, Emergency, Pool, Deck and Beach Showers, Fast Food, and all Trash Bin Locations, Fire Truck Wash Down, Trash Can Wash Down, Loading Docks, Marinas, Military Equipment Wash Pads, Rental Car Locations, Schools Food and Trash Bin Areas and other Unroofed Wash Pads.

Complies with CA Prop 65

Specs and drawings available at eeeusa.net



IAPMO IGC 234 2016
File Number 16834



Made in AMERICA



Jeff Atlas

Territory Sales Manager

Rinnai America Corporation
 103 International Drive | Peachtree City, GA 30269
 Toll Free: 1-800-621-9419
 Mobile: 661-456-6682 | Tech Support: 1-888-746-6247
 E-mail: jatlas@rinnai.us
 Website: rinnai.us

Rinnai



1006 Brighton Court
 Vacaville, California 95687
www.daybreaktech.com

Brett Barron
 SoCal Account Manager
C 714-904-2954
P 707-451-9335
F 707-451-9445

2500 E Imperial Hwy. #201
 Brea, CA. 92821-6121
brett@daybreaktech.com
MANUFACTURERS' REPRESENTATIVE



Matthew Farrell

1450 Railroad Street
 Corona, CA 92882-6929

WWW.RENCOSALES.COM

office - 800.273.6267
 fax - 951.371.3635
 fax - ariz/nev - 877.251.2659
 cell - 951.339.0153
matthewf@rencosales.com

AT LAST - IT'S ARRIVED!

Just what you've been waiting for!

Independent third-party performance verification under a US test protocol for a Physical Water Conditioner - the alternative to the conventional water softener.

- **AT LOW COST**
 (You can't afford not to treat hard water anymore)
- **ZERO PLANT ROOM FOOTPRINT**
 (Attaches to the wall or to pipe work)
- **ZERO SERVICING**
 (No Salt)
- **ZERO MAINTENANCE**
 (Which means it is 100% reliable)
- **WARRANTED FOR 20 YEARS**



Case Study: Panorama Towers, Las Vegas, NV.

Cost to install: **\$55,000 ✓**
 Savings over conventional softener in year one: **\$168,000 ✓**
 Estimated 3-year savings: **\$500,000 ✓**
 Annual Running Costs: **\$200**

Download the Engineer's Specifier Guide from www.aqua-rex.com

Scale Down. Soften Up.

aqua-rex.com 877-640-2170



TEST REPORT

5001 E. Philadelphia Street
 Ontario, California - USA 91761 - 2816
 Ph: 909-472-4100 | Fax: 909-472-4243
<http://www.iapmortl.org>

Report Number: 2536-18001-002 Project No.: 29225
 Report Issued: February 26, 2018.
 Client: Aqua-Rex 3301 Spring Mountain Road Ste 18 Las Vegas, NV 89102 Contact: Jonny Seccombe
 Source of Samples: The samples were shipped to IAPMO R&T Lab from Aqua-Rex, and received in good condition on October 11, 2017.
 Date of Testing: October 25, 2017 through December 15, 2017.
 Sample Description: Scale Prevention Device; model: Aqua-Rex WK1-E.
 Scope of Testing: The purpose of the testing is to determine the efficacy of the Scale Prevention Device per section 5 of IAPMO IGC 335-2018, entitled "Rapid Scaling Test for Scale Prevention Devices".

CONCLUSION: When tested per Section 5 of IAPMO IGC 335-2018, Aqua-Rex WK1-E reduced scaling by 83% when applied to Las Vegas water heated to 180°F.

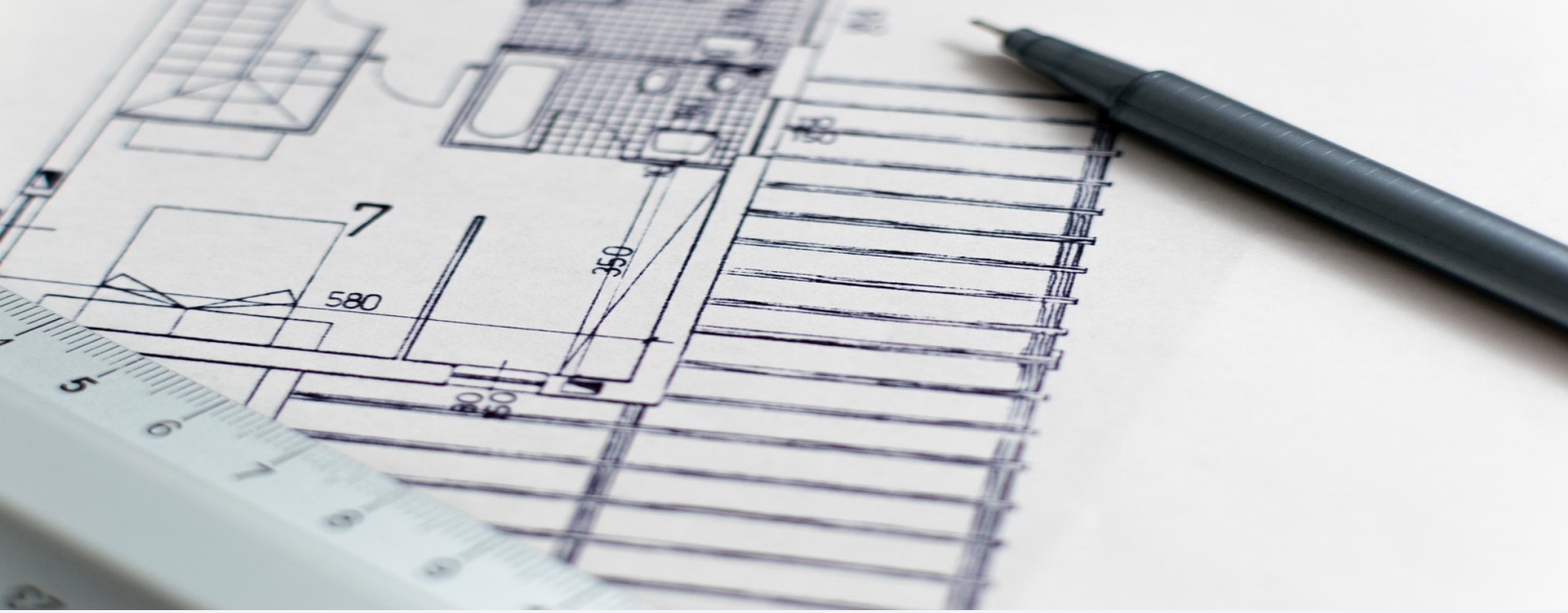
Tested by,

Reviewed by,

Hanks Ninh
 Hanks Ninh, Project Engineer

Sean Vu
 Sean Vu, P.E., Manager, Specialty Projects

 <p>Stainless Steel & Terrazzo Plumbing Fixtures</p>	 <p>Portable, surface, and wall mounted hand washing solutions.</p>	<p>ACORN</p>  <p>Thermostatic Mixing Valves & Electronic Tempering Systems.</p>	 <p>Eye Washes, Eye/Face Washes, Emergency Drench Showers, Hoses, & Mixing Valves.</p>
 <p>Vacuum Plumbing Systems for Correctional, Commercial, Water Conservation, and Infection Prevention.</p>	 <p>Polypropylene (PP-R) Pipe for use in pressurized plumbing and mechanical systems of all sizes.</p>	<p>Conex Bänninger</p>  <p>Refrigeration Copper Press Fitting for VRF Applications.</p>	 <p>Instantaneous Mini Tank & Tankless Electric Water Heater Solutions for Point of Use Applications.</p>
 <p>Energy Efficient Heat Pump Water Heaters for Commercial and Industrial Applications</p>	 <p>Access Panels, Lead Roof Flashings, and Roof Access Hatches.</p>	 <p>Engineered Plumbing & Drainage Products.</p>	 <p>3 PSI Differential Trap Primers, Electronic Trap Primers, Distribution Units, and Water Hammer Arrestors.</p>
 <p>Polypropylene, Polymer Concrete, Stainless Steel, Cast Iron, and Fiberglass Trench Drain Solutions</p>	 <p>Faucets, Tubs, Lavatories, & Accessories for Kitchen and Bathroom Applications.</p>	 <p>Bronze, Brass & Cast Iron Gate, Globe & Check Ball Valves.</p>	 <p>Indoor/Outdoor Drinking Fountains, Water Coolers, Bottle Fillers, & Hand Washing Stations.</p>
 <p>Custom Solutions for Modern Luxury Hospitality and Commercial Restrooms.</p>	 <p>Fire Protection Products.</p>	 <p>Sump, Effluent & Sewage Controls, Engineered Custom Controls, Embedded Controls, Ceramic Filtration Solutions.</p>	 <p>Stainless Steel Surgical Scrub Sinks, Toilets, & Accessories for Health Facilities.</p>



Continued from page 6

- Grooved Joint Systems
- Flexible vs. Rigid Couplings
- Flexible Couplings for Axial and Angular Deflection
- Flexible Couplings for Noise and Vibration Attenuation

Don't miss this exciting and informative session—we look forward to seeing you there!

2025 Golf Tournament – June 20, 2025

Our annual ASPE-LA Golf Tournament will be held on Friday, June 20, 2025. Sponsorship opportunities are still available!

Invite your fellow engineers and contractors to join us for a great day of golf and networking. This year, 12 golf holes will feature tabletop displays by our manufacturer sales teams. There will be raffle prizes, food, and fun!

Tournament Details:

- Sponsorship Info:** Available on our website – Golf Tournament Sponsorship
- Payment Note:** Online payment is not yet available. Please contact me directly to arrange payment.
- Flyer:** Will be shared via our LinkedIn Group and the ASPE Los Angeles website.

RSVP Status (as of now):

- (2) Platinum Sponsors

Continued on page 13

1450 Railroad Street

Corona, Ca 92882

**RENCO
SALES**
INC.

MANUFACTURERS REPRESENTATIVE

WWW.RENCOSALES.COM

Phone: 951-371-8848

Fax: 951-371-3635

**ADVANCED
AQUADUCK SYSTEMS**

Rectangular under walk drainage pipe and fittings waterheater pans and duck-pullers

WWW.AQUADUCKSYSTEMS.COM

OASIS

Since 1910 Water delivery system, Quasar, bottle filler, drinking fountain, retrofit for competing fillers, outdoor wall mount

WWW.OASISCOOLER.COM

DURA

TIGRE

ABS & PVC fittings, Irrigation, Pool & Spa, Plumbing, Agricultural and many other products.

WWW.DURAPLASTICS.COM

JOSAM

A WATTS Brand

Commercial drainage products, stainless steel Push-Fit pipe & fittings, trench drains, stainless steel drains

WWW.JOSAM.COM

Global Flex Mfg.

Seismic, Stainless steel, bronze & teflon hose assemblies in size ranging from 1/4" to 12" diameter

WWW.GLOBALFLEXMFG.COM

Gastite

Flexible gas corrugated stainless steel tubing, fittings, & accessories

WWW.GASTITE.COM

GATCO

FINE BATHWARE

High quality designer bathroom towel bars, mirrors, shower curtain rods and countertop accessories

WWW.GATCO-INC.COM

McGUIRE

Plumbing specialty in cast brass p-traps, sink & lavatory drain strainers, Pro Wrap ADA, & heavy supply stops

WWW.MCGUIREMFG.COM

**FIAT
PRODUCTS**

Specialty products and plumbing fixtures designed for every application, including shower floors, mop basins, pet wash stations and more

WWW.FIATPRODUCTS.COM

**MATCO
NORCA**

Supplier of globally sourced, code-compliant plumbing & PVF products for use in residential, commercial, & industrial

WWW.MATCO-NORCA.COM

**W
STERN-WILLIAMS**

Terrazzo mop sinks, shower pans, & outdoor fountains

WWW.STERNWILLIAMS.COM

Commercial, industrial, institutional, food service, electronic, laboratory, & light commercial faucets

**CHICAGO
FAUCETS**

Geberit Group

WWW.CHICAGOFAUCETS.COM

Div 22

Thermostatic mixing valves, Keltech Heaters, Washfountains, Emergency Equipment, Showers, Lavatories, Patient Care, Anti Ligature

Bradley

A WATTS Brand

Div 10

WWW.BRADLEYCORP.COM

Bathroom Accessories, Partitions Baked Enamel, Phenolic, Euro, Bradmar Plastic, Stainless Steel, Plastic Lockers, Benches and Cubbies

WOODFORD

WOODFORD

Commercial/Residential wall, roof, & yard hydrants for warm and freezing climates

WWW.WOODFORDMFG.COM

ISIMET

Laboratory service panels, utility controllers & solenoids

WWW.ISIMET.COM

**MAPA
PRODUCTS**

Adjustable nylon based roof supports, Mechanical supports, and tracking

WWW.MAPAPRODUCTS.COM

WATCO

WATCO

Complete line of bath wastes, tub trim kits & lavatory drain accessories

WWW.WATCOMFG.COM

STATE-FUNDED CADD/BIM

TRAINING SCHEDULE

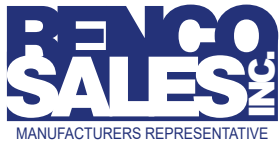


Interactive Online Live Instructor

Session 3

CLASS	DAYS	START	END
REVIT MEP	M-W (5:30 to 9:30 pm)	5/21/25	8/13/25
MEETING DATES: *May- 21, 28 *June- 2, 4, 9,11, 16, 18, 23, 25, 30 *July- 2, 7, 9, 14, 16, 21, 23, 28, 30 *August- 4, 6,11, 13, 18			
REVIT ARCHITECTURE	T-TH (5:30 to 9:30 pm)	5/22/25	8/14/25
MEETING DATES: *May- 22, 27, 29 *June- 3, 5, 10, 12,17, 19, 24, 26 *July- 1, 3, 8, 10, 15, 17, 22, 24, 29, 31 *August- 5, 7, 12, 14			
ENHANCED REVIT	T-TH (5:30 to 9:30 pm)	5/22/25	8/14/25
MEETING DATES: *May- 22, 27, 29 *June- 3, 5, 10, 12, 17, 19, 24, 26 *July- 1, 3, 8, 10, 15, 17, 22, 24, 28, 31 *August- 5, 7, 12, 14			
Civil 3D	T-TH (5:30 to 9:30 pm)	5/22/25	8/14/25
MEETING DATES: *May- 22, 27, 29 *June- 3, 5, 10, 12, 17, 19, 24, 26 *July- 1, 3, 8, 10, 15, 17, 22, 24, 28, 31 *August- 5, 7, 12, 14			
Bluebeam	T-TH (5:30 to 8:30 pm)	5/22/25	8/14/25
MEETING DATES: *May- 22, 27, 29 *June- 3, 5, 10, 12, 17, 19, 24, 26 *July- 1, 3, 8, 10, 15, 17, 22, 24, 28, 31 *August- 5, 7, 12			
Advanced AutoCAD *NEW*			
Friday (5:30 to 9:30 pm) Saturday (8 am to 12 pm)		5/23/25	8/23/25
MEETING DATES: *May- 23, 30, 32 *June- 6, 7,13, 14, 20, 21, 27, 28 *July- 11, 12, 18, 19, 25, 26 *August- 1, 2, 8, 9, 15, 16, 22, 23			

For Enrollment, please contact BARRY barry@ach.edu OR barry@westech.edu OR call 949-393-8866, you can also visit us at www.ach.edu and click on **State-Funded Training Program**.



Mike Brown

1450 Railroad Street
Corona, CA 92882-6929

WWW.RENCOSALES.COM

tel - 951.371.8848
fax - 951.371.3635
cell - 951.833.2805

mikeb@rencosales.com



Casey Wise

1450 Railroad Street
Corona, CA 92882-6929

WWW.RENCOSALES.COM

tel - 951.371.8848
fax - 951.371.3635
cell - 951.532.6109

caseyw@rencosales.com

Continued from page 10

- (3) Gold Sponsors
- (11) Silver Sponsors
- (5) Tabletops
- (10) Foursomes
- (1) Twosome and Hole Sponsor

Spots are still available for sponsorships and player registrations—sign up soon!

2025 Product Show & Technical Seminar – August 13, 2025

Save the date! The ASPE-LA Product Show and Technical Seminar will take place on:

- Date: Wednesday, August 13, 2025
- Location: Quiet Cannon, 901 Via San Clemente, Montebello, CA 90640 (same venue as 2023)

Event Details:

- Morning: Two technical sessions
- Afternoon: Product show
- Chaired by: Myself, with Vahan as Co-Chair

·Outreach: We'll be reaching out to manufacturer sales reps soon

·Event Flyer: Coming in June

2025 Fishing Trip – Coming in September

Our ASPE-LA President, Vahan, is chairing this year's fishing trip, scheduled for September 2025. Sponsorship opportunities will be available.

Stay tuned for more details and save the date!

2025 ASPE Tech Symposium – Orlando, Florida

The 2025 ASPE Technical Symposium will be held at the Rosen Centre Hotel in Orlando, Florida, from September 25–28, 2025. Additional details to follow—stay tuned!

Get Involved

If you have ideas for future technical program topics, we'd love to hear from you! Email any of our board members with your suggestions.

Be sure to check your inbox for meeting announcements and visit our Technical Calendar on the website for upcoming events.

Thank you for your continued participation and support. We look forward to seeing you at our

SLOAN®



DRS120 DropSpot Bottle Filler with Bi-level Cooler in Stainless Steel finish.

DropSpot™

Bottle Fillers & Coolers

Ounce for ounce, a better option for hydration.

With our new Bottle Fillers and Coolers you can refill on style, safety, and sustainability, delivering fresh drinking water with every sip.



To learn more visit
sloan.com/dropspot



DRS100 DropSpot Bottle Filler in Stainless Steel finish.



DRS110 DropSpot Bottle Filler with Single-level Cooler in Stainless Steel finish.

DRINKING FOUNTAINS

DRINKING FOUNTAINS, BOTTLE FILLERS & PET FOUNTAINS

COMPLIES WITH NSF/ANSI/CAN 61: Q₁ (AB100)

ADA MODELS AVAILABLE



Model 7700-90

Stern-Williams outdoor fountains, bottle fillers, pet fountains and shower towers are among our more popular products. Our durable fountains are vandal resistant with an all-steel heavy-duty construction, including an access door for security and simple maintenance. Stern-Williams can customize products based on the customers needs, whether it's a push-button, solar panel, dog bowl, leash hook or a combination.

We offer 10 powder coated color options, as well as a chrome clear option. Contact your Stern-Williams' rep* to learn more about the variety of options, dimensions, and local availability.



Silver (-SV)



Green (-GR)



Bronze (-BZ)



Orange (-OR)



Red (-RD)



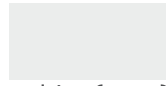
Sand (-SD)



Blue (-BL)



Yellow (-YL)



White (-WH)



Black (-BK)



7925-GR

Dual Fountain
Bottle Filler



5325-90-GR

Drinking Fountain with Foot
Spray & Pet Fountain



7700-OR

Bottle Filler
& Fountain



5700-90-GR

Dual Drinking Fountains
& Pet Fountain

*See sternwilliams.com/connect for local representation



PLUMBING GROUP



Superior Performance & System Reliability

DuRa Pipe™ enhanced epoxy coating applied to cast iron soil pipe and fittings. It is well suited for aggressive DWV applications where greater performance is required.



ABIFoundry.com



Anaco-Husky.com



PIPE & COUPLING

TylerPipe.com



Mainline Sales has over forty years experience as a professional manufacturers' representative firm covering **California, Nevada, Arizona, and Hawaii** :

- Plumbing (Residential & Commercial)
- Mechanical
- Fire Protection
- Industrial
- Irrigation
- Waterworks (Water & Sewer).

Mainline Sales operates **(6)** distribution centers and **(7)** offices strategically located in **Anaheim, San Diego, The Bay, Sacramento, Las Vegas, Phoenix, and Hawaii** which are supported by a seasoned staff of professionals that are dedicated to satisfying the value chain (specifiers, architects, builders, contractors, municipalities and distributors) from the initial specification through the final shipment, and after-market service of installed product.

We believe in delivering superior results for the manufacturers we have the honor of representing, by supporting our strategic relationships with the best people, systems, and analytics.

Anaheim Headquarters
659 E. Ball Road | Anaheim, CA 92805

Customer Care (877) 300-9346
cs@mlsalesinc.com | www.mlsalesinc.com

Rinnai®

REHP[®]SERIES™

Electric Heat Pump Water Heater

Technology and Comfort Combined

Rinnai now offers one of the most efficient and sustainable residential water heating solutions available, the Rinnai Electric Heat Pump Water Heater (REHP). The REHP delivers consistent hot water by extracting heat from the surrounding air and converting it to hot water while producing zero emissions.

When you install the REHP in your home, you are assured of meeting the highest efficiency standards and reduced energy usage and costs.

Product Highlights

Efficiency

- Energy Star® 5.0
- UEF of 3.75/50 GL and 4.0/80 GL
- Meets the highest level of Builder efficiency standards
 - Only Builder model with CTA-2045
 - Title 24 Compliant
- Meets the highest level of federal and state rebate requirements
 - IRA (45L) tax credit eligible
- NEEA Tier 4
- High Cool Climate Efficiency (CCE)

Performance

- Designed with variable speed fan for whisper quiet operation
- Wide Operating Range as low as 37°F - 109°F
- Designed with a Micro Channel Heat Exchanger Condenser to optimize the heat transfer and enhance energy savings for best in class recovery rate
- 4.5 KW back up elements for extra comfort
- Demand-Response Enabled- Save money by reducing energy usage during peak demand






Installation and Serviceability

- Zero Clearance- Gain back net living space with less install footprint for flexible installation
- Installs as easily as an electric water heater
- Easy troubleshooting and serviceability
- Duct ready to install in tight spaces



5 Operating Modes to meet any hot water demand



Part #	Included Accessories	
107000677	T&P Valve	
107000674	Drainage Pipe	
107000678	Drain Valve	
Part #	Optional Accessories	
103000120	EHPWH Ducting Kit	
103000119	EHPWH Leak Sensor Valve	

Rinnai. Learn more at rinnai.us

rinnai.us | rinnai.ca

Rinnai America Corporation | 103 International Drive | Peachtree City, Georgia 30269 | rinnai.us | rinnai.ca | 1-800-621-9419



PROUD SPONSOR



Official Water Heater of Stewart-Haas Racing and Tony Stewart Racing

FOLDS OF HONOR

2024165

Copyright 2024 Rinnai America Corporation. All rights reserved. Rinnai® and Creating a healthier way of living® are registered trademarks of Rinnai Corporation used under license by Rinnai America Corporation. Rinnai Electric Heat Pump Water Heater™ and Every Detail Matters™ are the trademarks of Rinnai America Corporation. Rinnai America Corporation continually updates materials, and as such, content is subject to change without notice.

2/2024

Your Premier Providers of Life, Property and Asset Protection Solutions

CLEAN AGENT FIRE SUPPRESSION

Our fire protection specialists bring you the finest in fire protection, including the most cost effective to the most environmentally green products available. Fike's **ECARO-25[®]** (using DuPont™ FE-25™ as the fire-extinguishing agent) is the best, most cost-effective clean agent system available. We offer a full line of leading-edge systems for a variety of applications:

- Cost-Effective Clean Agent Systems
- Green Inert Gas Systems
- Drop-in Halon Replacement
- In Cabinet / Small-Space Protection
- CO₂ Systems



FIRE ALARM AND LIFE SAFETY

Our code-compliant fire alarm systems with specialty detection utilize high quality equipment from industry-leading manufacturers. We have extensive experience in projects from small commercial buildings, to large high-rise facilities, to sprawling industrial complexes. Our NICET certified sales team, designers, project managers, and technicians strive to exceed our client expectations.



- Addressable, Conventional, and Networked Fire Alarm Systems
- Voice Evacuation
- Linear Heat Detection
- Air Sampling
- Pre-action Sprinkler Detection & Control



EMERGENCY POWER SHUTDOWN MANAGEMENT SYSTEM (EPSMS)

Fike's Emergency Power Shutdown Management System (EPSMS) is designed to consolidate and control equipment emergency power off in a timely, efficient and coordinated manner. EPSMS is used in many applications to:

- De-energize equipment during a fire
- Close fire dampers and turn off HVAC to contain fire and maintain proper concentration of fire suppressant
- Safely shutdown equipment during a flood or sprinkler system discharge
- Help protect fire department personnel from electrocution when fighting a fire



Call today for your life safety evaluation.



FACILITIES PROTECTION SYSTEMS

714-257-2244

www.fpsys.com



925-484-3701

www.gotoitsi.com

American Society of Plumbing Engineers

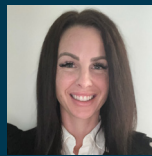
Officers - Board of Directors

Published by American Society of Plumbing Engineers, Los Angeles Chapter
www.aspela.com // news.aspela.com

Over fifty years of dedication to the health and safety of the Southern California Community.
A non-profit corporation. Local chapters do not speak for the society.



President
VAHAN MARGARYAN, CPD,
GPD
ARUP
(310) 422-7425
vahan.margaryan@arup.com



Corresponding Secretary
CASEY WISE
Renco Sales, Inc.
(951)532-6109
caseyw@rencosales.com



Editor
MATT FARRELL
Renco Sales, Inc.
(951)339-0153
news.aspela@gmail.com



Vice President Technical
THURA ZIN CPD, GPD
ARUP
(310) 650-7734
thurazin53@gmail.com



Treasurer
EDGAR OCHOA
Southcoast Engineering
Group
(818) 224-2700
eochoa@sceginco.com



Women of ASPE Region 4
Liaison
LINDA DEUNAY
Enviro Products West
(818) 687-6910
linda@epwest.com



Vice President Legislative
AMIR TABAKH
LADWP
amir.tabakh@ladwp.com



Administrative Secretary
JEFF ATLAS
Rinnai
(661) 478-4565
aspeneews@gmail.com



Chapter Affiliate Liaison:
GUILLERMO NEGRON
Lixil
giullermo.negron@lixil.com



Vice President Membership
GABRIEL STARKMAN
WAHASO - Water Harvesting Solutions
Gabriels@wahaso.com



Chairman Board of
Governors
COREY NAKANISHI
PBS Engineers, Inc.
cnakanishi@pbsengineers.com