

## Content

## VOLUME 2

President's Report	001
February Meeting Flyer	002
Upcoming Events	003
VP Technical Report	005
Holiday Party Photos	009
Shoot 4 Scouts	011
IAPMO Letter	012



## President's Report

Vahan Margaryan CPD, GPD President

Hello, fellow ASPE LA members,

I hope you are all doing well.

It feels like only a few days ago we were celebrating Christmas, the New Year, and our Holiday Party, and now here we are in February 2025. Time flies, and we have many activities planned for this year. Your support will be crucial in turning these goals into reality. If you have some spare time and would

like to proactively support ASPE LA, please don't hesitate to reach out to Thura or me.

January presented a couple of challenges for our ASPE LA Chapter. Attendance at our January meeting was below average, and our Holiday Party had a lower turnout than expected. We anticipated at least 60 participants, but only around 43 attended. This may have been due to the devastating fires earlier that week or the timing of

Continued on page 3

**AMERICAN SOCIETY OF PLUMBING ENGINEERS LOS ANGELES CHAPTER**

**February 12, 2025, Meeting  
“Curbless Shower Design”  
By Ms. Terrese Tuchscher  
Manager, Commercial Sales West**



**WHAT YOU WILL LEARN:**

The presentation will cover the following topics, with time for questions:

- Universal Design and its principles in showers
- Curbless Shower Design
- Linear Drain Types
- Advantages of a Linear Drain
- Construction of a UD shower using a linear drain

**MEETING LOCATION:**

In Person:

*COURTYARD BY MARRIOTT BURBANK  
2100 W EMPIRE AVE, BURBANK, CALIFORNIA 91504*

**MEETING SCHEDULE:**

5:30 pm – Check in

6:30 pm – 7:30 pm – Presentation

**COST: Pay at door only**

Meeting Fee:

RSVP - \$55 and Retired BOD: \$30

Without RSVP - \$60

**RSVP Online:**

[RSVP](#)

**By: February 11, 2025**

**THE SPEAKER:**



Terrese Tuchscher is the Commercial Sales Manager at Oatey, a leading manufacturer and distributor of high-quality plumbing products for residential and commercial applications. With over 30 years of in-depth and consultative sales expertise, Terrese excels in driving brand specifications and cultivating growth opportunities within the commercial sector. A dedicated professional, Terrese is known for delivering top-tier service to her clients. She maintains active memberships in ASHE and ASPE, where she served as the Region 2 Liaison for Women of ASPE.

Outside of her professional life, Terrese enjoys travel, design, quality time with her family, and giving back through volunteer work with the elderly.

If you have additional questions or needed information on her presentation, you can reach her at: [ttuchscher@oatey.com](mailto:ttuchscher@oatey.com)

For more information, visit our website  
[@www.aspe-la.com](http://www.aspe-la.com).



Continued from page 1

the event, which coincided with a long weekend when many members were out of town. We are treating this experience as a learning opportunity, which is why ASPE LA's 2025 Holiday Party will be held on Saturday, December 13, 2025—mark your calendars!

I would like to express my sincere gratitude to all the attendees of our Holiday Party for their positive attitudes, to the Monkey Bump music band for their excellent entertainment, and to the staff and management of Bellezza Banquet Hall for their incredible service and high-quality meals. Special thanks also go to our very own “paparazzi,” Casey Wise, for providing fantastic pictures from the event.

## Upcoming Events

### May 14, 2025

ASPE LA Meeting at LADWP La Kretz Innovation Campus

### August 2025

ASPE LA Product Show and Technical Sessions

### September 2025

ASPE LA Fishing Trip

### October 2025

ASPE LA Family Picnic

### December 13, 2025

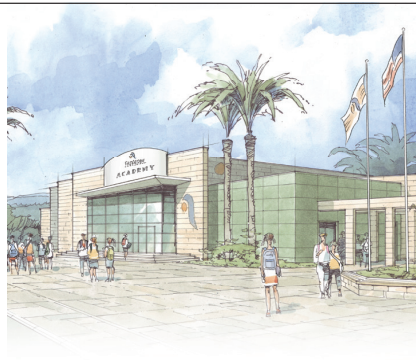
2025 Holiday Party

If you missed our January 8 meeting, I encourage you to review the new SCAQMD Rule 1146.2 requirements. At the meeting, Steve McCool from Dawson gave a detailed presentation covering all the key points about phasing out gas-fired appliances and outlined possible exceptions. It was an excellent presentation that sparked some lively discussions—thank you, Steve!

Are you considering taking the Certified in Plumbing Design (CPD) exam this year or in the future? ASPE is offering a virtual workshop this March to help you prepare and ace the exam. The

Continued on page 7





## T&S IS HERE >

T&S is proud to be a trusted name across a wide range of markets — staying at the forefront of today's evolving industry and providing a vast selection of reliable solutions that meet required codes and compliances.

Learn more at [tsbrass.com/markets](http://tsbrass.com/markets).

Find us in

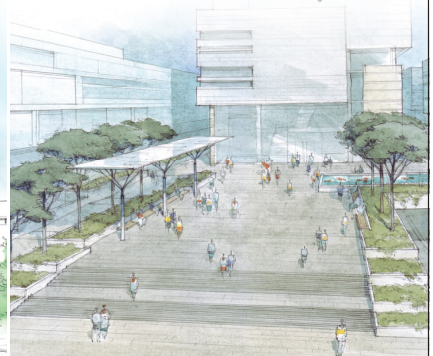


EDUCATION

HEALTHCARE

PUBLIC VENUES

COMMERCIAL OFFICES



T&S plumbing products reresented in So. Cal. by: **Delco Sales 714-888-2444**

## New Representative: Mainline Sales

**One Mission.  
One Focus.  
No Distractions.**

**Emergency equipment isn't just what we do. It's all we do.** Your safety is too important to entrust to just anyone. All Guardian emergency eyewash and shower products are inspected, fully assembled, and 100% water-tested in our Chicago facility, which means you receive the most reliable emergency equipment each time, every time. Your safety isn't just a priority. It's our only priority.

Visit [gesafety.com](http://gesafety.com) to learn more.



**Guardian**

EMERGENCY EYEWASH & SHOWER TECHNOLOGY



Represented by:  
**Mainline Sales**  
(877) 300-9346

**KIMAX® Glass Drain and Vent Systems**

- Sustainable**  
Low VOC's, no offgassing
- Durable**  
Maximum corrosion resistance
- Flexible**  
Easy to install
- Economical**  
Lowest life-cycle costs
- BIM**  
BIM Objects available

Your Local Distributor  
**The George Yardley Company**  
 1-714-241-7700  
 rob@georgeyardley.com

**SCHOTT North America, Inc.**  
 info.drainline@us.schott.com  
 us.schott.com/drainline

**SCHOTT**  
 glass made of ideas

# Technical Report

BY Thura Zin CPD, GPD

It is wonderful to hear that Mr. Steve McCool's presentation on "SCAQMD Rule 1146.2 Amendment 2024: Phasing Out Gas-Fired Appliances" was a well-received topic. We anticipated a strong turnout for this subject, but due to the two fires in Los Angeles, many members were unable to attend. As a result, only 25 members were present.

On behalf of the ASPE-LA officers, I would like to extend a special thanks to Mr. Steve McCool, Manager – Facilities Support Group, Dawson Company, for his presentation. He provided valuable insights into what designers should be aware of regarding the future phase-out of gas-fired appliances. If you have any questions or would like to discuss further, please contact him at smccool@

dawsonco.com.

For our upcoming meeting on February 12, 2025, Ms. Terrese Tuchscher, Manager, Commercial Sales West, Oatey Company, will present on "Curb-less Shower Design." This will be an excellent opportunity to learn about universal shower design and how linear drains can support ADA-compliant showers.

Our 2025 ASPE Los Angeles Holiday Party was another successful event for our chapter, with 45 attendees. Please check out the President's report for more details on the event. A big thank you to all who attended! Mark your calendars—next year's holiday party will be held on the second Saturday of

**Continued on page 9**



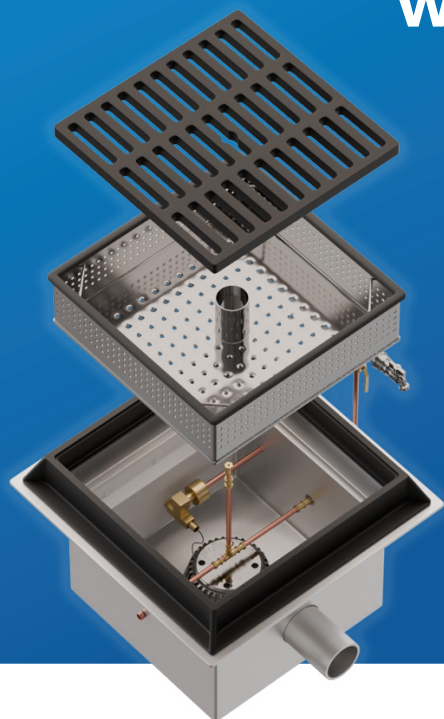


# WASTEWATER DIVERSION SYSTEMS, INC.

## WDS ON DEMAND

Over 45 years Experience | 100% American-Owned and Operated

### WDS DEMAND DRIVEN WASH DOWN WITH CAN WASH



Trash can washout is no longer a polluting problem. Simply place the inverted trash can on the cast iron grate, turn on the water and like a flash, the trash can is clean.

The wash area is also clean because the pit-mounted transfer valve automatically opens with water use, transferring contaminated wash water to the sewer.

Stormwater goes to the storm drain when the transfer valve is closed.



### Model WDS-WDTS4X4CW

Suitable for but not limited to the following uses:

Airport Wash Sites, Container Wash Bays, Dog Kennels and Dog Parks, Emergency, Pool, Deck and Beach Showers, Fast Food, and all Trash Bin Locations, Fire Truck Wash Down, Trash Can Wash Down, Loading Docks, Marinas, Military Equipment Wash Pads, Rental Car Locations, Schools Food and Trash Bin Areas and other Unroofed Wash Pads.

Specs and drawings available at [eeeusa.net](http://eeeusa.net)



Made in AMERICA



## Jeff Atlas

Territory Sales Manager

### Rinnai America Corporation

103 International Drive | Peachtree City, GA 30269  
Toll Free: 1-800-621-9419  
Mobile: 661-456-6682 | Tech Support: 1-888-746-6247  
E-mail: jatlas@rinnai.us  
Website: rinnai.us

# Rinnai



1006 Brighton Court  
Vacaville, California 95687  
www.daybreaktech.com

**Brett Barron**  
SoCal Account Manager  
C 714-904-2954  
P 707-451-9335  
F 707-451-9445

2500 E Imperial Hwy. #201  
Brea, CA. 92821-6121  
brett@daybreaktech.com  
MANUFACTURERS' REPRESENTATIVE



### Matthew Farrell

1450 Railroad Street  
Corona, CA 92882-6929

WWW.RENCOSALES.COM



office - 800.273.6267  
fax - 951.371.3635  
fax - ariz/nev - 877.251.2659  
cell - 951.339.0153  
matthewf@rencosales.com

Continued from page 3

workshop will take place over six days—March 4, 6, 11, 13, 25, and 27—from 5–7 p.m. CDT each day. The cost is \$300 for ASPE members and \$500 for nonmembers, and registration is available on the ASPE Education website: ASPE Education: CPD Review Classes.

Be well, stay well.

# AT LAST – IT'S ARRIVED!

## Just what you've been waiting for!



Independent third-party performance verification under a US test protocol for a Physical Water Conditioner - the alternative to the conventional water softener.



- AT LOW COST (You can't afford not to treat hard water anymore)
- ZERO PLANT ROOM FOOTPRINT (Attaches to the wall or to pipe work)
- ZERO SERVICING (No Salt)
- ZERO MAINTENANCE (Which means it is 100% reliable)
- WARRANTED FOR 20 YEARS

### Case Study: Panorama Towers, Las Vegas, NV.

Cost to install: **\$55,000** ✓  
Savings over conventional softener in year one: **\$168,000** ✓  
Estimated 3-year savings: **\$500,000** ✓  
Annual Running Costs: **\$200** ✓

Download the Engineer's Specifier Guide from [www.aqua-rex.com](http://www.aqua-rex.com)

Scale Down. Soften Up.

aqua-rex.com 877-640-2170



### TEST REPORT

5001 E. Philadelphia Street  
Ontario, California - USA 91761 - 2816  
Ph: 909-472-4100 | Fax: 909-472-4243  
<http://www.iapmo.org>

Report Number: 2536-18001-002 Project No.: 29225  
Report Issued: February 26, 2018.  
Client: Aqua-Rex, 2301 Spring Mountain Road Ste 18 Las Vegas, NV 89102 Contact: Jonny Secombe  
Source of Samples: The samples were shipped to IAPMO R&T Lab from Aqua-Rex, and received in good condition on October 11, 2017.  
Date of Testing: October 25, 2017 through December 15, 2017.  
Sample Description: Scale Prevention Device; model: Aqua-Rex WK1-E.  
Scope of Testing: The purpose of the testing is to determine the efficacy of the Scale Prevention Device per section 5 of IAPMO IGC 335-2018, entitled "Rapid Scaling Test for Scale Prevention Devices".  
CONCLUSION: When tested per Section 5 of IAPMO IGC 335-2018, Aqua-Rex WK1-E, reduced scaling by 83% when applied to Las Vegas water heated to 180°F.

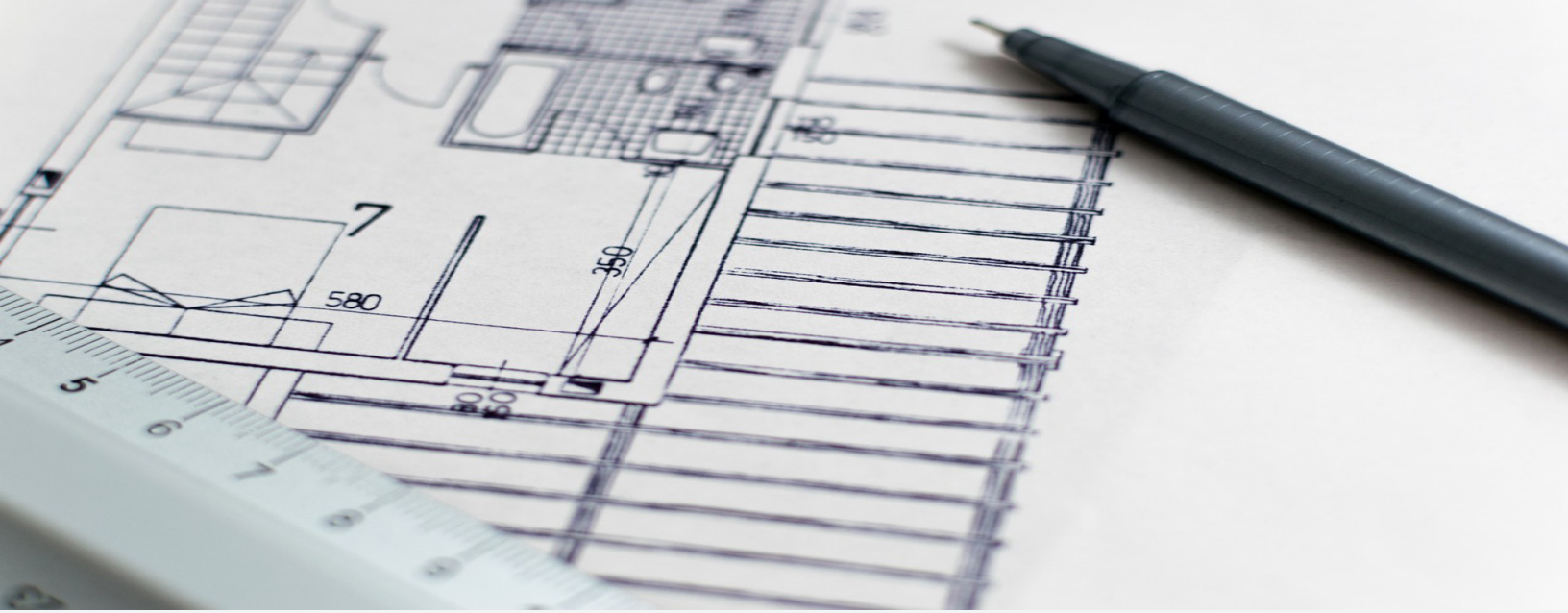
Tested by,

Reviewed by,

*Hanks Ninh*  
Hanks Ninh, Project Engineer

*Sean Vuu*  
Sean Vuu, P.E., Manager, Specialty Projects

 <p>Stainless Steel &amp; Terrazzo Plumbing Fixtures</p>	 <p>Portable, surface, and wall mounted hand washing solutions.</p>	 <p>Thermostatic Mixing Valves &amp; Electronic Tempering Systems.</p>	 <p>Eye Washes, Eye/Face Washes, Emergency Drench Showers, Hoses, &amp; Mixing Valves.</p>
 <p>Vacuum Plumbing Systems for Correctional, Commercial, Water Conservation, and Infection Prevention.</p>	 <p>Polypropylene (PP-R) Pipe for use in pressurized plumbing and mechanical systems of all sizes.</p>	 <p>Refrigeration Copper Press Fitting for VRF Applications.</p>	 <p>Instantaneous Mini Tank &amp; Tankless Electric Water Heater Solutions for Point of Use Applications.</p>
 <p>Energy Efficient Heat Pump Water Heaters for Commercial and Industrial Applications</p>	 <p>Access Panels, Lead Roof Flashings, and Roof Access Hatches.</p>	 <p>Engineered Plumbing &amp; Drainage Products.</p>	 <p>3 PSI Differential Trap Primers, Electronic Trap Primers, Distribution Units, and Water Hammer Arrestors.</p>
 <p>Polypropylene, Polymer Concrete, Stainless Steel, Cast Iron, and Fiberglass Trench Drain Solutions</p>	 <p>Faucets, Tubs, Lavatories, &amp; Accessories for Kitchen and Bathroom Applications.</p>	 <p>Bronze, Brass &amp; Cast Iron Gate, Globe &amp; Check Ball Valves.</p>	 <p>Indoor/Outdoor Drinking Fountains, Water Coolers, Bottle Fillers, &amp; Hand Washing Stations.</p>
 <p>Custom Solutions for Modern Luxury Hospitality and Commercial Restrooms.</p>	 <p>Fire Protection Products.</p>	 <p>Sump, Effluent &amp; Sewage Controls, Engineered Custom Controls, Embedded Controls, Ceramic Filtration Solutions.</p>	 <p>Stainless Steel Surgical Scrub Sinks, Toilets, &amp; Accessories for Health Facilities.</p>



**Continued from page 5**

December 2025.

The 2025 ASPE Tech Symposium is a 2.5-day conference taking place at the Rosen Centre Hotel in Orlando, Florida, from September 24 to 28. This event offers plumbing engineers and designers at all career levels a premier opportunity for technical learning and networking. Registration will open in the spring. At the symposium, you can choose from a variety of professional development sessions across multiple tracks to customize your learning experience. These sessions will teach you how to integrate the latest design techniques into your projects, with hands-on calculations and application examples. Save the dates—we hope to see you there!

The ASPE LA 2025 Golf Tournament will be held on Friday, June 20, 2025. Come and join us for a great day of golf and networking!

As always, please do not hesitate to email any board member with topic suggestions for our technical programs. Watch your email for updates on the

next meeting, and check our Technical Calendar for upcoming Technical Sessions.

Take care of yourselves and each other. Stay safe!



1450 Railroad Street

Corona, Ca 92882

**RENCO SALES INC.**

MANUFACTURERS REPRESENTATIVE  
WWW.RENCOSALES.COM

Phone: 951-371-8848

Fax: 951-371-3635

**ADVANCED AQUADUCK SYSTEMS**

Rectangular under walk drainage pipe and fittings waterheater pans and duck-pullers

WWW.AQUADUCKSYSTEMS.COM

**CHICAGO FAUCETS**

Commercial, industrial, institutional, food service, electronic, laboratory, & light commercial faucets

WWW.CHICAGOFAUCETS.COM

**Gastite**

Flexible gas corrugated stainless steel tubing, fittings, & accessories

WWW.GASTITE.COM

**JOSAM**

A WATTS Brand

Commercial drainage products, stainless steel Push-Fit pipe & fittings, trench drains, stainless steel drains

WWW.JOSAM.COM

**OASIS**

Since 1910 Water delivery system, Quasar, bottle filler, drinking fountain, retrofit for competing fillers, outdoor wall mount

WWW.OASISCOOLER.COM



A WATTS Brand

Thermostatic mixing valves, Keltech Heaters, Washfountains, Emergency Equipment, Showers, Lavatories, Patient Care, Anti Ligature

WWW.BRADLEYCORP.COM

**FIAT PRODUCTS**

Specialty products and plumbing fixtures designed for every application, including shower floors, mop basins, pet wash stations and more

WWW.FIATPRODUCTS.COM

**GATCO FINE BATHWARE**

High quality designer bathroom towel bars, mirrors, shower curtain rods and countertop accessories

WWW.GATCO-INC.COM

**MATCO NORCA**

Supplier of globally sourced, code-compliant plumbing & PVF products for use in residential, commercial, & industrial

WWW.MATCO-NORCA.COM



**Div 10**

Bathroom Accessories, Partitions Baked Enamel, Phenolic, Euro, Bradmar Plastic, Stainless Steel, Plastic Lockers, Benches and Cubbies

WWW.BRADLEYCORP.COM



ABS & PVC fittings, Irrigation, Pool & Spa, Plumbing, Agricultural and many other products.

WWW.DURAPLASTICS.COM

**Global Flex Mfg.**

Seismic, Stainless steel, bronze & teflon hose assemblies in size ranging from 1/4" to 12" diameter

WWW.GLOBALFLEXMFG.COM

**McGUIRE**

Plumbing specialty in cast brass p-traps, sink & lavatory drain strainers, Pro Wrap ADA, & heavy supply stops

WWW.MCGUIREMFG.COM



STERN-WILLIAMS

Terrazzo mop sinks, shower pans, & outdoor fountains

WWW.STERNWILLIAMS.COM

Products include EVO Pex Fittings, Sharkbite Pex, HydroFlame, TestRite, TMV, Pro Lock, PRV, & T&P



**HoldRite™**

WWW.RWC.COM



**SharkBite™**



**CashAcme™**



**John Guest®**

WOODFORD



Commercial/Residential wall, roof, & yard hydrants for warm and freezing climates

WWW.WOODFORDMFG.COM

**ISIMET**

Laboratory service panels, utility controllers & solenoids

WWW.ISIMET.COM

**MAPA PRODUCTS**

Adjustable nylon based roof supports, Mechanical supports, and tracking

WWW.MAPAPRODUCTS.COM

WATCO



Complete line of bath wastes, tub trim kits & lavatory drain accessories

WWW.WATCOMFG.COM

# SHOOT 4 SCOUTS

*BENEFITING TROOP 209 BURBANK*

**SAT, MARCH 22, 2025**

**THIS EVENT IS HOSTED BY**

**\$160**  
PER PERSON



**ENTRY FEE INCLUDES**

**NSCA REGISTERED**

100 CLAYS, 100 SHOT SHELLS  
(AMMO) BBQ LUNCH, EAR & EYE  
PROTECTION, LOANER SHOTGUNS  
ARE AVAILABLE IF NEEDED. WE'LL EVEN  
THROW IN A GREAT TIME!



## RAFFLE DRAWING

**BERETTA A400 SEMI-AUTO  
SHOTGUN SPORTING CLAYS  
LESSONS SHOOTING  
ACCESSORIES AND CLOTHING**



Scan me!

**SIGN UP NOW!**

**MOORENMOORE.COM/SHOOT-4-SCOUTS**





**Mike Brown**

1450 Railroad Street  
Corona, CA 92882-6929

WWW.RENCOSALES.COM

tel - 951.371.8848  
fax - 951.371.3635  
cell - 951.833.2805

mikeb@rencosales.com



**Casey Wise**

1450 Railroad Street  
Corona, CA 92882-6929

WWW.RENCOSALES.COM

tel - 951.371.8848  
fax - 951.371.3635  
cell - 951.532.6109

caseyw@rencosales.com



## IAPMO's Response to the California Fires

**Dave Viola**  
Chief Executive Officer

Dear IAPMO Members,

I wanted to provide an update on IAPMO's response to the fires that have ravaged communities throughout Los Angeles, California.

For those who have been displaced and have lost so much, IAPMO is working on a few initiatives. We'd like to provide immediate support through the donation of essential items, and we are in discussions with our partners to see how we will help in the longer term.

Through our social impact arm, the International, Water, Sanitation and Hygiene Foundation (IWSH), we are organizing hygiene essentials to be given to organizations aiding fire victims. Thus far we have gathered hundreds of toothbrushes, toothpaste, hand sanitizer and many other products that we will be delivering to the LA Food Bank.

In the days and weeks following natural disasters it's imperative to provide food, drinking water, shelter,

and sanitation services for communities. Personal hygiene is essential to maintain dignity and health, which is why last year IWSH launched a program called the Hygiene Bucket Challenge, where we provide hygiene kits to shelters around the US. We are now bringing that program to Los Angeles and doing what we can to provide hygiene items for people in need.

Now is a time to help our neighbors, help the city in which IAPMO was created, and do whatever we can to be of assistance. If you would like to get involved with the IWSH efforts (e.g. donating items or helping to deliver items), please reach out to Sandra Soto at [sandra.soto@iapmo.org](mailto:sandra.soto@iapmo.org). Our WHQ West facility team is collecting all donations which we will deliver to LA Food Bank and other organizations. If you and your family wish to donate items for those in need, please let us know. This is completely voluntary.

If you or your organization would like to join in these efforts, please let me know. As the city begins to realize the needs for rebuilding and assistance in

**Continued on page 16**

SLOAN®



*DRS120 DropSpot Bottle Filler with Bi-level Cooler in Stainless Steel finish.*

## DropSpot™

Bottle Fillers & Coolers

**Ounce for ounce, a better option for hydration.**

With our new Bottle Fillers and Coolers you can refill on style, safety, and sustainability, delivering fresh drinking water with every sip.



To learn more visit  
[sloan.com/dropspot](https://sloan.com/dropspot)



*DRS100 DropSpot Bottle Filler in Stainless Steel finish.*



*DRS110 DropSpot Bottle Filler with Single-level Cooler in Stainless Steel finish.*



PLUMBING GROUP



## Superior Performance & System Reliability

DuRa Pipe™ enhanced epoxy coating applied to cast iron soil pipe and fittings. It is well suited for aggressive DWV applications where greater performance is required.



[ABIFoundry.com](http://ABIFoundry.com)



[Anaco-Husky.com](http://Anaco-Husky.com)



PIPE & COUPLING

[TylerPipe.com](http://TylerPipe.com)



Mainline Sales has over forty years experience as a professional manufacturers' representative firm covering **California, Nevada, Arizona, and Hawaii** :

- Plumbing (Residential & Commercial)
- Mechanical
- Fire Protection
- Industrial
- Irrigation
- Waterworks (Water & Sewer).

Mainline Sales operates **(6)** distribution centers and **(7)** offices strategically located in **Anaheim, San Diego, The Bay, Sacramento, Las Vegas, Phoenix, and Hawaii** which are supported by a seasoned staff of professionals that are dedicated to satisfying the value chain (specifiers, architects, builders, contractors, municipalities and distributors) from the initial specification through the final shipment, and after-market service of installed product.

We believe in delivering superior results for the manufacturers we have the honor of representing, by supporting our strategic relationships with the best people, systems, and analytics.

Anaheim Headquarters  
659 E. Ball Road | Anaheim, CA 92805

Customer Care (877) 300-9346  
cs@mlsalesinc.com | www.mlsalesinc.com

Continued from page 12

the coming weeks, IAPMO stands ready to do what we can, and will keep our members updated with ways to provide more specialized support.

To learn more about opportunities to provide support or get involved as a volunteer in relief efforts, please check the two links below from Mutual Aid Los Angeles. The spreadsheets outline the organizations that are currently offering all forms of assistance around Los Angeles and what products and volunteers each organization needs.

For In Person Volunteer Opportunities click [here](#).

For Fire and Windstorm Resources click [here](#).

Thank you and please stay safe,

## Heat Trace Shower

With Halo® Technology

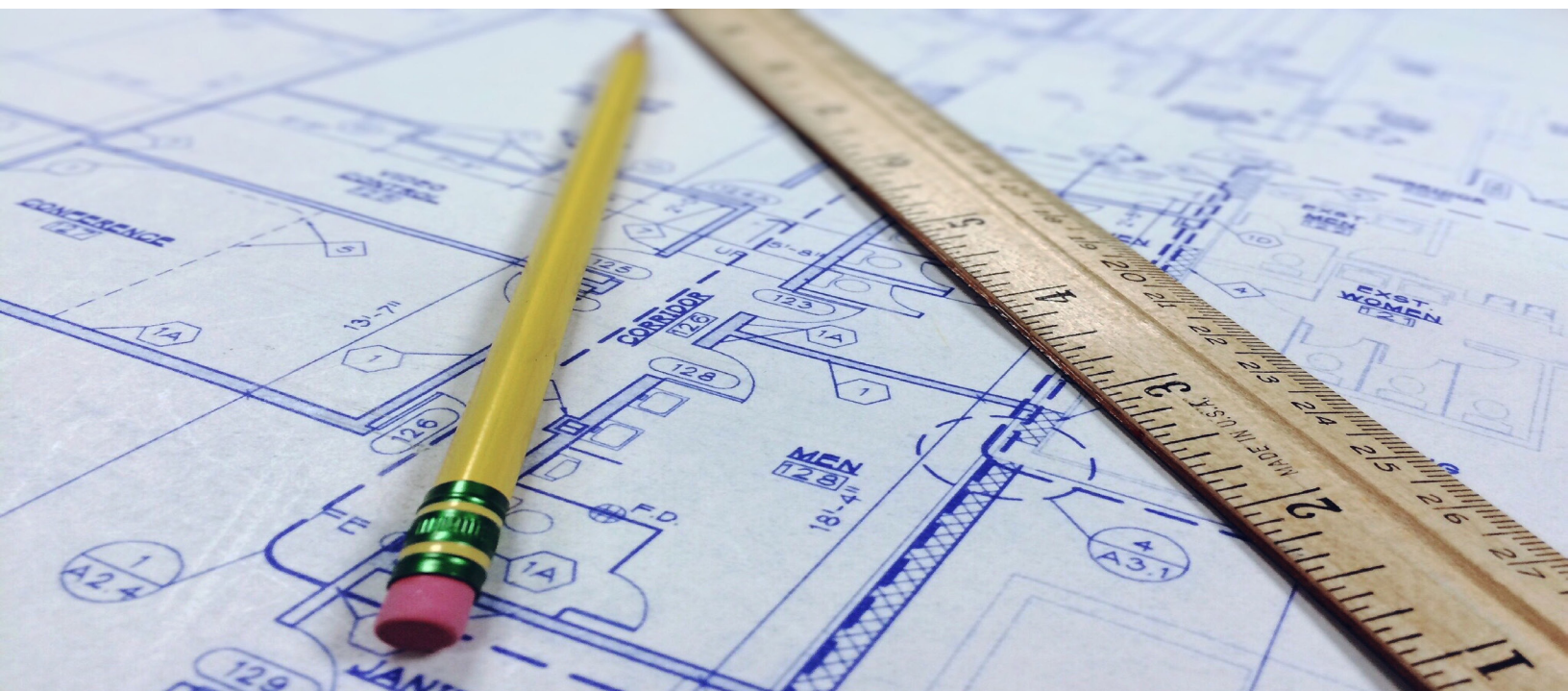


Safe, Fast Relief in Extreme Environments



A WATTS Brand

bradleycorp.com



# Rinnai®

## REHP® SERIES™

### Electric Heat Pump Water Heater

#### Technology and Comfort Combined

Rinnai now offers one of the most efficient and sustainable residential water heating solutions available, the Rinnai Electric Heat Pump Water Heater (REHP). The REHP delivers consistent hot water by extracting heat from the surrounding air and converting it to hot water while producing zero emissions.

When you install the REHP in your home, you are assured of meeting the highest efficiency standards and reduced energy usage and costs.

#### Product Highlights

##### Efficiency

- Energy Star® 5.0
- UEF of 3.75/50 GL and 4.0/80 GL
- Meets the highest level of Builder efficiency standards
  - Only Builder model with CTA-2045
  - Title 24 Compliant
- Meets the highest level of federal and state rebate requirements
  - IRA (45L) tax credit eligible
- NEEA Tier 4
- High Cool Climate Efficiency (CCE)

##### Performance

- Designed with variable speed fan for whisper quiet operation
- Wide Operating Range as low as 37°F - 109°F
- Designed with a Micro Channel Heat Exchanger Condenser to optimize the heat transfer and enhance energy savings for best in class recovery rate
- 4.5 KW back up elements for extra comfort
- Demand-Response Enabled- Save money by reducing energy usage during peak demand






##### Installation and Serviceability

- Zero Clearance- Gain back net living space with less install footprint for flexible installation
- Installs as easily as an electric water heater
- Easy troubleshooting and serviceability
- Duct ready to install in tight spaces



5 Operating Modes to meet any hot water demand



Part #	Included Accessories	
107000677	T&P Valve	
107000674	Drainage Pipe	
107000678	Drain Valve	
Part #	Optional Accessories	
103000120	EHPWH Ducting Kit	
103000119	EHPWH Leak Sensor Valve	

Rinnai. Learn more at [rinnai.us](http://rinnai.us)

[rinnai.us](http://rinnai.us) | [rinnai.ca](http://rinnai.ca)

Rinnai America Corporation | 103 International Drive | Peachtree City, Georgia 30269 | [rinnai.us](http://rinnai.us) | [rinnai.ca](http://rinnai.ca) | 1-800-621-9419



PROUD SPONSOR



Official Water Heater of Stewart-Haas Racing and Tony Stewart Racing

FOLDS OF HONOR

2024165

Copyright 2024 Rinnai America Corporation. All rights reserved. Rinnai® and Creating a healthier way of living® are registered trademarks of Rinnai Corporation used under license by Rinnai America Corporation. Rinnai Electric Heat Pump Water Heater™ and Every Detail Matters™ are the trademarks of Rinnai America Corporation. Rinnai America Corporation continually updates materials, and as such, content is subject to change without notice.

2/2024

# Your Premier Providers of Life, Property and Asset Protection Solutions

## CLEAN AGENT FIRE SUPPRESSION

Our fire protection specialists bring you the finest in fire protection, including the most cost effective to the most environmentally green products available. Fike's **ECARO-25**<sup>®</sup> (using DuPont™ FE-25™ as the fire-extinguishing agent) is the best, most cost-effective clean agent system available. We offer a full line of leading-edge systems for a variety of applications:

- Cost-Effective Clean Agent Systems
- Green Inert Gas Systems
- Drop-in Halon Replacement
- In Cabinet / Small-Space Protection
- CO<sub>2</sub> Systems



## FIRE ALARM AND LIFE SAFETY

Our code-compliant fire alarm systems with specialty detection utilize high quality equipment from industry-leading manufacturers. We have extensive experience in projects from small commercial buildings, to large high-rise facilities, to sprawling industrial complexes. Our NICET certified sales team, designers, project managers, and technicians strive to exceed our client expectations.



- Addressable, Conventional, and Networked Fire Alarm Systems
- Voice Evacuation
- Linear Heat Detection
- Air Sampling
- Pre-action Sprinkler Detection & Control



## EMERGENCY POWER SHUTDOWN MANAGEMENT SYSTEM (EPSMS)

Fike's Emergency Power Shutdown Management System (EPSMS) is designed to consolidate and control equipment emergency power off in a timely, efficient and coordinated manner. EPSMS is used in many applications to:

- De-energize equipment during a fire
- Close fire dampers and turn off HVAC to contain fire and maintain proper concentration of fire suppressant
- Safely shutdown equipment during a flood or sprinkler system discharge
- Help protect fire department personnel from electrocution when fighting a fire



Call today for your life safety evaluation.



FACILITIES PROTECTION SYSTEMS

714-257-2244

[www.fpsys.com](http://www.fpsys.com)



925-484-3701

[www.gotoitsi.com](http://www.gotoitsi.com)

**American Society of Plumbing Engineers**

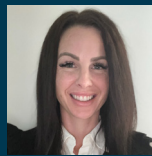
**Officers - Board of Directors**

Published by American Society of Plumbing Engineers, Los Angeles Chapter  
www.aspela.com // news.aspela.com

Over fifty years of dedication to the health and safety of the Southern California Community.  
A non-profit corporation. Local chapters do not speak for the society.



**President**  
**VAHAN MARGARYAN, CPD,**  
**GPD**  
**ARUP**  
(310) 422-7425  
vahan.margaryan@arup.com



**Corresponding Secretary**  
**CASEY WISE**  
**Renco Sales, Inc.**  
(951)532-6109  
caseyw@rencosales.com



**Editor**  
**MATT FARRELL**  
**Renco Sales, Inc.**  
(951)339-0153  
news.aspela@gmail.com



**Vice President Technical**  
**THURA ZIN CPD, GPD**  
**ARUP**  
(310) 650-7734  
thurazin53@gmail.com



**Treasurer**  
**EDGAR OCHOA**  
**Southcoast Engineering**  
**Group**  
(818) 224-2700  
eochoa@sceginco.com



**Women of ASPE Region 4**  
**Liaison**  
**LINDA DEUNAY**  
**Enviro Products West**  
(818) 687-6910  
linda@epwest.com



**Vice President Legislative**  
**AMIR TABAKH**  
**LADWP**  
amir.tabakh@ladwp.com



**Administrative Secretary**  
**JEFF ATLAS**  
**Rinnai**  
(661) 478-4565  
aspeneews@gmail.com



**Chapter Affiliate Liaison:**  
**GUILLERMO NEGRON**  
**Lixil**  
giullermo.negron@lixil.com



**Vice President Membership**  
**GABRIEL STARKMAN**  
**DeltaQ**  
gabriel@deltaqinc.com



**Chairman Board of**  
**Governors**  
**COREY NAKANISHI**  
**PBS Engineers, Inc.**  
cnakanishi@pbsengineers.com