

## Content

## VOLUME 4

President's Report	001
March Meeting Flyer	002
Upcoming Events	003
Donald F. Dickerson Golf Tournament	004
VP Technical Report	006
Shoot 4 Scouts Thank You	012
IAPMO Washingto News	013



## President's Report

Vahan Margaryan CPD, GPD President

Hello, fellow ASPE LA members,

I hope you are all doing well.

Mr. Enrique Gonzales, the Manager of Code Development for the International Association of Plumbing and Mechanical Officials (IAPMO), delivered an exceptionally engaging presentation during our meeting on March 12. Several updates to the Uniform Plumbing Code that he shared

prompted lively debate. As the California Plumbing Code will be updated accordingly and is likely to be adopted by many municipalities in January 2026, it is crucial for plumbing engineers to prepare themselves to interpret the forthcoming code accurately.

Determining fixture counts per CPC Table 422.1 for general-use facilities is becoming increasingly complex. Mr. Gonzales has graciously agreed to

Continued on page 3

AMERICAN SOCIETY OF PLUMBING ENGINEERS LOS ANGELES CHAPTER

**April 9, 2025, Meeting**  
**“Commercial Restrooms Reinvented”**  
**By Mr. Tim Schroeder**  
**Business Development Manager at Kohler**

**WHAT YOU WILL LEARN:**

The presentation will cover the following topics, with time for questions:

- Intro Into Commercial Restrooms
- Trends
- Restroom of The Future

**MEETING LOCATION:**

In Person:

*COURTYARD BY MARRIOTT BURBANK  
2100 W EMPIRE AVE, BURBANK, CALIFORNIA 91504*

**MEETING SCHEDULE:**

5:30 pm – Check in

6:30 pm – 7:30 pm – Presentation

**COST: Pay at door only**

Meeting Fee:

RSVP - \$55 and Retired BOD: \$30

Without RSVP - \$60

**RSVP Online:**

[RSVP](#)

**By: April 8, 2025**

**THE SPEAKER:**



Tim Schroeder is the Business Development Manager for Commercial in West Region at Kohler Co. With over 30 years of experience in the plumbing industry, he has held various roles overseeing the design, development, and manufacturing of end use plumbing devices. Throughout his career, he has focused on commercial plumbing, bringing innovative solutions to emerging industry challenges. If you have additional questions or needed information on his presentation, you can reach him at:

[Timothy.Schroeder@kohler.com](mailto:Timothy.Schroeder@kohler.com)

For more information, visit our website:

[www.aspela.com](http://www.aspela.com)



## Upcoming Events

### May 14, 2025

ASPE LA Meeting at LADWP La Kretz Innovation Campus

### June 20, 2025

Donald F. Dickerson Golf Tournament

### August 2025

ASPE LA Product Show and Technical Sessions

### September 2025

ASPE LA Fishing Trip

### October 2025

ASPE LA Family Picnic

### December 13, 2025

2025 Holiday Party

Continued from page 1

conduct another presentation for the ASPE LA Chapter in February or March of 2026 to address our concerns.

While the ASPE LA Board anticipated that IAPMO's presentations would draw significant attendance, we underestimated the number of attendees based on RSVPs. Consequently, some attendees were unable to be served dinner, as the kitchen was not prepared for such a large turnout. We would like to remind everyone to please RSVP if you plan to attend the meetings. This helps ensure that all members leave the event satisfied.

ASPE members and affiliates provided substantial support for the Shoot 4 Scouts event benefiting Troop 209 in Burbank. It was a pleasure to see numerous ASPE members on March 22 at the scenic hillsides of Sylmar. Excellent weather, a positive attitude, and outstanding participants made this event especially memorable. The ASPE Board of Directors greatly appreciates our affiliates' support and our members' participation—commendable work all around.

Reminder – The 2025 Certified in Plumbing Design (CPD) exam will be held via remote proctor from April 7–18. Registration is open for eligible candidates on the ASPE Education website under “2025 CPD Exam Registration.” There is still time to register.

Be well, stay well.

Continued on page 8

# DONALD F. DICKERSON GOLF TOURNAMENT 61<sup>ST</sup> ANNIVERSARY LA CHAPTER

Friday June 20, 2025



Brookside Golf & Country Club  
1133 Rosemont Ave.  
Pasadena, CA 91103 -T: 626-585-3594



**Team Best Ball Format  
Shotgun Start @ 8:00am  
Check in Begins @ 6:00am**

**Sponsorship Opportunities Include:**

**Registration**

**Platinum Level:** \$5000

- Special Recognition at Monthly ASPE Meetings
- 1-year Platinum Level Sponsor AD in ASPE-LA Website [aspela.com](http://aspela.com)
- Banner Recognition
- Three Golf Foursomes
- Ten Hole Sponsor Signs
- Extra Drink Tickets

**Gold Level:** \$2600

- Special Recognition at Monthly ASPE Meetings
- 1-year Gold Level Sponsor AD in ASPE-LA Website [aspela.com](http://aspela.com)
- Banner Recognition
- Two Golf Foursomes
- Six Hole Sponsor Signs
- Extra Drink Tickets

**Silver Level:** \$1800

- Special Recognition at Monthly ASPE Meetings
- 1-year Silver Level Sponsor AD in ASPE-LA Website [aspela.com](http://aspela.com)
- Banner Recognition
- One Golf Foursome
- Four Hole Sponsor Sign
- Extra Drink Tickets

**Bronze Level:** \$1200

- Special Recognition at Monthly ASPE Meetings
- 1-year Bronze Level sponsor AD in ASPE-LA Website [aspela.com](http://aspela.com)
- Banner Recognition
- One Golf Twosome
- Two Hole Sponsor Signs

**Breakfast or Lunch:** \$825

- Special Recognition at Monthly ASPE Meetings
- Banner Recognition
- Two Hole Sponsor Signs

**Beverage Cart:** \$550

- Special Recognition at Monthly ASPE Meetings
- Banner Recognition

Entry Fee: \$400 for 2 players (Minimum)

Foursome Discount Rate: \$750

- Golf w/Cart
- Breakfast and Lunch
- Drink Ticket and Prizes

**Golf Tabletop Hole Sponsor:**  
Limited Availability. **First come first serve \$500**  
(\$400 if combined with any **Level Sponsorship**)

**Golf Hole Sponsor:**  
Includes Signs on Both Courses \$250

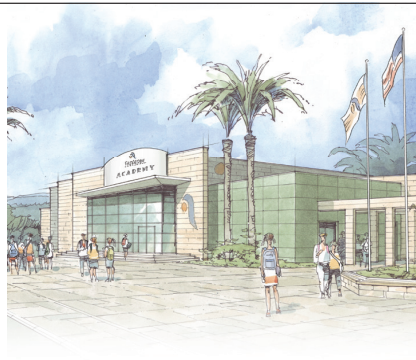
- Custom-designed golf sign/s with your company logo and/or products for all to see. They're yours to keep at the conclusion of the tournament.

**All payments must be received no later than Friday, June 4<sup>th</sup>, 2025!! Receipt of payment is required for registration and/or inclusion in signage. Thank you for your cooperation. Please Note: All advertisements with Sponsorships will begin in our website as soon as sponsor payment is received. Anyone wanting to advertise in the ASPE-LA Newsletter should expect to pay at the beginning of the year.**

<b>Contact Name:</b>		<b>If less than a foursome, we will pair you with others.</b>	
<b>Firm Name:</b>		<b>Player Name</b>	<b>Player Company</b>
<b>Address:</b>		1.	
<b>City/St/Zip:</b>		2.	
<b>Phone:</b>		3.	
<b>E-mail:</b>		4.	
<b>Tabletop:</b>		<b>Player Registration Cost:</b>	\$ _____
<b>Make checks Payable to:</b>	<b>ASPE-LA</b>	<b>Sponsorship Cost:</b>	\$ _____
<b>Send form and checks to:</b>	Thura Zin c/o ARUP 900 Wilshire Boulevard 19 <sup>th</sup> Floor, Los Angeles, CA 90017 T: (213) 944-9178	<b>TOTAL ENCLOSED:</b>	\$ _____

**NOTE: If paying by credit card, please email your completed form to Thura Zin at [vptech.aspela@gmail.com](mailto:vptech.aspela@gmail.com) so the payment can be run on the Square Device. Credit Card Number & Type of Card \_\_\_\_\_ CV# \_\_\_\_\_**  
Expiration Date \_\_\_\_\_, Billing zip code \_\_\_\_\_.

**All proceeds from the tournament will benefit the ASPE Los Angeles Chapter. Reservations will be confirmed by receipt of registration and sponsorship fees.**



## T&S IS HERE >

T&S is proud to be a trusted name across a wide range of markets — staying at the forefront of today's evolving industry and providing a vast selection of reliable solutions that meet required codes and compliances.

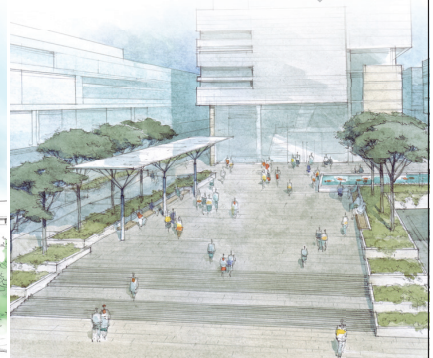
Learn more at [tsbrass.com/markets](http://tsbrass.com/markets).

EDUCATION

HEALTHCARE

PUBLIC VENUES

COMMERCIAL OFFICES



Find us in



T&S plumbing products reresented in So. Cal. by: **Delco Sales 714-888-2444**

## New Representative: Mainline Sales

**One Mission.  
One Focus.  
No Distractions.**

**Emergency equipment isn't just what we do. It's all we do.** Your safety is too important to entrust to just anyone. All Guardian emergency eyewash and shower products are inspected, fully assembled, and 100% water-tested in our Chicago facility, which means you receive the most reliable emergency equipment each time, every time. Your safety isn't just a priority. It's our only priority.

Visit [gesafety.com](http://gesafety.com) to learn more.



**Guardian**

EMERGENCY EYEWASH & SHOWER TECHNOLOGY



Represented by:  
**Mainline Sales**  
(877) 300-9346

## Technical Report

BY Thura Zin CPD, GPD

The ASPE-LA monthly meeting was held on March 12, 2025, at the Courtyard in Burbank. On behalf of the ASPE-LA Board of Directors, we would like to extend our gratitude to Mr. Enrique Gonzalez, Staff Liaison for the Uniform Plumbing Code and Manager of Codes Development at the International Association of Plumbing and Mechanical Officials (IAPMO).

Mr. Gonzalez provided an insightful presentation on the ongoing development of the 2027 Uniform Plumbing Code. He discussed anticipated changes in the upcoming edition and gave an overview of the 2024 Code updates, covering key topics such as General Requirements, Plumbing Fixtures, Water Supply, Sanitary Drainage, Indirect Waste,

Traps and Interceptors, Alternate Water Sources, and Appendices. If you would like a copy of his presentation, please contact us.

We had a great turnout, with 45 members attending the February meeting—thank you to all who participated!

### Upcoming Meeting – April 9, 2025

Our next meeting will be held on April 9, 2025, where Mr. Tim Schroeder, Business Development Manager at Kohler, will present “Commercial Restrooms Reinvented.” This session will cover an introduction to Commercial Restrooms, Industry Trends, and the Restroom of the Future. Don’t miss

**Continued on page 10**



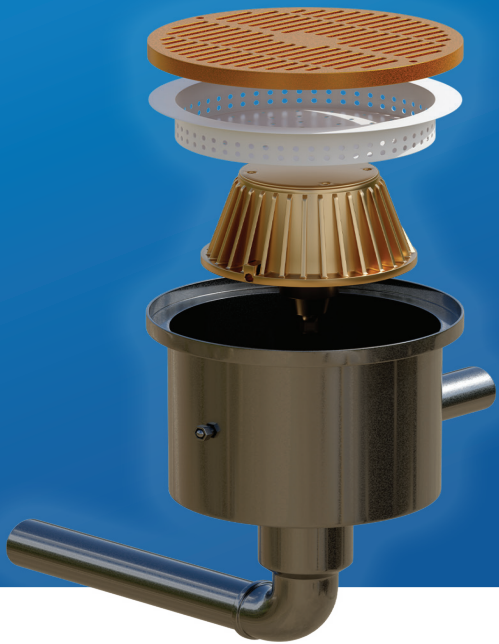


# WASTEWATER DIVERSION SYSTEMS, INC.

## WDS ON DEMAND

Over 45 years Experience | 100% American-Owned and Operated

### BEACH, DECK, POOL SHOWER WATER TRANSFER SYSTEM



For all outdoor showers that need separation of wash water and rainwater.

Automatically transfers wash water to sewer and automatically transfers rainwater to storm drain.



### Model WDS-BDPSWTS

#### The Process

When the shower is activated, the transfer valve in the transfer pit automatically opens, transferring all wash water to the designated treatment of sanitary sewer, holding tank, or oil/ water separator.

When the shower is not in use, the transfer valve is automatically closed. Rainwater will now simply fill the pit and flow out the stormwater outlet.

Specs and drawings available at [eeeusa.net](http://eeeusa.net)



Made in AMERICA



## Jeff Atlas

Territory Sales Manager

**Rinnai America Corporation**  
 103 International Drive | Peachtree City, GA 30269  
 Toll Free: 1-800-621-9419  
 Mobile: 661-456-6682 | Tech Support: 1-888-746-6247  
 E-mail: jatlas@rinnai.us  
 Website: rinnai.us

**Rinnai**



1006 Brighton Court  
 Vacaville, California 95687  
 www.daybreaktech.com

**Brett Barron**  
 SoCal Account Manager  
**C** 714-904-2954  
**P** 707-451-9335  
**F** 707-451-9445

2500 E Imperial Hwy. #201  
 Brea, CA. 92821-6121  
 brett@daybreaktech.com  
**MANUFACTURERS' REPRESENTATIVE**



## Matthew Farrell

1450 Railroad Street  
 Corona, CA 92882-6929  
 WWW.RENCOSALES.COM



office - 800.273.6267  
 fax - 951.371.3635  
 fax - ariz/nev - 877.251.2659  
 cell - 951.339.0153  
 matthewf@rencosales.com

# AT LAST – IT'S ARRIVED!

## Just what you've been waiting for!



Independent third-party performance verification under a US test protocol for a **Physical Water Conditioner** - the alternative to the conventional water softener.

- **AT LOW COST**  
 (You can't afford not to treat hard water anymore)
- **ZERO PLANT ROOM FOOTPRINT**  
 (Attaches to the wall or to pipe work)
- **ZERO SERVICING**  
 (No Salt)
- **ZERO MAINTENANCE**  
 (Which means it is 100% reliable)
- **WARRANTED FOR 20 YEARS**



### Case Study: Panorama Towers, Las Vegas, NV.

Cost to install: **\$55,000** ✓  
 Savings over conventional softener in year one: **\$168,000** ✓  
 Estimated 3-year savings: **\$500,000** ✓  
 Annual Running Costs: **\$200**

Download the Engineer's Specifier Guide from [www.aqua-rex.com](http://www.aqua-rex.com)

Scale Down. Soften Up.



### TEST REPORT

5001 E. Philadelphia Street  
 Ontario, California - USA 91761 - 2816  
 Ph: 909-472-4100 | Fax: 909-472-4243  
<http://www.iapmortl.org>

**Report Number:** 2536-18001-002 **Project No.:** 29225  
**Report Issued:** February 26, 2018.  
**Client:** Aqua-Rex  
 3301 Spring Mountain Road Ste 18  
 Las Vegas, NV 89102 **Contact:** Jonny Seccombe  
**Source of Samples:** The samples were shipped to IAPMO R&T Lab from Aqua-Rex, and received in good condition on October 11, 2017.  
**Date of Testing:** October 25, 2017 through December 15, 2017.  
**Sample Description:** Scale Prevention Device; model: Aqua-Rex WK1-E.  
**Scope of Testing:** The purpose of the testing is to determine the efficacy of the Scale Prevention Device per section 5 of IAPMO IGC 335-2018, entitled "Rapid Scaling Test for Scale Prevention Devices".  
**CONCLUSION:** When tested per Section 5 of IAPMO IGC 335-2018, Aqua-Rex WK1-E reduced scaling by 83% when applied to Las Vegas water heated to 180°F.

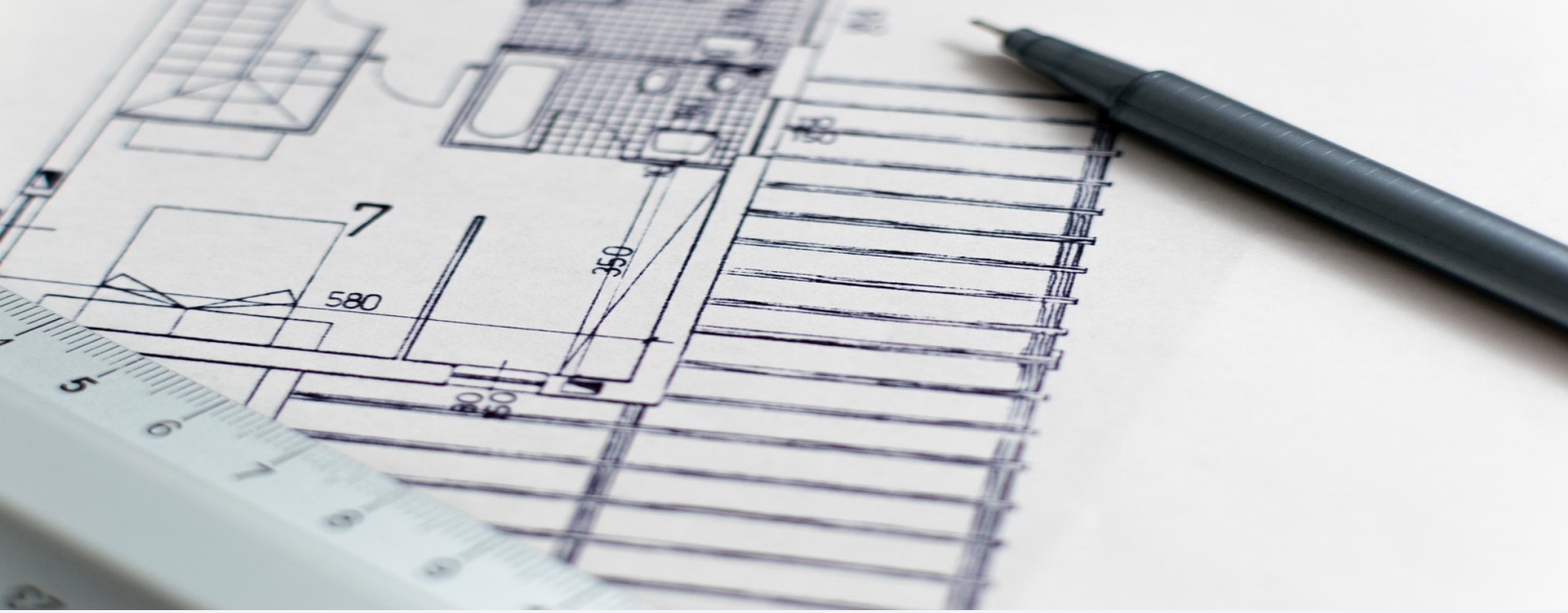
Tested by,

Reviewed by,

*Hanks Ninh*  
 Hanks Ninh, Project Engineer

*Sean Vuu*  
 Sean Vuu, P.E., Manager, Specialty Projects

 <p>Stainless Steel &amp; Terrazzo Plumbing Fixtures</p>	 <p>Portable, surface, and wall mounted hand washing solutions.</p>	<p>ACORN</p>  <p>Thermostatic Mixing Valves &amp; Electronic Tempering Systems.</p>	 <p>Eye Washes, Eye/Face Washes, Emergency Drench Showers, Hoses, &amp; Mixing Valves.</p>
 <p>Vacuum Plumbing Systems for Correctional, Commercial, Water Conservation, and Infection Prevention.</p>	 <p>Polypropylene (PP-R) Pipe for use in pressurized plumbing and mechanical systems of all sizes.</p>	<p>Conex   Bänninger</p>  <p>Refrigeration Copper Press Fitting for VRF Applications.</p>	 <p>Instantaneous Mini Tank &amp; Tankless Electric Water Heater Solutions for Point of Use Applications.</p>
 <p>Energy Efficient Heat Pump Water Heaters for Commercial and Industrial Applications</p>	 <p>Access Panels, Lead Roof Flashings, and Roof Access Hatches.</p>	 <p>Engineered Plumbing &amp; Drainage Products.</p>	 <p>3 PSI Differential Trap Primers, Electronic Trap Primers, Distribution Units, and Water Hammer Arrestors.</p>
 <p>Polypropylene, Polymer Concrete, Stainless Steel, Cast Iron, and Fiberglass Trench Drain Solutions</p>	 <p>Faucets, Tubs, Lavatories, &amp; Accessories for Kitchen and Bathroom Applications.</p>	 <p>Bronze, Brass &amp; Cast Iron Gate, Globe &amp; Check Ball Valves.</p>	 <p>Indoor/Outdoor Drinking Fountains, Water Coolers, Bottle Fillers, &amp; Hand Washing Stations.</p>
 <p>Custom Solutions for Modern Luxury Hospitality and Commercial Restrooms.</p>	 <p>Fire Protection Products.</p>	 <p>Sump, Effluent &amp; Sewage Controls, Engineered Custom Controls, Embedded Controls, Ceramic Filtration Solutions.</p>	 <p>Stainless Steel Surgical Scrub Sinks, Toilets, &amp; Accessories for Health Facilities.</p>



**Continued from page 5**

out on this exciting and informative discussion—come and join us!

### **2025 Golf Tournament – June 20, 2025**

As the chair of our Golf Tournament Committee, I encourage you to consider sponsoring our annual ASPE-LA Golf Tournament, scheduled for Friday, June 20, 2025. Sponsorship opportunities are available, and we invite engineers and contractors to join us for a day of golf and networking.

**Sponsorship details:** Available on our website – Golf Tournament Sponsorship

**Payment update:** We are not yet accepting online payments, but this feature will be available soon.

**Flyer:** Will be shared on the ASPE Los Angeles Chapter’s LinkedIn page.

Mark your calendars and spread the word!

**Continued on page 16**



1450 Railroad Street

Corona, Ca 92882

**RENCO  
SALES**  
INC.

MANUFACTURERS REPRESENTATIVE

WWW.RENCOSALES.COM

Phone: 951-371-8848

Fax: 951-371-3635

**ADVANCED  
AQUADUCK SYSTEMS**

Rectangular under walk drainage pipe and fittings waterheater pans and duck-pullers

WWW.AQUADUCKSYSTEMS.COM

**OASIS**

Since 1910 Water delivery system, Quasar, bottle filler, drinking fountain, retrofit for competing fillers, outdoor wall mount

WWW.OASISCOOLER.COM

**DURA**

**TIGRE**

ABS & PVC fittings, Irrigation, Pool & Spa, Plumbing, Agricultural and many other products.

WWW.DURAPLASTICS.COM

**JOSAM**

A WATTS Brand

Commercial drainage products, stainless steel Push-Fit pipe & fittings, trench drains, stainless steel drains

WWW.JOSAM.COM

**Global Flex Mfg.**

Seismic, Stainless steel, bronze & teflon hose assemblies in size ranging from 1/4" to 12" diameter

WWW.GLOBALFLEXMFG.COM

**Gastite**

Flexible gas corrugated stainless steel tubing, fittings, & accessories

WWW.GASTITE.COM

**GATCO**

FINE BATHWARE

High quality designer bathroom towel bars, mirrors, shower curtain rods and countertop accessories

WWW.GATCO-INC.COM

**McGUIRE**

Plumbing specialty in cast brass p-traps, sink & lavatory drain strainers, Pro Wrap ADA, & heavy supply stops

WWW.MCGUIREMFG.COM

**FIAT  
PRODUCTS**

Specialty products and plumbing fixtures designed for every application, including shower floors, mop basins, pet wash stations and more

WWW.FIATPRODUCTS.COM

**MATCO  
NORCA**

Supplier of globally sourced, code-compliant plumbing & PVF products for use in residential, commercial, & industrial

WWW.MATCO-NORCA.COM

**W  
STERN-WILLIAMS**

Terrazzo mop sinks, shower pans, & outdoor fountains

WWW.STERNWILLIAMS.COM

Commercial, industrial, institutional, food service, electronic, laboratory, & light commercial faucets

**CHICAGO  
FAUCETS**

Geberit Group

WWW.CHICAGOFAUCETS.COM

**Div 22**

Thermostatic mixing valves, Keltech Heaters, Washfountains, Emergency Equipment, Showers, Lavatories, Patient Care, Anti Ligature

**Bradley**

A WATTS Brand

**Div 10**

WWW.BRADLEYCORP.COM

Bathroom Accessories, Partitions Baked Enamel, Phenolic, Euro, Bradmar Plastic, Stainless Steel, Plastic Lockers, Benches and Cubbies

**WOODFORD**



Commercial/Residential wall, roof, & yard hydrants for warm and freezing climates

WWW.WOODFORDMFG.COM

**ISIMET**

Laboratory service panels, utility controllers & solenoids

WWW.ISIMET.COM

**MAPA  
PRODUCTS**

Adjustable nylon based roof supports, Mechanical supports, and tracking

WWW.MAPAPRODUCTS.COM

**WATCO**



Complete line of bath wastes, tub trim kits & lavatory drain accessories

WWW.WATCOMFG.COM



## Shoot 4 Scouts

BY Cory Nakanishi, CPD, FASPE

A heartfelt thank you to all our ASPE members who came out to support this year's fundraiser! The Scouts in Troop 209 in Burbank would also like to give a special shout-out to our amazing prize sponsors for their generous donations:

Jack Dunaway - Anaco-Husky  
Mike Benesek - Mainline Sales  
Adam Haussman - Delco Sales/Watts Water  
Linda Deunay - Enviro Products West  
Matt Farrell - Renco Sales  
Casey Wise - Renco Sales  
John Bianco - Curbolet

Also, Pacific Sporting Arms in Azusa for donating another Beretta A400 12 Gauge

Congrats to all the prize winners!

Best Regards,

Cory Nakanishi, CPD, FASPE  
Chairman Board of Governors





**Mike Brown**

1450 Railroad Street  
Corona, CA 92882-6929

WWW.RENCOSALES.COM

tel - 951.371.8848  
fax - 951.371.3635  
cell - 951.833.2805

mikeb@rencosales.com



**Casey Wise**

1450 Railroad Street  
Corona, CA 92882-6929

WWW.RENCOSALES.COM

tel - 951.371.8848  
fax - 951.371.3635  
cell - 951.532.6109

caseyw@rencosales.com



**WASHINGTON WEEKLY**

**House Rejects Stricter Energy Efficiency Standards for Appliances**



On Thursday, the House voted to repeal stricter energy efficiency standards for walk-in and commercial refrigerators and freezers, part of the GOP’s broader efforts to undo Biden-era clean energy regulations. Republicans argue that these tougher standards would harm small businesses and raise consumer prices, while Democrats contend they would lower energy bills and ease pressure on the energy grid. The measures, which still need Senate approval, reflect ongoing GOP attempts to roll back rules aimed at reducing greenhouse gas emissions. Industry groups also oppose the repeal, citing uncertainty and disruptions to manufacturers.

[For More Information Click Here](#)

**EPA Water Office Nominee to Prioritize Wetlands and PFAS Regulations**



During her Senate confirmation hearing, Jessica Kramer, nominee for the EPA’s assistant administrator overseeing the Office of Water, discussed the agency’s upcoming rulemaking to clarify terms from the Supreme Court’s Sackett v. EPA ruling, particularly defining what constitutes “relatively permanent” wetlands and a “continuous surface connection” to navigable waters. Kramer explained that the rule would address ambiguities to help property owners determine if wetlands on their land qualify as Waters of the U.S. She also highlighted the challenge of addressing PFAS contamination, noting that the EPA is evaluating its tools and seeking input from stakeholders on the issue.

[For More Information Click Here](#)

Continued on page 18

SLOAN®



*DRS120 DropSpot Bottle Filler with Bi-level Cooler in Stainless Steel finish.*

## DropSpot™

Bottle Fillers & Coolers

**Ounce for ounce, a better option for hydration.**

With our new Bottle Fillers and Coolers you can refill on style, safety, and sustainability, delivering fresh drinking water with every sip.



To learn more visit  
[sloan.com/dropspot](https://sloan.com/dropspot)



*DRS100 DropSpot Bottle Filler in Stainless Steel finish.*



*DRS110 DropSpot Bottle Filler with Single-level Cooler in Stainless Steel finish.*

# NEW! 765 Handles with MVP® Metering Cartridge

Concealed  
vandal proof  
hex screw



Contemporary  
durable metal  
handle is ADA  
compliant



External timing  
nut for easy  
adjustment and  
no water shut-off



Sold brass  
actuator



Stainless  
steel sleeve

Large filter screen for  
better performance,  
less maintenance



## Durable and dependable.

An MVP® metering faucet prevents faucet run-on and provides improved hygiene, ease of operation, and increased water conservation. Our new 765 handle features metal construction and vandal resistant design for unmatched dependability.

The adjustable MVP® cartridge allows you to customize the faucet run time to site conditions. This time-tested, patented design is backed by an industry leading 5-year warranty. The MVP® cartridge, combined with a low-flow outlet, can provide significant water savings.

### Proven Performance

Over a quarter of a century of proven market performance, backed by an industry leading 5-year warranty

### Exceptional Operation

Self-closing push button handle provides precise water flow for preset cycle time, large filter screen protects against contaminants

### Easy Adjustment

Easily accessible timing adjustment nut allows timing modification (from 2 to 25 seconds\*) without turning off water supply

### Easy Maintenance

Cartridge designed with a minimal number of moving parts for easy maintenance

## MVP® 765 Handle Products



324 Series



333 Series



339/389 Series



404 Series



405 Series



732 Series



748 Series



770 Series



786 Series



797/802 Series



807/844/857 Series



895 Series

## MVP® 765 Handle Conversion Kits



### Model

### Description

765-RKPABCP

Single handle kit, includes handle, actuator, cartridge, filter

765-RKECOABCP

Double handle kit: handles, actuators, cartridges, filters, 0.5 GPM laminar insert

\*Adjustment range may vary due to a number of factors including incoming water pressure, water temperature, and outlet flow rate. Consult local codes regarding flow rate requirements.

Phone: 847/803-5000 | Fax: 847/803-5454 | Technical: 800/832-8783 | [chicagofaucets.com](http://chicagofaucets.com)



© 2025 The Chicago Faucet Company. Product specifications subject to change without notice.

CF2190 02/25

**RSVP update:** (2) Platinum Sponsors, (1) Gold Sponsor, (5) Silver Sponsors, (4) Tabletops, (2) Foursomes, and (1) Twosome.

## 2025 Product Show & Technical Seminar – August 13, 2025

This year, our ASPE-LA Product Show and Technical Seminar will take place on August 13, 2025.

**Schedule:** Two technical sessions in the morning, followed by the product show after lunch.

**Location:** The Quiet Cannon, 901 Via San Clemente, Montebello, CA 90640 (same venue as 2023).

**Event Leadership:** I will chair the event, with Vahan as Co-Chair.

**Manufacturers & Exhibitors:** We will be reaching out to our manufacturer sales representatives soon.

**Flyer Release:** Coming in May.

Please save the date and join us for this exciting event! Technical session attendees should check our website for updates—we will post the registration form as soon as possible.

## 2025 ASPE Tech Symposium – Orlando, Florida

The 2025 ASPE Technical Symposium will be held at the Rosen Centre Hotel in Orlando, Florida. Stay tuned for more details!

### Get Involved

If there are specific topics you'd like to see covered in future technical programs, please feel free to email any board member with your suggestions. Keep an eye on your inbox for upcoming meeting announcements, and don't forget to check our Technical Calendar for future sessions.

Thank you for your continued participation and support! We look forward to seeing you at our upcoming events.

Stay safe and take care!





PLUMBING GROUP



## Superior Performance & System Reliability

DuRa Pipe™ enhanced epoxy coating applied to cast iron soil pipe and fittings. It is well suited for aggressive DWV applications where greater performance is required.



[ABIFoundry.com](http://ABIFoundry.com)



[Anaco-Husky.com](http://Anaco-Husky.com)



PIPE & COUPLING

[TylerPipe.com](http://TylerPipe.com)



Mainline Sales has over forty years experience as a professional manufacturers' representative firm covering **California, Nevada, Arizona, and Hawaii** :

- Plumbing (Residential & Commercial)
- Mechanical
- Fire Protection
- Industrial
- Irrigation
- Waterworks (Water & Sewer).

Mainline Sales operates **(6)** distribution centers and **(7)** offices strategically located in **Anaheim, San Diego, The Bay, Sacramento, Las Vegas, Phoenix, and Hawaii** which are supported by a seasoned staff of professionals that are dedicated to satisfying the value chain (specifiers, architects, builders, contractors, municipalities and distributors) from the initial specification through the final shipment, and after-market service of installed product.

We believe in delivering superior results for the manufacturers we have the honor of representing, by supporting our strategic relationships with the best people, systems, and analytics.

Anaheim Headquarters  
659 E. Ball Road | Anaheim, CA 92805

Customer Care (877) 300-9346  
cs@mlsalesinc.com | www.mlsalesinc.com

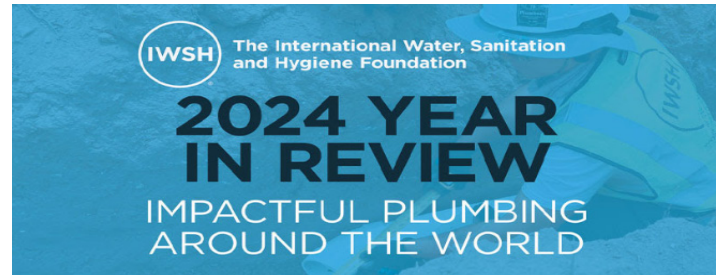
### IAPMO Unveils Peak Water Demand Study: Comprehensive Report and the Future of Efficient Plumbing Design



IAPMO has released the Peak Water Demand Study: Full Study, offering a data-driven approach to optimizing water supply system sizing in residential and multi-family buildings. The study, based on data from more than 1,000 households, demonstrates how right-sizing plumbing systems can reduce water waste, construction costs, and health risks, while also cutting down on energy bills. The study introduces IAPMO's Water Demand Calculator, a tool designed to more accurately predict peak water demand, thereby improving efficiency and sustainability in building design.

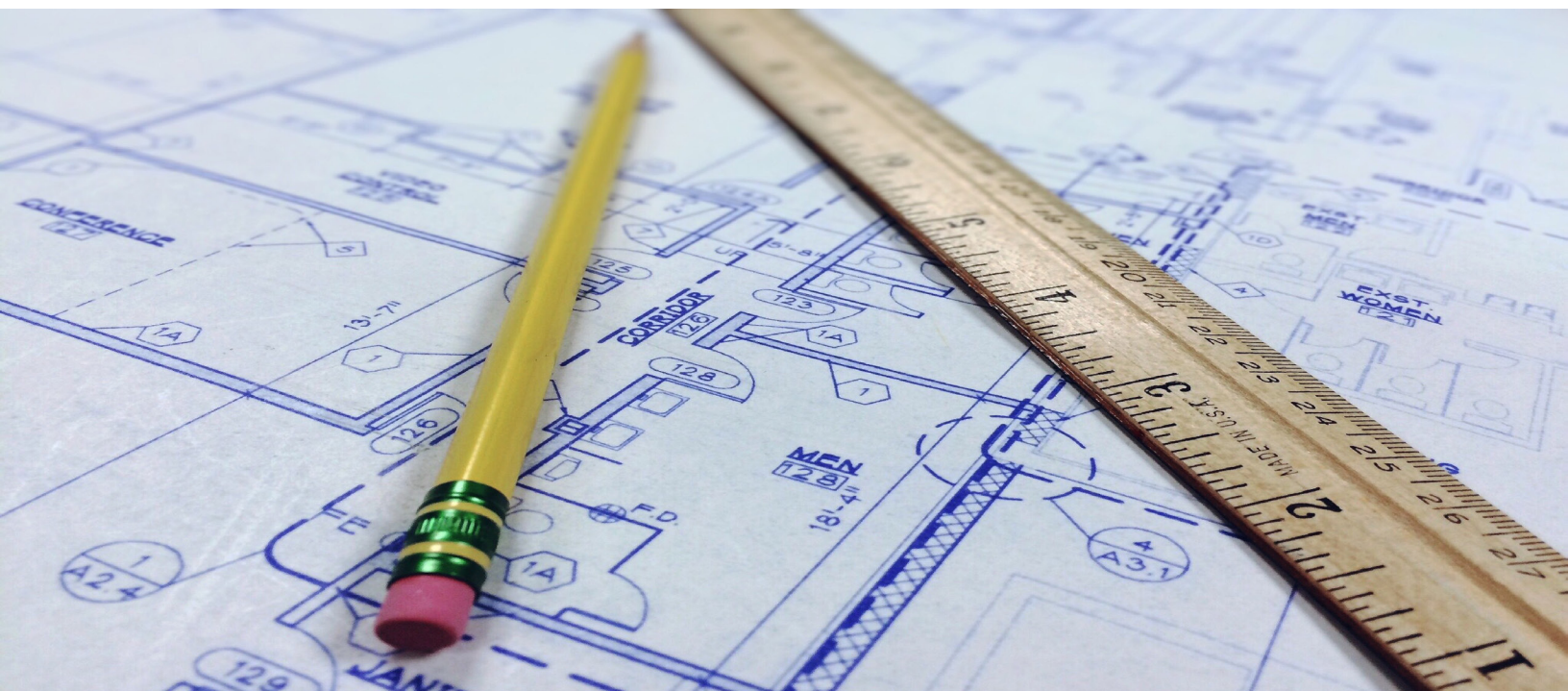
[For More Information Click Here](#)

### Experts Convene at Forum to Discuss the Future of Water Reuse



On Feb. 27, more than 100 professionals gathered in El Paso for the groundbreaking of the Pure Water Center, a facility that will turn treated wastewater into fresh drinking water. The event coincided with the Future of Water Reuse Forum, where experts discussed the challenges and opportunities of water reuse, including regulatory hurdles, technology advancements, and the need for transparency in monitoring water quality. As El Paso sets the stage for water reuse, panelists also addressed future trends, such as the growth of industrial and agricultural water reuse, and the importance of continued research and funding to support the industry.

[For More Information Click Here](#)



# Rinnai® REHP SERIES™

## Electric Heat Pump Water Heater

### Technology and Comfort Combined

Rinnai now offers one of the most efficient and sustainable residential water heating solutions available, the Rinnai Electric Heat Pump Water Heater (REHP). The REHP delivers consistent hot water by extracting heat from the surrounding air and converting it to hot water while producing zero emissions.

When you install the REHP in your home, you are assured of meeting the highest efficiency standards and reduced energy usage and costs.

### Product Highlights

#### Efficiency

- Energy Star® 5.0
- UEF of 3.75/50 GL and 4.0/80 GL
- Meets the highest level of Builder efficiency standards
  - Only Builder model with CTA-2045
  - Title 24 Compliant
- Meets the highest level of federal and state rebate requirements
  - IRA (45L) tax credit eligible
- NEEA Tier 4
- High Cool Climate Efficiency (CCE)

#### Performance

- Designed with variable speed fan for whisper quiet operation
- Wide Operating Range as low as 37°F - 109°F
- Designed with a Micro Channel Heat Exchanger Condenser to optimize the heat transfer and enhance energy savings for best in class recovery rate
- 4.5 KW back up elements for extra comfort
- Demand-Response Enabled- Save money by reducing energy usage during peak demand






#### Installation and Serviceability

- Zero Clearance- Gain back net living space with less install footprint for flexible installation
- Installs as easily as an electric water heater
- Easy troubleshooting and serviceability
- Duct ready to install in tight spaces



5 Operating Modes to meet any hot water demand



Part #	Included Accessories	
107000677	T&P Valve	
107000674	Drainage Pipe	
107000678	Drain Valve	
Part #	Optional Accessories	
103000120	EHPWH Ducting Kit	
103000119	EHPWH Leak Sensor Valve	

**Rinnai.** Learn more at [rinnai.us](http://rinnai.us)

[rinnai.us](http://rinnai.us) | [rinnai.ca](http://rinnai.ca)

Rinnai America Corporation | 103 International Drive | Peachtree City, Georgia 30269 | [rinnai.us](http://rinnai.us) | [rinnai.ca](http://rinnai.ca) | 1-800-621-9419



PROUD SPONSOR



Official Water Heater of Stewart-Haas Racing and Tony Stewart Racing

FOLDS OF HONOR

2024166

Copyright 2024 Rinnai America Corporation. All rights reserved. Rinnai® and Creating a healthier way of living® are registered trademarks of Rinnai Corporation used under license by Rinnai America Corporation. Rinnai Electric Heat Pump Water Heater™ and Every Detail Matters™ are the trademarks of Rinnai America Corporation. Rinnai America Corporation continually updates materials, and as such, content is subject to change without notice.

2/2024

# Your Premier Providers of Life, Property and Asset Protection Solutions

## CLEAN AGENT FIRE SUPPRESSION

Our fire protection specialists bring you the finest in fire protection, including the most cost effective to the most environmentally green products available. Fike's **ECARO-25**<sup>®</sup> (using DuPont™ FE-25™ as the fire-extinguishing agent) is the best, most cost-effective clean agent system available. We offer a full line of leading-edge systems for a variety of applications:

- Cost-Effective Clean Agent Systems
- Green Inert Gas Systems
- Drop-in Halon Replacement
- In Cabinet / Small-Space Protection
- CO<sub>2</sub> Systems



## FIRE ALARM AND LIFE SAFETY

Our code-compliant fire alarm systems with specialty detection utilize high quality equipment from industry-leading manufacturers. We have extensive experience in projects from small commercial buildings, to large high-rise facilities, to sprawling industrial complexes. Our NICET certified sales team, designers, project managers, and technicians strive to exceed our client expectations.



- Addressable, Conventional, and Networked Fire Alarm Systems
- Voice Evacuation
- Linear Heat Detection
- Air Sampling
- Pre-action Sprinkler Detection & Control



## EMERGENCY POWER SHUTDOWN MANAGEMENT SYSTEM (EPSMS)

Fike's Emergency Power Shutdown Management System (EPSMS) is designed to consolidate and control equipment emergency power off in a timely, efficient and coordinated manner. EPSMS is used in many applications to:

- De-energize equipment during a fire
- Close fire dampers and turn off HVAC to contain fire and maintain proper concentration of fire suppressant
- Safely shutdown equipment during a flood or sprinkler system discharge
- Help protect fire department personnel from electrocution when fighting a fire



Call today for your life safety evaluation.



FACILITIES PROTECTION SYSTEMS

714-257-2244

[www.fpsys.com](http://www.fpsys.com)



925-484-3701

[www.gotoitsi.com](http://www.gotoitsi.com)

**American Society of Plumbing Engineers**

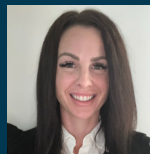
**Officers - Board of Directors**

Published by American Society of Plumbing Engineers, Los Angeles Chapter  
www.aspela.com // news.aspela.com

Over fifty years of dedication to the health and safety of the Southern California Community.  
A non-profit corporation. Local chapters do not speak for the society.



**President**  
**VAHAN MARGARYAN, CPD,**  
**GPD**  
**ARUP**  
(310) 422-7425  
vahan.margaryan@arup.com



**Corresponding Secretary**  
**CASEY WISE**  
**Renco Sales, Inc.**  
(951)532-6109  
caseyw@rencosales.com



**Editor**  
**MATT FARRELL**  
**Renco Sales, Inc.**  
(951)339-0153  
news.aspela@gmail.com



**Vice President Technical**  
**THURA ZIN CPD, GPD**  
**ARUP**  
(310) 650-7734  
thurazin53@gmail.com



**Treasurer**  
**EDGAR OCHOA**  
**Southcoast Engineering**  
**Group**  
(818) 224-2700  
eochoa@sceginco.com



**Women of ASPE Region 4**  
**Liaison**  
**LINDA DEUNAY**  
**Enviro Products West**  
(818) 687-6910  
linda@epwest.com



**Vice President Legislative**  
**AMIR TABAKH**  
**LADWP**  
amir.tabakh@ladwp.com



**Administrative Secretary**  
**JEFF ATLAS**  
**Rinnai**  
(661) 478-4565  
aspeneews@gmail.com



**Chapter Affiliate Liaison:**  
**GUILLERMO NEGRON**  
**Lixil**  
giullermo.negron@lixil.com



**Vice President Membership**  
**GABRIEL STARKMAN**  
**DeltaQ**  
gabriel@deltaqinc.com



**Chairman Board of**  
**Governors**  
**COREY NAKANISHI**  
**PBS Engineers, Inc.**  
cnakanishi@pbsengineers.com