

ASPELA TIMES

The News of the Los Angeles Chapter of The American Society of Plumbing Engineers

www.aspela.com

December 2024

Volume 24 XII

PRESIDENT'S REPORT **Vahan Margaryan CPD, GPD** **President**



Hello, fellow ASPE LA members,

I hope this message finds you all doing well.

As you're reading this, it's my final report for 2024. Hasn't this year flown by incredibly quickly? Let's take a moment to summarize ASPE LA's activities—together, we've achieved so much this year:

In January 2024, we hosted a well-attended and joyous ASPE LA Holiday Party.

We organized May's ASPE LA meeting at LADWP's La Kretz Innovation Campus.

In June, we conducted a very successful ASPE LA annual Donald F. Dickerson Golf Tournament with nearly 200 participants.

please continue reading on page 17

Starting from June, we are moving our monthly meeting from the first Wednesday of the month to the second Wednesday of the month.

December Meeting

Date: **December 11th**

Time: **5:30pm Check In**

Place: **Courtyard by Marriott Burbank**
2100 W. Empire Ave,
Burbank
CA 91504

Program: **"A New Look at Appendix M- R1/R2 Pipe Sizing and Possible Side Effects"**

By Dr. Saum Nour, ASPE Fellow PE Civil, PE Electrical, PE Mechanical, CPD, CFPE, LEED AP, LEED GA, LEED AP O+M, AB 802 President and Founder Absolute Consulting Engineers

Table Top: **Weil Aquatronics**

See inside for Details...



Calendar Events:

- ASPE LA Holiday Party - January 18th
- Shoot 4 Scouts - March 22nd

inside...

President's Report
December Meeting Flyer
Technical Report
Holiday Party

page 1
page 2
page 6
page 7

BIM/CADD Classes
Shoot 4 Scouts

page 10
page 15



AMERICAN SOCIETY OF PLUMBING ENGINEERS LOS ANGELES CHAPTER

December 11th, 2024, Meeting

“A New Look at Appendix M- R1/R2 Pipe Sizing and Possible Side Effects”

By Dr. Saum Nour, ASPE Fellow

PE Civil, PE Electrical, PE Mechanical, CPD, CFPE, LEED AP, LEED GA, LEED AP O+M,
AB 802

President and Founder
Absolute Consulting Engineers

WHAT YOU WILL LEARN:

The presentation will cover the following topics, with time for questions:

- History: Appendix A and Hunter’s Curve
- No question: Appendix A is oversized.
- Appendix M and Example
- Engineers’ Liability vs Code Liability
- Can Cities accept this very low values.
- Is this a Risk?
- Can Code Simply take all the liabilities?
- This discussion must take place now.
- Come and Discuss this with ASPE LA

MEETING LOCATION:

In Person:

*COURTYARD BY MARRIOTT BURBANK
2100 W EMPIRE AVE, BURBANK, CALIFORNIA 91504*

MEETING SCHEDULE:

5:30 pm – Check in

6:30 pm – 7:30 pm – Presentation

COST: Pay at door only

Meeting Fee:

RSVP - \$55 and Retired BOD: \$30

Without RSVP - \$60

RSVP Online:

[RSVP](#)

By: December 1st, 2024

THE SPEAKER:



Dr Saum Nour, Lecturer, author, professor, LEED O+M, and professional engineer practicing in 30 States, has over 37 years of experience in the field of Engineering. His diversified work includes small building projects to large industrial facilities, for which he designed and specified a variety of equipment solutions and systems, performed construction support and multi-discipline coordination tasks. He has done extensive work on commercial and residential projects, where he has designed: structural piping support, piping system, fluid flow, energy compliance, quality control, and plumbing systems.

Dr. Saum Nour's deep knowledge of the industry, constant pursuit of education and willingness to help others learn has nabbed him the award for PM Engineer’s 2022 Plumbing Engineer of the Year. He is active member of multiples committees at ASPE.

If you have additional questions or needed information on his presentation, you can reach him at: snour58@gmail.com

For more information, visit our website
[@www.aspe.com](http://www.aspe.com).

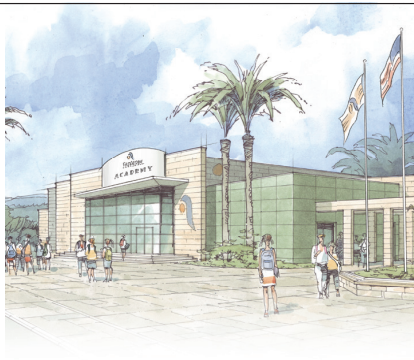


T&S IS HERE >

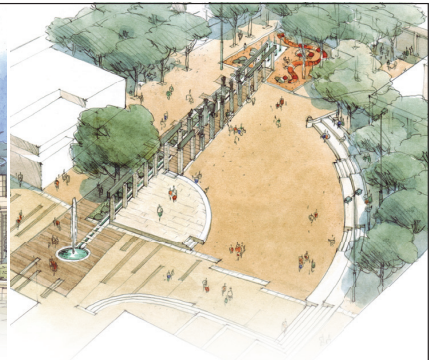
T&S is proud to be a trusted name across a wide range of markets — staying at the forefront of today's evolving industry and providing a vast selection of reliable solutions that meet required codes and compliances.

Learn more at tsbrass.com/markets.

Find us in



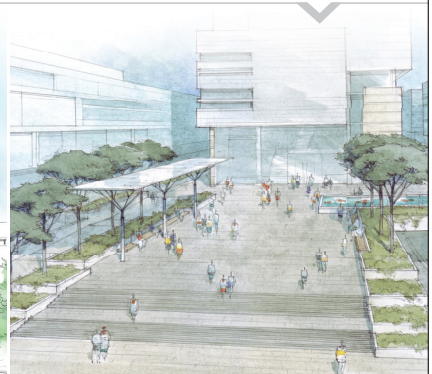
EDUCATION



PUBLIC VENUES



HEALTHCARE



COMMERCIAL OFFICES

T&S plumbing products reserented in So. Cal. by: **Delco Sales 714-888-2444**



Casey Wise

1450 Railroad Street
Corona, CA 92882-6929

WWW.RENCOSALES.COM

tel - 951.371.8848
fax - 951.371.3635
cell - 951.532.6109

caseyw@rencosales.com



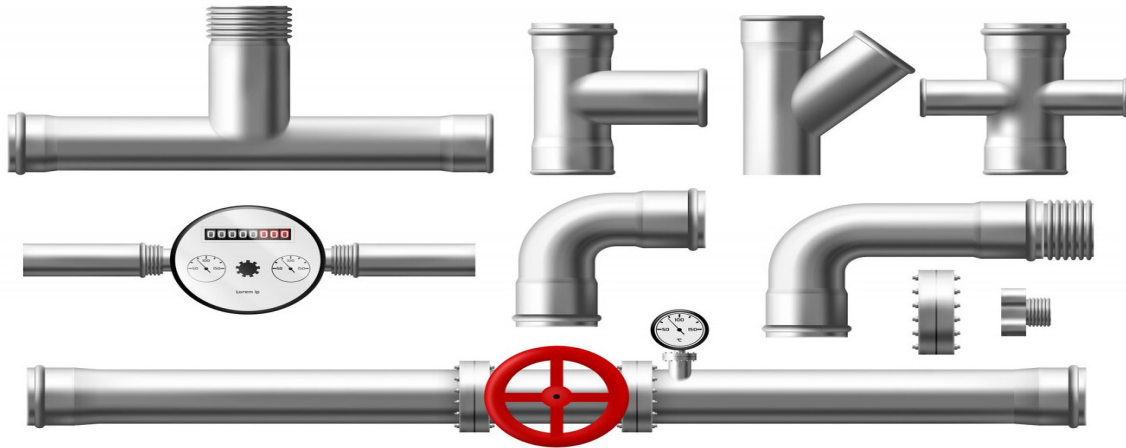
Mike Brown

1450 Railroad Street
Corona, CA 92882-6929

WWW.RENCOSALES.COM

tel - 951.371.8848
fax - 951.371.3635
cell - 951.833.2805

mikeb@rencosales.com



**New Representative:
Mainline Sales**

**One Mission.
One Focus.
No Distractions.**

Emergency equipment isn't just what we do. It's all we do. Your safety is too important to entrust to just anyone. All Guardian emergency eyewash and shower products are inspected, fully assembled, and 100% water-tested in our Chicago facility, which means you receive the most reliable emergency equipment each time, every time. Your safety isn't just a priority. It's our only priority.

Visit gesafety.com to learn more.



Guardian

EMERGENCY EYEWASH & SHOWER TECHNOLOGY



Represented by:

Mainline Sales

(877) 300-9346

On-Demand Pollution Solutions

On-Demand Products for Automatically Diverting Wash Water to Sewer and Rainwater to the Storm Drain.



WDS 4 x 4 Washwater Diversion System



Simple Ingenious solutions for outdoor wash down

The System Includes: One Lead Free Brass Demand Valve, One Lead Free Brass Diversion Valve, One HD Fiberglass Pit w/ First Flush Baffle, One SS Silt and Solids Basket, One H2O Cast Iron ADA Grate & Frame.

The Purpose: To automatically send Wash Water to Sanitary Sewer & Clean Rainwater to the Storm Drain while Capturing Free Floating Pollutants in Pit during the First Flush of a Rain event.

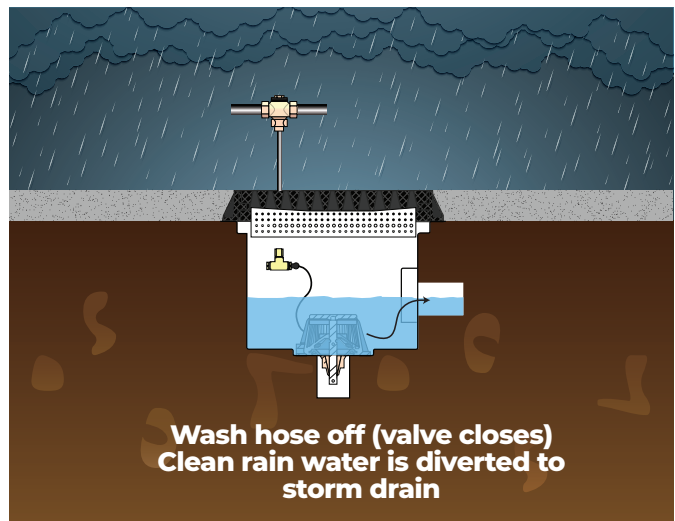
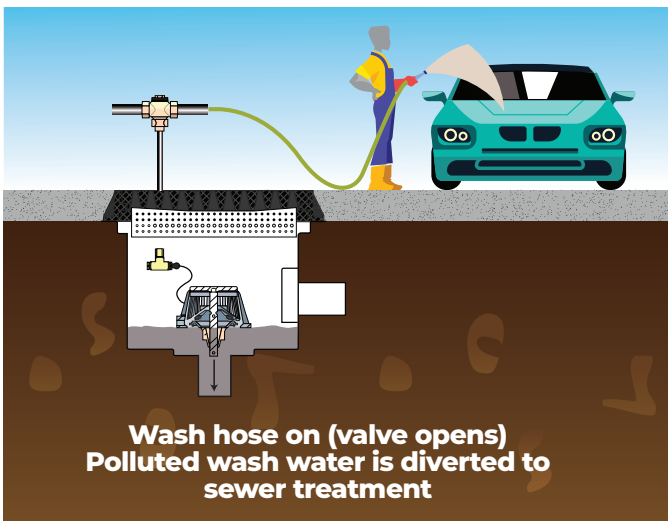
The operation: Our Demand Valve receives a Hydraulic Signal from the Wash Pad Faucet to send water down the Drive Line to open the Pit mounted Diversion Valve and direct wash water to Sewer.

At the end of a wash cycle & loss of the Hydraulic signal at the Demand valve, water will cease going down the drive line and the Diversion Valve will automatically close sealing the sewer entrance from rainwater.



Against Defects in Materials or Workmanship
Tested & complies with applicable requirements of IGC234-2016

Automatically Send Washwater to Sewer and Clean Water to Storm Drain Treat Washwater, NOT Clean Rain Water



Proudly Made in America Visit: eeusa.net/wastewater-diversion-systems
foxwwdsusa@aol.com or call 804 730 1280

TECHNICAL REPORT

Thura Zin CPD, GPD

V.P. Technical

On behalf of the ASPE-LA officers, I would like to extend special thanks to Mr. Adam Haussman, Account Manager at Design & Specification Delco Sales. Adam graciously stepped in at the last minute to present when our scheduled speaker, Ms. Priyanka Chand, was unable to attend due to a health issue. We look forward to having Ms. Chand present her topic next year.

Adam gave an engaging presentation on wireless water leak detection systems for commercial applications. It was a very interesting topic, highlighting how early detection can significantly reduce repair costs for building owners. If you have any questions or would like to discuss further, please feel free to contact Mr. Haussman at ahaussman@delcosales.com.

We had 36 attendees at the November meeting.

Upcoming Meeting – December 9, 2024

We're excited to announce that Dr. Saum Nour, ASPE

Fellow and President/Founder of Absolute Consulting Engineers, will present on the UPC Appendix M – R1/R2 Pipe Sizing and Potential Side Effects. While not all building and safety jurisdictions have adopted the water demand calculator and Appendix M yet, it is likely to become more widely adopted in the future. This will be a valuable session for those looking to stay ahead of these developments.

ASPE Connect

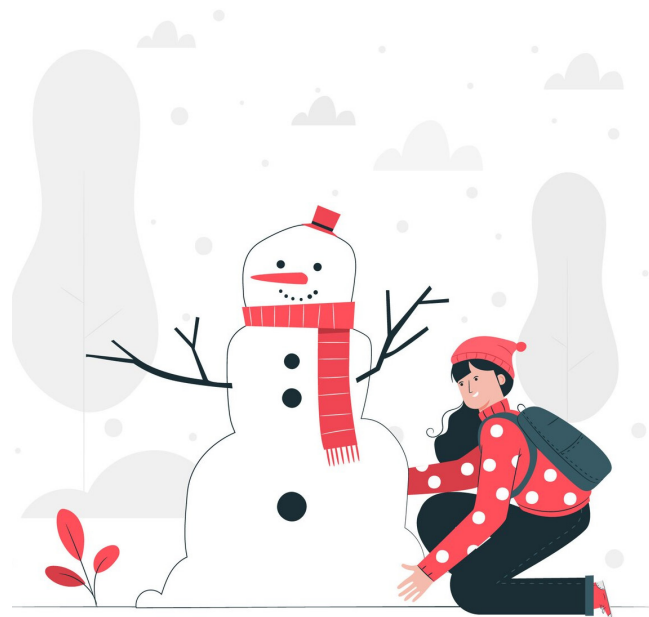
ASPE Connect is a fantastic resource for members to collaborate and learn. It's an exclusive online community for plumbing engineers and designers where members can share knowledge, brainstorm ideas, seek design advice, and build connections.

I highly recommend joining the online communities available, such as the ASPE Open Forum, Fire Protection Topic Community, Medical Gas Topic Community, and many more. Here's the link to get started: <https://connect.aspe.org/home>.

ASPE Education

Another great resource is ASPE Education Home, which offers a variety of learning opportunities, including on-demand webinars, CEU courses, and

please continue reading on page 12





JOIN ASPE LA FOR OUR
Holiday Party

18 JANUARY 2025 | 6 PM
BELLEZZA BANQUET HALL
11009 BURBANK BLVD #112, NORTH HOLLYWOOD
RSVP VAHAN.MARGARYAN@ARUP.COM BY 1/6/25

UNLIMITED FOOD AND DRINKS
LIVE ENTERTAINMENT

PRICE-\$120 FOR YOU AND YOUR SIGNIFICANT OTHER
FREE VALET PARKING





Anne Yardley
 ayardley@elmcostewart.com

 <p>Stainless Steel & Terrazzo Plumbing Fixtures</p>	 <p>Portable, surface, and wall mounted hand washing solutions.</p>	 <p>Thermostatic Mixing Valves & Electronic Tempering Systems.</p>	 <p>Eye Washes, Eye/Face Washes, Emergency Drench Showers, Hoses, & Mixing Valves.</p>
 <p>Vacuum Plumbing Systems for Correctional, Commercial, Water Conservation, and Infection Prevention.</p>	 <p>Polypropylene (PP-R) Pipe for use in pressurized plumbing and mechanical systems of all sizes.</p>	 <p>Refrigeration Copper Press Fitting for VRF Applications.</p>	 <p>Instantaneous Mini Tank & Tankless Electric Water Heater Solutions for Point of Use Applications.</p>
 <p>Energy Efficient Heat Pump Water Heaters for Commercial and Industrial Applications</p>	 <p>Access Panels, Lead Roof Flashings, and Roof Access Hatches.</p>	 <p>Engineered Plumbing & Drainage Products.</p>	 <p>3 PSI Differential Trap Primers, Electronic Trap Primers, Distribution Units, and Water Hammer Arrestors.</p>
 <p>Polypropylene, Polymer Concrete, Stainless Steel, Cast Iron, and Fiberglass Trench Drain Solutions</p>	 <p>Faucets, Tubs, Lavatories, & Accessories for Kitchen and Bathroom Applications.</p>	 <p>Bronze, Brass & Cast Iron Gate, Globe & Check Ball Valves.</p>	 <p>Indoor/Outdoor Drinking Fountains, Water Coolers, Bottle Fillers, & Hand Washing Stations.</p>
 <p>Custom Solutions for Modern Luxury Hospitality and Commercial Restrooms.</p>	 <p>Fire Protection Products.</p>	 <p>Sump, Effluent & Sewage Controls, Engineered Custom Controls, Embedded Controls, Ceramic Filtration Solutions.</p>	 <p>Stainless Steel Surgical Scrub Sinks, Toilets, & Accessories for Health Facilities.</p>

SLOAN®



DRS120 DropSpot Bottle Filler with Bi-level Cooler in Stainless Steel finish.

DropSpot™

Bottle Fillers & Coolers

Ounce for ounce, a better option for hydration.

With our new Bottle Fillers and Coolers you can refill on style, safety, and sustainability, delivering fresh drinking water with every sip.



To learn more visit sloan.com/dropspot



DRS100 DropSpot Bottle Filler in Stainless Steel finish.



DRS110 DropSpot Bottle Filler with Single-level Cooler in Stainless Steel finish.

State-Funded Online CADD/BIM Training Schedule

If interested in any of the below courses please contact Barry Maleki at (949) 393-8866, barry@ach.edu, or barry@westech.edu for registration.

Online Training

Live Instructor (Virtual) / Interactive

Location: Online

Class: Revit (MEP)

Day: Monday & Wednesday

Time: 5:30 pm - 9:30 pm

Meeting Dates: *August- 26, 28 *September- 4, 9, 11, 16, 18, 23, 25, 30 *October- 2, 7, 9, 14, 16, 21, 23, 28, 30 *November- 4, 6, 11, 13, 18, 20



Location: Online

Class: Enhanced Revit

Day: Tuesday & Thursday

Time: 5:30 pm - 9:30 pm

Meeting Dates: *August- 27, 29 *September- 3, 5, 10, 12, 17, 19, 24, 26 *October- 1, 3, 8, 10, 15, 17, 22, 24, 29 *November- 5, 7, 12, 14, 19, 21

Location: Online

Class: Revit Architecture

Day: Tuesday & Thursday

Time: 5:30 pm - 9:30 pm

Meeting Dates: *August- 27, 29 *September- 3, 5, 10, 12, 17, 19, 24, 26 *October- 1, 3, 8, 10, 15, 17, 22, 24, 29 *November- 5, 7, 12, 14, 19, 21

Location: Online

Class: Civil 3D

Day: Tuesday & Thursday

Time: 5:30 pm - 9:30 pm

Meeting Dates: *August- 27, 29 *September- 3, 5, 10, 12, 17, 19 *October- 22, 24, 29 *November- 5, 7, 12, 14, 19, 21, 26 *December- 3, 5, 10, 12, 17, 19

Location: Online

Class: BlueBean

Day: Tuesday & Thursday

Time: 5:30 pm - 8:30 pm

Meeting Dates: *August- 27, 29 *September- 3, 5, 10, 12, 17, 19, 24, 26 *October- 1, 3, 8, 10, 15, 17, 22, 24, 29 *November- 5

Location: Online

Class: Revit (Structure)

Day/Time: Friday (5:30-9:30 pm) Saturday (8 am-12 pm)

Meeting Dates: *August- 30, 31 *September- 6, 7, 13, 14, 20, 21, 27, 28 *October- 4, 5, 11, 12, 18, 19, 25, 26 *November- 1, 2, 8, 9, 15, 16, 22

Location: Online

Class: AutoCAD

Day/Time: Friday (5:30-9:30 pm) Saturday (8 am-12 pm)

Meeting Dates: *August- 30, 31 *September- 6, 7, 13, 14 *October- 18, 19, 25, 26 *November- 1, 2, 8, 9, 15, 16, 22, 23 *December- 6, 7, 13, 14, 20, 21

**Schedule is subject to change



Mainline Sales has over forty years experience as a professional manufacturers' representative firm covering **California, Nevada, Arizona, and Hawaii** :

- Plumbing (Residential & Commercial)
- Mechanical
- Fire Protection
- Industrial
- Irrigation
- Waterworks (Water & Sewer).

Mainline Sales operates **(6)** distribution centers and **(7)** offices strategically located in **Anaheim, San Diego, The Bay, Sacramento, Las Vegas, Phoenix, and Hawaii** which are supported by a seasoned staff of professionals that are dedicated to satisfying the value chain (specifiers, architects, builders, contractors, municipalities and distributors) from the initial specification through the final shipment, and after-market service of installed product.

We believe in delivering superior results for the manufacturers we have the honor of representing, by supporting our strategic relationships with the best people, systems, and analytics.

Anaheim Headquarters
659 E. Ball Road | Anaheim, CA 92805

Customer Care (877) 300-9346
cs@mlsalesinc.com | www.mlsalesinc.com

Continued from page 6

“Read-Learn-Earn Articles.” If you have questions or need help navigating these resources, please don’t hesitate to contact me. I’d be happy to assist. Visit ASPE Education here: <https://education.aspe.org/>.

As always, if you have suggestions for topics you’d like to see covered in our technical programs, please email any board member. Keep an eye on your inbox for updates on the next meeting, and be sure to check our Technical Calendar for upcoming sessions.

Take care of yourselves and each other. Stay safe, and I look forward to seeing you at the next meeting!



Jeff Atlas

Territory Sales Manager

Rinnai America Corporation

103 International Drive | Peachtree City, GA 30269
Toll Free: 1-800-621-9419
Mobile: 661-456-6682 | Tech Support: 1-888-746-6247
E-mail: jatlas@rinnai.us
Website: rinnai.us




KIMAX® Glass Drain and Vent Systems

- Sustainable**
Low VOC’s, no offgassing 
- Durable**
Maximum corrosion resistance 
- Flexible**
Easy to install 
- Economical**
Lowest life-cycle costs 
- BIM**
BIM Objects available 

Your Local Distributor
The George Yardley Company
1-714-241-7700
rob@georgeyardley.com

SCHOTT North America, Inc.
info.drainline@us.schott.com
us.schott.com/drainline

SCHOTT
glass made of ideas



DAYBREAK TECHNOLOGIES INC

1006 Brighton Court
Vacaville, California 95687
www.daybreaktech.com

Brett Barron
SoCal Account Manager
C 714-904-2954
P 707-451-9335
F 707-451-9445

2500 E Imperial Hwy. #201
Brea, CA. 92821-6121
brett@daybreaktech.com
MANUFACTURERS' REPRESENTATIVE



MANUFACTURERS REPRESENTATIVE




MANUFACTURERS REPRESENTATIVE



Matthew Farrell
1450 Railroad Street
Corona, CA 92882-6929
WWW.RENCOSALES.COM

office - 800.273.6267
fax - 951.371.3635
fax - ariz/nev - 877.251.2659
cell - 951.339.0153
matthewf@rencosales.com

Brian Wright
1450 Railroad Street
Corona, CA 92882-6929
WWW.RENCOSALES.COM

tel - 951.371.8848
fax - 951.371.3635
cell - 818.518.0688
brianw@rencosales.com

AT LAST - IT'S ARRIVED!

Just what you've been waiting for!



Independent third-party performance verification under a US test protocol for a Physical Water Conditioner - the alternative to the conventional water softener.

- **AT LOW COST**
(You can't afford not to treat hard water anymore)
- **ZERO PLANT ROOM FOOTPRINT**
(Attaches to the wall or to pipe work)
- **ZERO SERVICING**
(No Salt)
- **ZERO MAINTENANCE**
(Which means it is 100% reliable)
- **WARRANTED FOR 20 YEARS**




Case Study: Panorama Towers, Las Vegas, NV.



Cost to install: **\$55,000** ✓
Savings over conventional softener in year one: **\$168,000** ✓
Estimated 3-year savings: **\$500,000** ✓
Annual Running Costs: **\$200**

Download the Engineer's Specifier Guide from www.aqua-rex.com

Scale Down. Soften Up.

TEST REPORT
5001 E. Philadelphia Street
Ontario, California - USA 91761 - 2816
Ph: 909-472-4100 | Fax: 909-472-4243
<http://www.iapmort.com>

Report Number: 2536-18001-002 Project No.: 29225
Report Issued: February 26, 2018.
Client: Aqua-Rex 3301 Spring Mountain Road Ste 18 Las Vegas, NV 89102 Contact: Jonny Seccombe
Source of Samples: The samples were shipped to IAPMO R&T Lab from Aqua-Rex, and received in good condition on October 11, 2017.
Date of Testing: October 25, 2017 through December 15, 2017.
Sample Description: Scale Prevention Device; model: Aqua-Rex WK1-E.
Scope of Testing: The purpose of the testing is to determine the efficacy of the Scale Prevention Device per section 5 of IAPMO IGC 335-2018, entitled "Rapid Scaling Test for Scale Prevention Devices".
CONCLUSION: When tested per Section 5 of IAPMO IGC 335-2018, Aqua-Rex WK1-E reduced scaling by 83% when applied to Las Vegas water heated to 180°F.
Tested by, Reviewed by,

Hanks Ninh, Project Engineer

Sean Vuu, P.E., Manager, Specialty Projects



PLUMBING GROUP



Superior Performance & System Reliability

DuRa Pipe™ enhanced epoxy coating applied to cast iron soil pipe and fittings. It is well suited for aggressive DWV applications where greater performance is required.



SHOOT 4 SCOUTS

BENEFITING TROOP 209 BURBANK

SAT, MARCH 22, 2025

THIS EVENT IS HOSTED BY

\$160
PER PERSON



ENTRY FEE INCLUDES

NCSA REGISTERED
100 CLAYS, 100 SHOT SHELLS
(AMMO) BBQ LUNCH, EAR & EYE
PROTECTION, LOANER SHOTGUNS
ARE AVAIL IF NEEDED. WE'LL EVEN
THROW IN A GREAT TIME!

RAFFLE DRAWING

**BERETTA A400 SEMI-AUTO
SHOTGUN SPORTING CLAYS
LESSONS SHOOTING
ACCESSORIES AND CLOTHING**



Scan me!

SIGN UP NOW!

MOORENMOORE.COM/SHOOT-4-SCOUTS



Your Premier Providers of Life, Property and Asset Protection Solutions

CLEAN AGENT FIRE SUPPRESSION

Our fire protection specialists bring you the finest in fire protection, including the most cost effective to the most environmentally green products available. Fike's **ECARO-25**® (using DuPont™ FE-25™ as the fire-extinguishing agent) is the best, most cost-effective clean agent system available. We offer a full line of leading-edge systems for a variety of applications:

- Cost-Effective Clean Agent Systems
- Green Inert Gas Systems
- Drop-in Halon Replacement
- In Cabinet / Small-Space Protection
- CO₂ Systems



FIRE ALARM AND LIFE SAFETY

Our code-compliant fire alarm systems with specialty detection utilize high quality equipment from industry-leading manufacturers. We have extensive experience in projects from small commercial buildings, to large high-rise facilities, to sprawling industrial complexes. Our NICET certified sales team, designers, project managers, and technicians strive to exceed our client expectations.



- Addressable, Conventional, and Networked Fire Alarm Systems
- Voice Evacuation
- Linear Heat Detection
- Air Sampling
- Pre-action Sprinkler Detection & Control



EMERGENCY POWER SHUTDOWN MANAGEMENT SYSTEM (EPSMS)

Fike's Emergency Power Shutdown Management System (EPSMS) is designed to consolidate and control equipment emergency power off in a timely, efficient and coordinated manner. EPSMS is used in many applications to:

- De-energize equipment during a fire
- Close fire dampers and turn off HVAC to contain fire and maintain proper concentration of fire suppressant
- Safely shutdown equipment during a flood or sprinkler system discharge
- Help protect fire department personnel from electrocution when fighting a fire



Call today for your life safety evaluation.



FACILITIES PROTECTION SYSTEMS

714-257-2244
www.fpsys.com

INTELLI
TECH

925-484-3701
www.gotoitsi.com

PRESIDENT: continued from page 1

Also in June, we held the ASPE Board of Directors election (thank you for trusting me to serve as your President).

In September, we enjoyed the ASPE LA Annual Family Picnic.

October marked a special occasion as we celebrated ASPE LA's 60th Anniversary Gala with an exceptional and festive party.

The ASPE LA delegation actively participated and led discussions at the ASPE 2024 Convention in October.

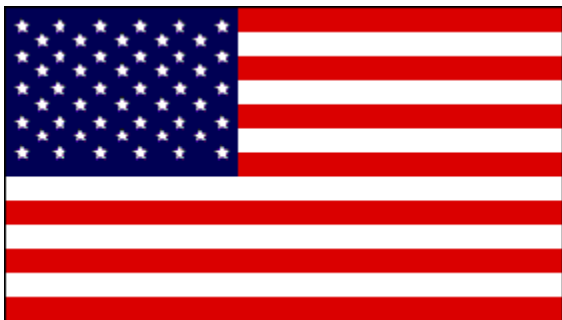
In November, we supported WOA and YAP by organizing a successful Clay Shooting event.

After months of effort, we upgraded the ASPE LA website, giving it a modern and user-friendly interface.

And last but not least, we're planning to celebrate the 2024 Holiday Party on January 18, 2025.

Website Update

I'm happy to report that the website transfer is now complete—our updated site, ASPELA.com, is live! Feel free to explore it and share your comments or recommendations with any BOD officer.



Please note that all newsletters, announcements, and communications will come from postmaster@mg.aspela.com, a legitimate ASPE LA email address. If you or anyone you know isn't receiving ASPE LA communications, please inform the Board. We'll ensure that all email addresses are added or updated in our distribution list.

To our affiliates: we need your help spreading the word. As you visit engineering offices, please check if our partners are receiving ASPE LA communications. I was surprised to learn that no one at ARC Engineering was receiving our newsletters.

Special Thanks

I want to extend my heartfelt thanks to the 2024 ASPE Convention LA delegates. Your unity, support, and understanding have made our efforts much more effective in fulfilling our commitment to the Society and its members. The LA Chapter is truly represented by individuals dedicated to the prosperity of the Society.

Upcoming Holiday Party

The ASPE LA Holiday Party is just around the corner—please see the separate flyer for details. Make sure to reserve your seat for yourself and your significant other!

Wishing you all a safe, healthy, and happy holiday season.

Be well and stay well.

1450 Railroad Street
Corona, Ca 92882



WWW.RENCOSALES.COM

Phone: 951-371-8848

Fax: 951-371-3635

ADVANCED AQUADUCK SYSTEMS
Rectangular under walk drainage pipe and fittings waterheater pans and duck-pullers
WWW.AQUADUCKSYSTEMS.COM

Bradley
Thermostatic mixing valves, Keltech Safety Heaters, Washfountains, Emergency Equipment, Showers, Lavatories, Patient Care, Anti Lig
WWW.BRADLEYCORP.COM

Bradley Div 10
Bathroom Accessories, Partitions Baked Enamel, Phenolic, Euro, Bradmar Plastic, Stainless Steel, Plastic Lockers, Benches and Cubbies
WWW.BRADLEYCORP.COM

CHICAGO FAUCETS
Commercial, industrial, institutional, food service, electronic, laboratory, & light commercial faucets
WWW.CHICAGOFAUCETS.COM

Gastite
Flexible gas corrugated stainless steel tubing, fittings, & accessories
WWW.GASTITE.COM

Global Flex Mfg.
Seismic, Stainless steel, bronze & teflon hose assemblies in size ranging from 1/4" to 12" diameter
WWW.GLOBALFLEXMFG.COM

JOSAM
Commercial drainage products, stainless steel Push-Fit pipe & fittings, trench drains, stainless steel drains
WWW.JOSAM.COM

MATCO NORCA
Supplier of globally sourced, code-compliant plumbing & PVF products for use in residential, commercial, & industrial
WWW.MATCO-NORCA.COM

McGUIRE
Plumbing specialty in cast brass p-traps, sink & lavatory drain strainers, Pro Wrap ADA, & heavy supply stops
WWW.MCGUIREMFG.COM

OASIS
Since 1910 Water delivery system, Quasar, bottle filler, drinking fountain, retrofit for competing fillers, outdoor wall mount
WWW.OASISCOOLER.COM

SCRANTON PRODUCTS
HDPE bathroom partitions, lockers, shower stalls, dressing compartments, & vanities
WWW.SCRANTONPRODUCTS.COM

STERN-WILLIAMS
Terrazzo mop sinks, shower pans, & outdoor fountains
WWW.STERNWILLIAMS.COM

STRIEM
Oil separators, solid interceptors, chemical waste, & storage tanks
WWW.STRIEMCO.COM

Products include EVO Pex Fittings, Sharkbite Pex, HydroFlame, TestRite, TMV and Pro Lock

HR HoldRite™

WWW.RWC.COM

SharkBite™ **CashAcme™** **John Guest®**

WOODFORD
Commercial/Residential wall, roof, & yard hydrants for warm and freezing climates
WWW.WOODFORDMFG.COM

ISIMET
Laboratory service panels, utility controllers & solenoids
WWW.ISIMET.COM

MAPA PRODUCTS
Adjustable nylon based roof supports, Mechanical supports, and trapeze
WWW.MAPAPRODUCTS.COM

WATCO
Complete line of bath wastes, tub trim kits & lavatory drain accessories
WWW.WATCOMFG.COM

Rinnai® REHP SERIES™ Electric Heat Pump Water Heater

Technology and Comfort Combined

Rinnai now offers one of the most efficient and sustainable residential water heating solutions available, the Rinnai Electric Heat Pump Water Heater (REHP). The REHP delivers consistent hot water by extracting heat from the surrounding air and converting it to hot water while producing zero emissions.

When you install the REHP in your home, you are assured of meeting the highest efficiency standards and reduced energy usage and costs.

Product Highlights

Efficiency

- Energy Star® 5.0
- UEF of 3.75/50 GL and 4.0/80 GL
- Meets the highest level of Builder efficiency standards
 - Only Builder model with CTA-2045
 - Title 24 Compliant
- Meets the highest level of federal and state rebate requirements
 - IRA (45L) tax credit eligible
- NEEA Tier 4
- High Cool Climate Efficiency (CCE)

Performance

- Designed with variable speed fan for whisper quiet operation
- Wide Operating Range as low as 37°F - 109°F
- Designed with a Micro Channel Heat Exchanger Condenser to optimize the heat transfer and enhance energy savings for best in class recovery rate
- 4.5 KW back up elements for extra comfort
- Demand-Response Enabled- Save money by reducing energy usage during peak demand






Installation and Serviceability

- Zero Clearance- Gain back net living space with less install footprint for flexible installation
- Installs as easily as an electric water heater
- Easy troubleshooting and serviceability
- Duct ready to install in tight spaces



5 Operating Modes to meet any hot water demand



Part #	Included Accessories	
107000677	T&P Valve	
107000674	Drainage Pipe	
107000678	Drain Valve	
Part #	Optional Accessories	
103000120	EHPWH Ducting Kit	
103000119	EHPWH Leak Sensor Valve	

Rinnai® Learn more at rinnai.us

rinnai.us | rinnai.ca

Rinnai America Corporation | 103 International Drive | Peachtree City, Georgia 30269 | rinnai.us | rinnai.ca | 1-800-621-9419



PROUD SPONSOR



Official Water Heater of Stewart-Haas Racing and Tony Stewart Racing

2024166

Copyright 2024 Rinnai America Corporation. All rights reserved. Rinnai® and Creating a healthier way of living® are registered trademarks of Rinnai Corporation used under license by Rinnai America Corporation. Rinnai Electric Heat Pump Water Heater™ and Easy Digital Matters™ are the trademarks of Rinnai America Corporation. Rinnai America Corporation continually updates materials, and as such, content is subject to change without notice.

2/2024

ASPELA TIMES



Published by American Society of Plumbing Engineers, Los Angeles Chapter
www.aspela.com • news.aspela@gmail.com

Over Fifty years of Dedication to the Health and safety of the Southern California Community
A non-profit corporation Local chapters do not speak for the society.

Los Angeles Chapter American Society of Plumbing Engineers Officers - Board of Directors



President
VAHAN MARGARYAN, CPD, GPD
ARUP
(310) 422-7425
vahan.margaryan@arup.com



Corresponding Secretary
CASEY WISE
Renco Sales, Inc.
(951)532-6109
caseyw@rencosales.com



Editor
MATT FARRELL
Renco Sales, Inc.
(951)339-0153
news.aspela@gmail.com



Vice President Technical
THURA ZIN CPD, GPD
ARUP
(310) 650-7734
thurazin53@gmail.com



Treasurer
EDGAR OCHOA
Southcoast Engineering Group
(818) 224-2700
eochoa@scegroup.com



Women of ASPE Region 4 Liaison
LINDA DEUNAY
Enviro Products West
(818) 687-6910
linda@epwest.com



Vice President Legislative
AMIR TABAKH
LADWP
amir.tabakh@ladwp.com



Administrative Secretary
JEFF ATLAS
Rinnais
(661) 478-4565
aspenews@gmail.com



Chapter Affiliate Liaison:
GUILLERMO NEGRON
Lixil
guillermo.negron@lixil.com



Vice President Membership
GABRIEL STARKMAN
DeltaQ
gabriel@deltaqinc.com



Chairman Board of Governors
COREY NAKANISHI
PBS Engineers, Inc.
cnakanishi@pbsengineers.com

